

Datasheet for 200-406-139

Trypsin Antibody Biotin Conjugated

Overview

Description:	Anti-Trypsin (RABBIT) Antibody Biotin Conjugated (BULK ORDER) - 200-406-139
Item No.:	200-406-139
Size:	10 mg
Applications:	ELISA, WB
Reactivity:	Bovine
Host Species:	Rabbit

Product Details

Background:	Anti-Trypsin Antibody detects trypsin. Trypsin is a serine protease found in the digestive system of many vertebrates, where it hydrolyses proteins. It belongs to the peptidase S1 family. Trypsin is produced in the pancreas as the inactive proenzyme trypsinogen. It cleaves peptides on the C-terminal side of lysine and arginine amino acid residues. Trypsin hydrolyzes ester and amide linkages of several synthetic substrates. Anti-Trypsin Antibody is ideal for investigators involved in Cell Signaling, Neuroscience, Signal Transduction and Biochemistry research.
Synonyms:	rabbit anti-trypsin antibody biotin conjugation, biotin conjugated rabbit anti-trypsin antibody, Anionic trypsinogen antibody, Beta trypsin antibody, Brain trypsinogen antibody, Cationic Trypsinogen antibody, Digestive Zymogen antibody, Mesotrypsin antibody, Mesotrypsinogen antibody
Host Species:	Rabbit
Conjugate:	Biotin
Clonality:	Polyclonal
Format:	IgG

Target Details

Gene Name:	TRBOTR
Reactivity:	Bovine
Immunogen Type:	Native Protein

Immunogen:	Anti-Trypsin Antibody was produced by repeated immunizations with bovine pancreatic trypsin protein purified.
Purity/Specificity:	Trypsin Antibody is an IgG fraction purified from monospecific antiserum by a multi-step process which includes delipidation, salt fractionation and ion exchange chromatography followed by extensive dialysis against the buffer stated above. Assay by immunoelectrophoresis resulted in a single precipitin arc against anti-Biotin, anti-Rabbit Serum as well as purified and partially purified Trypsin [Bovine Pancreas]. Cross reactivity against Trypsin from other sources may occur but has not been specifically determined.
Relevant Links:	<ul style="list-style-type: none">• UniProtKB - P00760• NCBI - CAA38513.1• GenelD - 780933

Application Details

Tested Applications:	ELISA, WB
Application Note:	Anti-Trypsin Biotin Antibody has been tested by ELISA and western blot. Researchers should determine optimal titers for applications that are not stated below.
Assay Dilutions:	All assays should be optimized by the user. Recommended dilutions (if any) may be listed below.
ELISA:	1:5,000 - 1:25,000
WB:	1:500 - 1:3,000

Formulation

Physical State:	Lyophilized
Buffer:	0.02 M Potassium Phosphate, 0.15 M Sodium Chloride, pH 7.2
Preservative:	0.01% (w/v) Sodium Azide
Stabilizer:	10 mg/mL Bovine Serum Albumin (BSA) - Immunoglobulin and Protease free
Reconstitution Volume:	1.0 mL
Reconstitution Buffer:	Restore with deionized water (or equivalent)

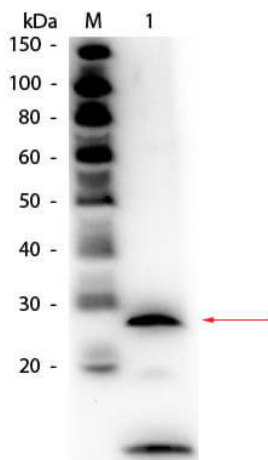
Shipping & Handling

Shipping Condition:	Ambient
----------------------------	---------

Storage Condition: Store vial at 4° C prior to restoration. For extended storage aliquot contents and freeze at -20° C or below. Avoid cycles of freezing and thawing. Centrifuge product if not completely clear after standing at room temperature. This product is stable for several weeks at 4° C as an undiluted liquid. Dilute only prior to immediate use.

Expiration: Expiration date is one (1) year from date of receipt.

Images



Western Blot

Western Blot of Rabbit anti-Trypsin Antibody Biotin Conjugated. Lane 1: Trypsin. Load: 50 ng per lane. Primary antibody: Rabbit anti-Trypsin Antibody Biotin Conjugated at 1:1,000 overnight at 4°C. Secondary antibody: HRP streptavidin secondary antibody at 1:40,000 for 30 min at RT. Block: MB-070 for 30 minutes at RT. Predicted/Observed size: 26 kDa, 26 kDa for Trypsin. Other band(s): autocatalytic fragment of Trypsin, ~10 kDa.

Disclaimer

This product is for research use only and is not intended for therapeutic or diagnostic applications. Please contact a technical service representative for more information. All products of animal origin manufactured by Rockland Immunochemicals are derived from starting materials of North American origin. Collection was performed in United States Department of Agriculture (USDA) inspected facilities and all materials have been inspected and certified to be free of disease and suitable for exportation. All properties listed are typical characteristics and are not specifications. All suggestions and data are offered in good faith but without guarantee as conditions and methods of use of our products are beyond our control. All claims must be made within 30 days following the date of delivery. The prospective user must determine the suitability of our materials before adopting them on a commercial scale. Suggested uses of our products are not recommendations to use our products in violation of any patent or as a license under any patent of Rockland Immunochemicals, Inc. If you require a commercial license to use this material and do not have one, then return this material, unopened to: Rockland Inc., P.O. BOX 5199, Limerick, Pennsylvania, USA.