

Datasheet for 200-403-089S

## Dextranase Antibody Peroxidase Conjugated

### Overview

<b>Description:</b>	Anti-Dextranase (Penicillium species) (RABBIT) Antibody Peroxidase Conjugated - 200-403-089S
<b>Item No.:</b>	200-403-089S
<b>Size:</b>	25 µL
<b>Applications:</b>	ELISA, WB
<b>Reactivity:</b>	Penicillium
<b>Host Species:</b>	Rabbit

### Product Details

<b>Background:</b>	Dextranase belongs to the glycosyl hydrolase 49 family. It's catalytic reaction is endohydrolysis of (1->6)-alpha-D-glucosidic linkages in dextran.
<b>Synonyms:</b>	rabbit anti-Dextranase Antibody Peroxidase Conjugation, HRP Conjugated rabbit anti-Dextranase Antibody, dextranase, Alpha-1,6-glucan-6-glucanohydrolase, DEX
<b>Host Species:</b>	Rabbit
<b>Conjugate:</b>	Peroxidase (HRP)
<b>Clonality:</b>	Polyclonal
<b>Format:</b>	IgG

### Target Details

<b>Gene Name:</b>	DEX
<b>Reactivity:</b>	Penicillium
<b>Immunogen Type:</b>	Native Protein
<b>Immunogen:</b>	Dextranase [Penicillium species]

**Purity/Specificity:** Dextranase is an IgG fraction antibody purified from monospecific antiserum by a multi-step process which includes delipidation, salt fractionation and ion exchange chromatography followed by extensive dialysis against the buffer stated above. Assay by immunoelectrophoresis resulted in a single precipitin arc against anti-Peroxidase, anti-Rabbit Serum as well as purified and partially purified Dextranase [Penicillium species]. Cross reactivity against Dextranase from other sources is unknown.

**Relevant Links:**

- [UniProtKB - P48845](#)
- [NCBI - AAB47720.1](#)

## Application Details

**Tested Applications:** ELISA, WB

**Application Note:** Anti-Dextranase Peroxidase has been tested by ELISA and western blot and assayed against 1.0 ug of Dextranase [Penicillium species] in a standard capture ELISA using ABTS (2,2'-azino-bis-[3-ethylbenzothiazoline-6-sulfonic acid]) code # ABTS-100 as a substrate for 30 minutes at room temperature. A working dilution of 1:1,000 to 1:3,000 of the reconstitution concentration is suggested for this product.

**Assay Dilutions:** All assays should be optimized by the user. Recommended dilutions (if any) may be listed below.

**ELISA:** 1:2,000 - 1:10,000

**IP:** User Optimized

**WB:** 1:500 - 1:5,000

## Formulation

**Physical State:** Liquid (sterile filtered)

**Concentration:** 1.0 mg/mL by UV absorbance at 280 nm

**Buffer:** 0.02 M Potassium Phosphate, 0.15 M Sodium Chloride, pH 7.2

**Preservative:** 0.01% (w/v) Gentamicin Sulfate. Do NOT add Sodium Azide!

**Stabilizer:** 10 mg/mL Bovine Serum Albumin (BSA) - Immunoglobulin and Protease free

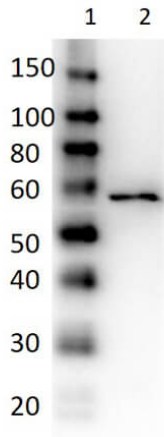
## Shipping & Handling

**Shipping Condition:** Dry Ice

**Storage Condition:** Store vial at -20° C or below prior to opening. This vial contains a relatively low volume of reagent (25 µL). To minimize loss of volume dilute 1:10 by adding 225 µL of the buffer stated above directly to the vial. Recap, mix thoroughly and briefly centrifuge to collect the volume at the bottom of the vial. Use this intermediate dilution when calculating final dilutions as recommended below. Store the vial at -20°C or below after dilution. Avoid cycles of freezing and thawing.

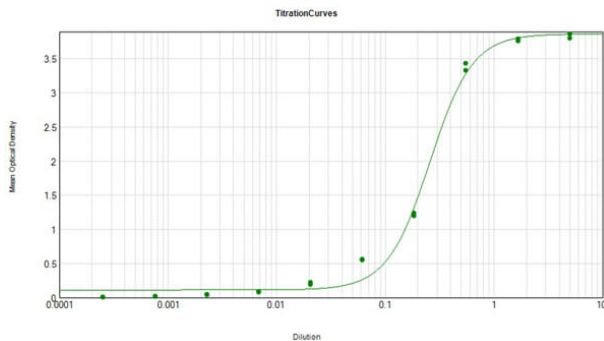
**Expiration:** Expiration date is one (1) year from date of receipt.

## Images



### Western Blot

Western Blot of Rabbit Anti-Dextranase Antibody Peroxidase Conjugated. Lane 1: Opal Prestained Molecular Weight Marker (p/n MB-210-0500). Lane 2: Dextranase. Primary Antibody: Rabbit Anti-Dextranase at 1:1000 overnight at 2-8°C. Secondary Antibody: none. Block: MB-070. Expect MW: ~66kDa.



### ELISA

ELISA Results of Rabbit Anti-Dextranase Antibody Peroxidase Conjugate tested against purified Dextranase. Each well was coated in duplicate with 1.0 µg of Dextranase. The starting dilution of antibody was 5µg/ml and the X-axis represents the Log10 of a 3-fold dilution. This titration is a 4-parameter curve fit where the IC50 is defined as the titer of the antibody. Assay performed using HRP Conjugate Stabilizer (p/n MB-076) and TMB substrate (p/n TMBE-1000).

## Disclaimer

This product is for research use only and is not intended for therapeutic or diagnostic applications. Please contact a technical service representative for more information. All products of animal origin manufactured by Rockland Immunochemicals are derived from starting materials of North American origin. Collection was performed in United States Department of Agriculture (USDA) inspected facilities and all materials have been inspected and certified to be free of disease and suitable for exportation. All properties listed are typical characteristics and are not specifications. All suggestions and data are offered in good faith but without guarantee as conditions and methods of use of our products are beyond our control. All claims must be made within 30 days following the date of delivery. The prospective user must determine the suitability of our materials before adopting them on a commercial scale. Suggested uses of our products are not recommendations to use our products in violation of any patent or as a license under any patent of Rockland Immunochemicals, Inc. If you require a commercial license to use this material and do not have one, then return this material, unopened to: Rockland Inc., P.O. BOX 5199, Limerick, Pennsylvania, USA.