

Datasheet for 200-402-138

Protein G Antibody Fluorescein Conjugated**Overview**

Description:	Anti-Protein G (RABBIT) Antibody Fluorescein Conjugated - 200-402-138
Item No.:	200-402-138
Size:	20 mg
Applications:	Dot Blot
Reactivity:	Protein G
Host Species:	Rabbit

Product Details

Background:	Protein G is a protein that has the property of binding to immunoglobulins. It is a 65-kDa cell surface protein that is commonly used for purifying antibodies through binding to the Fab and Fc regions. Protein G was originally isolated from Streptococcal bacteria. It is similar in properties to Protein A but has unique IgG binding specificities. Native protein G also binds albumin, however Rockland uses recombinant forms of Protein G that only bind to immunoglobulins.
Synonyms:	rabbit anti-Protein G Antibody FITC Conjugation, Fluorescein conjugated rabbit anti-Protein G Antibody, Protein G FITC
Host Species:	Rabbit
Conjugate:	Fluorescein (FITC)
Clonality:	Polyclonal
Format:	IgG
F/P Ratio:	4.5

Target Details

Reactivity:	Protein G
Immunogen Type:	Native Protein
Immunogen:	Protein G (Streptococcus species)

Purity/Specificity: This product is an IgG fraction antibody purified from monospecific antiserum by a multi-step process which includes delipidation, salt fractionation and ion exchange chromatography followed by extensive dialysis against the buffer stated above. Assay by immunoelectrophoresis resulted in a single precipitin arc against anti-fluorescein, anti-Rabbit Serum and Protein G.

Application Details

Tested Applications: Dot Blot

Application Note: FITC Conjugated Anti-Protein G antibody has been tested by dot blot and is designed for immunofluorescence microscopy, fluorescence based plate assays (FLISA) and fluorescent western blotting. This product is also suitable for multiplex analysis, including multicolor imaging, utilizing various commercial platforms.

Assay Dilutions: All assays should be optimized by the user. Recommended dilutions (if any) may be listed below.

FC: User Optimized

FLISA: User Optimized

IF: 1:500 - 1:2,500

WB: User Optimized

Formulation

Physical State: Lyophilized

Concentration: 10.0 mg/mL by UV absorbance at 280 nm

Buffer: 0.02 M Potassium Phosphate, 0.15 M Sodium Chloride, pH 7.2

Preservative: 0.01% (w/v) Thimerosal

Stabilizer: 10 mg/mL Bovine Serum Albumin (BSA) - Immunoglobulin and Protease free

Reconstitution Volume: 2.0 mL

Reconstitution Buffer: Restore with deionized water (or equivalent)

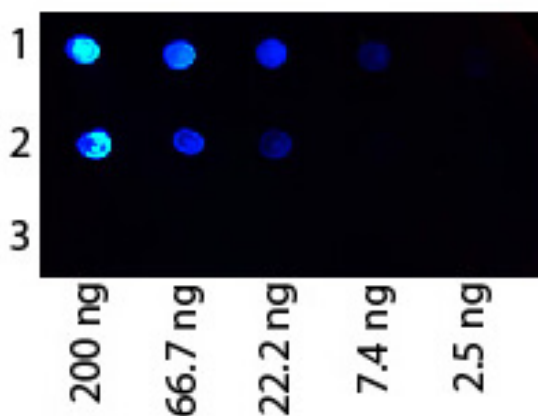
Shipping & Handling

Shipping Condition: Ambient

Storage Condition: Store Protein G conjugated antibody at 4° C prior to restoration. For extended storage aliquot contents and freeze at -20° C or below. Avoid cycles of freezing and thawing. Centrifuge product if not completely clear after standing at room temperature. This product is stable for several weeks at 4° C as an undiluted liquid. Dilute only prior to immediate use.

Expiration: Expiration date is one (1) year from date of receipt.

Images



Dot Blot

Dot Blot of Protein G Antibody Fluorescein Conjugated.
Antigen 1: Human IgG. Antigen 2: Rat IgG. Antigen 3: Dog IgG. Load: Starting dot is 200 ng followed by a 3-fold serial dilution. Primary antibody: Protein G at 1:1000 for 60 min RT. Secondary antibody: Fluorescein rabbit anti-Protein G at 1:1,000 for 30 min at RT. Block: MB-070 for 30 min at RT.

Disclaimer

This product is for research use only and is not intended for therapeutic or diagnostic applications. Please contact a technical service representative for more information. All products of animal origin manufactured by Rockland Immunochemicals are derived from starting materials of North American origin. Collection was performed in United States Department of Agriculture (USDA) inspected facilities and all materials have been inspected and certified to be free of disease and suitable for exportation. All properties listed are typical characteristics and are not specifications. All suggestions and data are offered in good faith but without guarantee as conditions and methods of use of our products are beyond our control. All claims must be made within 30 days following the date of delivery. The prospective user must determine the suitability of our materials before adopting them on a commercial scale. Suggested uses of our products are not recommendations to use our products in violation of any patent or as a license under any patent of Rockland Immunochemicals, Inc. If you require a commercial license to use this material and do not have one, then return this material, unopened to: Rockland Inc., P.O. BOX 5199, Limerick, Pennsylvania, USA.