

**Datasheet for 200-401-Z50****BCL-xL Antibody****Overview**

<b>Description:</b>	Anti-BCL-xL (RABBIT) Antibody - 200-401-Z50
<b>Item No.:</b>	200-401-Z50
<b>Size:</b>	100 µg
<b>Applications:</b>	ELISA, WB
<b>Reactivity:</b>	Human
<b>Host Species:</b>	Rabbit

**Product Details**

<b>Background:</b>	Apoptosis plays a major role in normal organism development, tissue homeostasis, and removal of damaged cells. Disruption of this process has been implicated in a variety of diseases such as cancer. Bcl-xL is a member of the Bcl-2 family of proteins that are critical regulators of apoptosis. These can be divided into two classes: those that inhibit apoptosis and those that promote cell death. Bcl-xL is an anti-apoptotic mitochondrial protein related to Bcl-w and the major transcript of the bcl-x gene. Its high expression in tumors is correlated with advanced disease and poor prognosis. Bcl-xL expression level increases in response to several stimuli such as ionizing radiation and treatment with chemotherapeutic agents.
<b>Synonyms:</b>	Bcl-xL Antibody, BCLX, BCL2L, BCLXL, BCLXS, Bcl-X, bcl-xL, bcl-xS, PPP1R52, BCL-XL/S, BCLX, Bcl-2-like protein 1, Apoptosis regulator Bcl-X, Bcl2-L-1
<b>Host Species:</b>	Rabbit
<b>Clonality:</b>	Polyclonal
<b>Format:</b>	IgG

**Target Details**

<b>Gene Name:</b>	BCL2L1
<b>Reactivity:</b>	Human
<b>Immunogen Type:</b>	Conjugated Peptide

<b>Immunogen:</b>	Anti-Bcl-xL antibody was prepared from whole rabbit serum produced by repeated immunizations with a peptide corresponding to 14 amino acids near the C-terminus of human Bcl-xL.
<b>Purity/Specificity:</b>	Anti-Bcl-xL Antibody is supplied as ion exchange chromatography purified IgG. Cross reactivity with Bcl-xL from other sources has not been determined.
<b>Relevant Links:</b>	<ul style="list-style-type: none"><li>• <a href="#">UniProtKB - Q07817</a></li><li>• <a href="#">GeneID - 598</a></li><li>• <a href="#">NCBI - CAA80661</a></li></ul>

## Application Details

<b>Tested Applications:</b>	ELISA, WB
<b>Application Note:</b>	Anti-Bcl-xL Antibody has been tested for use in ELISA and Western Blotting. Specific conditions for reactivity should be optimized by the end user. Expect a band at approximately 26 kDa in Western Blots of specific cell lysates and tissues.
<b>Assay Dilutions:</b>	All assays should be optimized by the user. Recommended dilutions (if any) may be listed below.
<b>ELISA:</b>	1:10,000 - 1:20,000
<b>WB:</b>	1 - 2 µg/mL

## Formulation

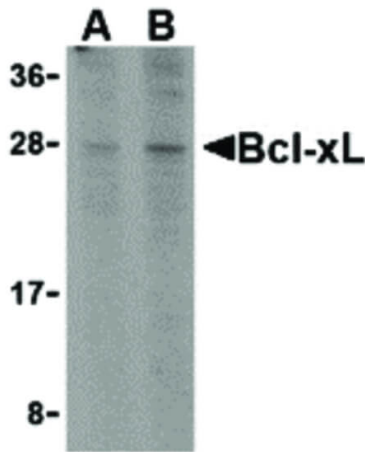
<b>Physical State:</b>	Liquid (sterile filtered)
<b>Concentration:</b>	1 mg/mL by UV absorbance at 280 nm
<b>Buffer:</b>	0.01 M Sodium Phosphate, 0.25 M Sodium Chloride, pH 7.2
<b>Preservative:</b>	0.02% (w/v) Sodium Azide
<b>Stabilizer:</b>	None

## Shipping & Handling

<b>Shipping Condition:</b>	Dry Ice
<b>Storage Condition:</b>	Store vial at -20° C prior to opening. Aliquot contents and freeze at -20° C or below for extended storage. Avoid cycles of freezing and thawing. Centrifuge product if not completely clear after standing at room temperature. This product is stable for several weeks at 4° C as an undiluted liquid. Dilute only prior to immediate use.

**Expiration:** Expiration date is one (1) year from date of receipt.

## Images



### Western Blot

Western Blot of Bcl-xL antibody in A549 cell lysates. Lane A: Bcl-xL antibody at 1  $\mu\text{g}/\text{mL}$ . Lane B: Bcl-xL antibody at 2  $\mu\text{g}/\text{mL}$ . Load: 35  $\mu\text{g}$  per lane. Primary antibody: Bcl-xL antibody at designated concentrations for overnight at 4°C. Secondary antibody: Peroxidase rabbit secondary antibody at 1:10,000 for 45 min at RT. Block: 5% BLOTTO overnight at 4°C. Predicted/Observed size: 26 kDa, 28 kDa for Bcl-xL. Other band(s): Bcl-xL splice variants and isoforms.

## Disclaimer

This product is for research use only and is not intended for therapeutic or diagnostic applications. Please contact a technical service representative for more information. All products of animal origin manufactured by Rockland Immunochemicals are derived from starting materials of North American origin. Collection was performed in United States Department of Agriculture (USDA) inspected facilities and all materials have been inspected and certified to be free of disease and suitable for exportation. All properties listed are typical characteristics and are not specifications. All suggestions and data are offered in good faith but without guarantee as conditions and methods of use of our products are beyond our control. All claims must be made within 30 days following the date of delivery. The prospective user must determine the suitability of our materials before adopting them on a commercial scale. Suggested uses of our products are not recommendations to use our products in violation of any patent or as a license under any patent of Rockland Immunochemicals, Inc. If you require a commercial license to use this material and do not have one, then return this material, unopened to: Rockland Inc., P.O. BOX 5199, Limerick, Pennsylvania, USA.