

Datasheet for 200-401-W52**LSD1 Antibody****Overview**

Description:	Anti-LSD1 (RABBIT) Antibody - 200-401-W52
Item No.:	200-401-W52
Size:	50 µg
Applications:	ChIP, WB
Reactivity:	Human
Host Species:	Rabbit

Product Details

Background:	LSD1 (lysine specific demethylase 1) is a component of the histone demethylase complex that uses FAD as a prosthetic group. LSD1 may have a dual effect on gene transcription. As it demethylates the mono- and dimethylated 'Lys-4' of histone H3, which are associated with transcriptional activation, LSD1 can act as a repressor of gene expression. However, LSD1 is also capable of demethylating 'Lys-9' of histone H3, a specific tag for epigenetic transcriptional repression, thereby leading to activation of androgen receptor target genes. LSD1 therefore is ideal for research in different processes such as Stem and Cancer Cell Biology, Embryonic Development, Epigenetics and Cell Differentiation and Proliferation.
Synonyms:	Lysine-specific histone demethylase 1A, BRAF35-HDAC complex protein BHC110, Flavin-containing amine oxidase domain-containing protein 2, AOF2, KDM1
Host Species:	Rabbit
Clonality:	Polyclonal
Format:	IgG

Target Details

Gene Name:	KDM1A
Reactivity:	Human
Immunogen Type:	Recombinant Protein
Immunogen:	Anti-LSD1 Antibody was produced in rabbits by repeated immunizations with a full length recombinant protein of human LSD1.

Purity/Specificity: Anti-LSD1 Antibody was purified by Protein G chromatography. Cross reactivity with other species was not tested.

Relevant Links:

- [UniProtKB - O60341](#)
- [GeneID - 23028](#)
- [NCBI - NP_001009999.1](#)

Application Details

Tested Applications: ChIP, WB

Application Note: Anti-LSD1 Antibody is tested for Chromatin Immunoprecipitation and Western Blots. Specific conditions for reactivity should be optimized by the end user. Expect a band approximately 110 kDa in the appropriate cell lysate or extract.

Assay Dilutions: All assays should be optimized by the user. Recommended dilutions (if any) may be listed below.

ChIP: 3 µg per IP

WB: 1:1,000

Formulation

Physical State: Liquid (sterile filtered)

Concentration: 2.0 mg/ml by UV absorbance at 280 nm

Buffer: 0.01 M Sodium Phosphate, 0.25 M Sodium Chloride, pH 7.2

Preservative: 0.05% (w/v) Sodium Azide and 0.05% ProClin 300

Stabilizer: None

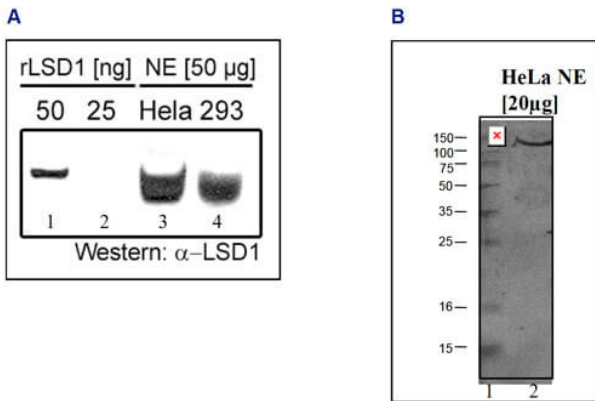
Shipping & Handling

Shipping Condition: Dry Ice

Storage Condition: Store vial at -20° C prior to opening. Aliquot contents and freeze at -20° C or below for extended storage. Avoid cycles of freezing and thawing. Centrifuge product if not completely clear after standing at room temperature. This product is stable for several weeks at 4° C as an undiluted liquid. Dilute only prior to immediate use.

Expiration: Expiration date is one (1) year from date of receipt.

Images



Western Blot

Western Blot results of Rabbit anti-LSD1 antibody. Lane 1: HeLa nuclear extracts cells. Load: 20 µg per lane. Primary antibody: LSD1 antibody at 1:1000 for overnight at 4°C. Secondary antibody: anti-rabbit HRP secondary antibody at 1:10,000 for 45 min at RT. Block: 5% BLOTTO/TBS-Tween.

Disclaimer

This product is for research use only and is not intended for therapeutic or diagnostic applications. Please contact a technical service representative for more information. All products of animal origin manufactured by Rockland Immunochemicals are derived from starting materials of North American origin. Collection was performed in United States Department of Agriculture (USDA) inspected facilities and all materials have been inspected and certified to be free of disease and suitable for exportation. All properties listed are typical characteristics and are not specifications. All suggestions and data are offered in good faith but without guarantee as conditions and methods of use of our products are beyond our control. All claims must be made within 30 days following the date of delivery. The prospective user must determine the suitability of our materials before adopting them on a commercial scale. Suggested uses of our products are not recommendations to use our products in violation of any patent or as a license under any patent of Rockland Immunochemicals, Inc. If you require a commercial license to use this material and do not have one, then return this material, unopened to: Rockland Inc., P.O. BOX 5199, Limerick, Pennsylvania, USA.