

Datasheet for 200-401-J06

LMW E.Coli Host Cell Protein Antibody

Overview

| | |
|----------------------|---|
| Description: | Anti-Low Molecular Weight E.Coli Protein Host Cell Protein (HCP) Antibody - 200-401-J06 |
| Item No.: | 200-401-J06 |
| Size: | 100 µg |
| Applications: | 2D-PAGE, ELISA, WB |
| Reactivity: | E. coli |
| Host Species: | Rabbit |

Product Details

| | |
|----------------------|--|
| Background: | Anti-LMW Host Cell Proteins Antibody recognizes low molecular weight protein fractions from E.coli. This antibody has been analyzed by 2D electrophoresis western blot to assure highest possible coverage of E.coli HCP. Host Cell Proteins are process-related impurities derived from a host cell expression system that may be present in trace amounts in a final drug substance. HCP Antibodies are used to detect impurities in biologically-based therapeutics. Detecting impurities often unseen by 1-D electrophoresis, a 2D electrophoresis western blot analysis delivers more complete insight into the immunocoverage of protein components of the host cell lysate. |
| Synonyms: | rabbit anti-E.Coli Host Cell Protein antibody, rabbit anti-HCP antibody, rabbit anti-Low molecular Weight E.Coli Host Cell Proteins Antibody, Anti-Host Cell Protein, Low molecular weight E.Coli HCP proteins antibody |
| Host Species: | Rabbit |
| Clonality: | Polyclonal |
| Format: | IgG |

Target Details

| | |
|------------------------|---|
| Reactivity: | E. coli |
| Immunogen Type: | Native Protein |
| Immunogen: | Anti-LMW E.Coli Host Cell Proteins Antibody was prepared by repeated immunizations with a mixture low molecular weight (LMW) proteins from E.Coli (BL21). |

Purity/Specificity: LMW Host Cell Protein A purified antibody is directed against low molecular weight E.coli Host Cell Proteins. The product was purified from monospecific antiserum by Protein A affinity chromatography.

Application Details

Tested Applications: 2D-PAGE, ELISA, WB

Application Note: Anti-LMW Host Cell Proteins Antibody detects over 270 E.coli LMW proteins and has been tested by 2D-Page, western blotting, and ELISA.

Assay Dilutions: All assays should be optimized by the user. Recommended dilutions (if any) may be listed below.

ELISA: 1:1000-1:2000

WB: 1:500-1:1000

Formulation

Physical State: Liquid (sterile filtered)

Concentration: 1.29 mg/mL by UV absorbance at 280 nm

Buffer: 0.02 M Potassium Phosphate, 0.15 M Sodium Chloride, pH 7.2

Preservative: 0.01% (w/v) Sodium Azide

Stabilizer: None

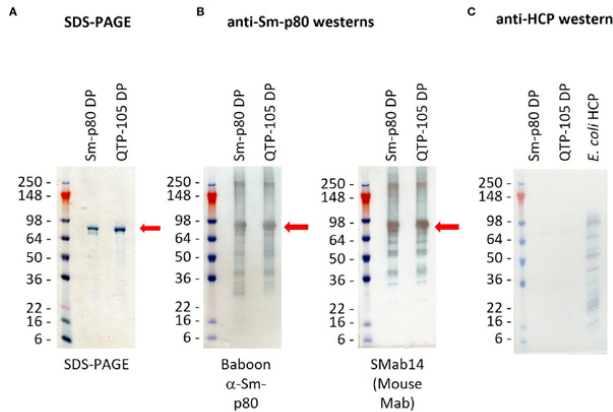
Shipping & Handling

Shipping Condition: Dry Ice

Storage Condition: Store vial at -20° C prior to opening. Aliquot contents and freeze at -20° C or below for extended storage. Avoid cycles of freezing and thawing. Centrifuge product if not completely clear after standing at room temperature. This product is stable for several weeks at 4° C as an undiluted liquid. Dilute only prior to immediate use.

Expiration: Expiration date is one (1) year from date of receipt.

Images

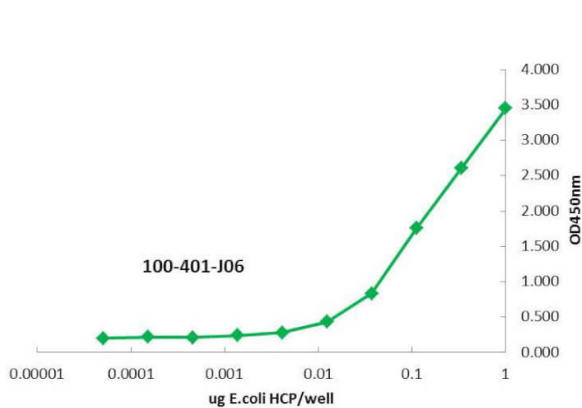
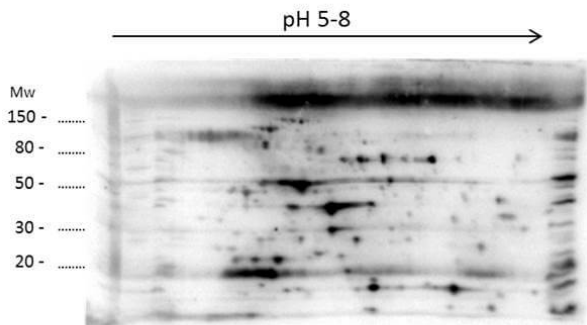


Western Blot

SDS-PAGE gel (A) and western blots (B, C) confirming identity and purity of Sm-p80 protein in Sm-p80 DP and QTP-105. Gels were transferred onto membranes before incubation with primary and secondary antibody dilutions according to methods. Sm-p80 protein was identified by use of immunized baboon sera and a monoclonal mouse antibody (SMab14) (B), and absence of E. coli host cell proteins was verified for purity (C). Sm-p80 bands are indicated with red arrows. Pictures were taken within 5 minutes of termination of TMB-HRP reaction. Fig 2. PMID: 39483645

Western Blot

2D Western Blot of anti-E.coli Low Molecular Weight Host Cell Protein antibody. Load: 35 μ g LMW HCP. Primary antibody: Rabbit anti-LMW-HCP antibody at 1:200 for overnight at 4°C. Secondary antibody: Goat anti-rabbit secondary antibody at 1:10,000 for 30 min at RT. Block: MB-070 for 1 hour at RT.



ELISA

ELISA of Rabbit anti-Low Molecular Weight Host Cell Protein antibody. Antigen: BSA conjugates of LMW HCP. Coating amount: 1 μ g per well titrated 1:3 in 1XPBS. Primary antibody: Anti-LMW-HCP antibody at 100 ng/well. Secondary antibody: Peroxidase rabbit secondary antibody at 1:10,000. Substrate: TMB (p/n TMBE-0100) for 30min.

Disclaimer

This product is for research use only and is not intended for therapeutic or diagnostic applications. Please contact a technical service representative for more information. All products of animal origin manufactured by Rockland Immunochemicals are derived from starting materials of North American origin. Collection was performed in United States Department of Agriculture (USDA) inspected facilities and all materials have been inspected and certified to be free of disease and suitable for exportation. All properties listed are typical characteristics and are not specifications. All suggestions and data are offered in good faith but without guarantee as conditions and methods of use of our products are beyond our control. All claims must be made within 30 days following the date of delivery. The prospective user must determine the suitability of our materials before adopting them on a commercial scale. Suggested uses of our products are not recommendations to use our products in violation of any patent or as a license under any patent of Rockland Immunochemicals, Inc. If you require a commercial license to use this material and do not have one, then return this material, unopened to: Rockland Inc., P.O. BOX 5199, Limerick, Pennsylvania, USA.