

Datasheet for 200-401-H75**EZH1 Antibody****Overview**

Description:	Anti-EZH1 (RABBIT) Antibody - 200-401-H75
Item No.:	200-401-H75
Size:	100 µg
Applications:	WB
Reactivity:	Human, Mouse
Host Species:	Rabbit

Product Details

Background:	Anti-EZH1 Antibody detects human EZH1. EZH1 is a human homolog of the Drosophila gene Enhancer of zeste E(z), a member of the polycomb group of transcriptional repressors. In mice, EZH1 is a regulator of homeotic gene expression implicated in the assembly of repressive protein complexes in chromatin. The strong sequence conservation between species suggests potential role for EZH1 in human development as a transcriptional regulator and as a component of protein complexes that stably maintain heterochromatin. Anti-EZH1 Antibody is ideal for investigators involved in chromatin, NFkappaB, and signaling research.
Synonyms:	KIAA0388, Histone-lysine N-methyltransferase EZH1, 2.1.1.43, ENX-2, Enhancer of zeste homolog 1
Host Species:	Rabbit
Clonality:	Polyclonal
Format:	IgG

Target Details

Gene Name:	EZH1
Reactivity:	Human, Mouse
Immunogen Type:	Conjugated Peptide
Immunogen:	EZH1 Antibody was produced from whole rabbit serum prepared by repeated immunizations at an amino acid sequence located internally within the human EZH1 protein.

Purity/Specificity: Anti-EZH1 Antibody was purified by Protein G chromatography. A BLAST analysis was used to suggest cross-reactivity with Anti-EZH1 from human and mouse based on 100% homology with the immunizing sequence. Cross-reactivity with Anti-EZH1 from other sources has not been determined.

Relevant Links:

- [UniProtKB - Q92800](#)
- [NCBI - NP_001982.2](#)
- [GeneID - 2145](#)

Application Details

Tested Applications: WB

Application Note: Anti-EZH1 Antibody is tested for use in WB. Expect a band approximately 85kDa on specific lysates. Specific conditions for reactivity should be optimized by the end user.

Assay Dilutions: All assays should be optimized by the user. Recommended dilutions (if any) may be listed below.

WB: 2-4 µg/mL

Formulation

Physical State: Liquid

Concentration: 1.0 mg/mL by UV absorbance at 280 nm

Buffer: 0.02 M Potassium Phosphate, 0.15 M Sodium Chloride, pH 7.2

Preservative: 0.05% (w/v) Sodium Azide

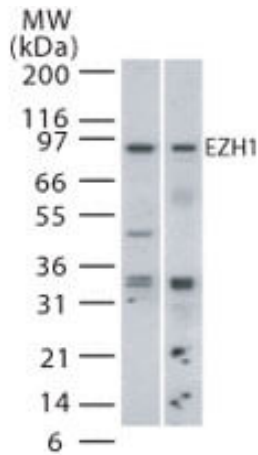
Shipping & Handling

Shipping Condition: Dry Ice

Storage Condition: Store vial at -20° C prior to opening. Aliquot contents and freeze at -20° C or below for extended storage. Avoid cycles of freezing and thawing. Centrifuge product if not completely clear after standing at room temperature. This product is stable for several weeks at 4° C as an undiluted liquid. Dilute only prior to immediate use.

Expiration: Expiration date is one (1) year from date of receipt.

Images

**Western Blot**

Western Blot of Rabbit Anti-EZH1 antibody. Lane 1: mouse. Lane 2: spleen lysate. Primary antibody: EZH1 at 2 µg/mL for overnight at 4°C. Secondary antibody: IRDye800™ rabbit secondary antibody at 1:10,000 for 45 min at RT. Block: 5% BLOTTO overnight at 4°C. Predicted/Observed size: 80 kDa for EZH1. Other band(s): none.

Disclaimer

This product is for research use only and is not intended for therapeutic or diagnostic applications. Please contact a technical service representative for more information. All products of animal origin manufactured by Rockland Immunochemicals are derived from starting materials of North American origin. Collection was performed in United States Department of Agriculture (USDA) inspected facilities and all materials have been inspected and certified to be free of disease and suitable for exportation. All properties listed are typical characteristics and are not specifications. All suggestions and data are offered in good faith but without guarantee as conditions and methods of use of our products are beyond our control. All claims must be made within 30 days following the date of delivery. The prospective user must determine the suitability of our materials before adopting them on a commercial scale. Suggested uses of our products are not recommendations to use our products in violation of any patent or as a license under any patent of Rockland Immunochemicals, Inc. If you require a commercial license to use this material and do not have one, then return this material, unopened to: Rockland Inc., P.O. BOX 5199, Limerick, Pennsylvania, USA.