

Datasheet for 200-401-G87**CCR5 Antibody****Overview**

Description:	Anti-CCR5 (RABBIT) Antibody - 200-401-G87
Item No.:	200-401-G87
Size:	100 µg
Applications:	ELISA, IF, IHC, WB
Reactivity:	Human
Host Species:	Rabbit

Product Details

Background: CCR5 antibody detects a G coupled -protein receptor. Human immunodeficiency virus (HIV) and related virus require coreceptors, in addition to CD4, to infect target cells. Some G protein-coupled receptors including CCR5, CXCR4, CCR3, CCR2b and CCR8 in the chemokine receptor family, and four new human molecules GPR15, STRL33, GPR1 and V28 were recently identified as HIV coreceptors. Among them, CCR5 (CC-CKR-5) is a principal coreceptor for macrophage- and dual-tropic HIV-1 strains fusion and entry of human white blood cells. CCR5 is required for the infection by HIV-1, HIV-2, and SIV. The beta-chemokines RANTES, MIP-alpha and MIP-beta are the ligands for CCR5 and prevent infection by M-tropic HIV-1. CXCR5 associates with the surface CD4-gp120 of HIV complex and leads to membrane fusion and virus entry of target cells. The amino-terminal domain and the extracellular loops of CCR5 serve as HIV binding sites. CCR5 messenger RNA is expressed in lymphoid organs and monocytes. Anti-CCR5 antibodies are ideal for investigators involved in Cytokines and Growth Factors and Infectious Disease research.

Synonyms:	CMKBR5, C-C chemokine receptor type 5, CHEMR13, HIV-1 fusion coreceptor, CD195
Host Species:	Rabbit
Clonality:	Polyclonal
Format:	IgG

Target Details

Gene Name:	CCR5
Reactivity:	Human

Immunogen Type:	Conjugated Peptide
Immunogen:	CCR5 Antibody was produced from whole rabbit serum prepared by repeated immunizations with a peptide corresponding to an internal region of human CCR5.
Purity/Specificity:	Anti-CCR5 Antibody is affinity chromatography purified via peptide column. A BLAST analysis was used to suggest cross-reactivity with CCR5 with Human based on 100% homology with the immunizing sequence. Cross-reactivity with CCR5 from other sources has not been determined.
Relevant Links:	<ul style="list-style-type: none">• NCBI - NP_000570.1• UniProtKB - P51681• GeneID - 1234

Application Details

Tested Applications:	ELISA, IF, IHC, WB
Application Note:	Anti-CCR5 Antibody is tested for use in E, WB, IF, and IHC. Expect a band approximately ~40.5 kDa on specific lysates. Western Blot, Immunohistochemistry, and Immunofluorescence tested in human samples. Specific conditions for reactivity should be optimized by the end user.
Assay Dilutions:	All assays should be optimized by the user. Recommended dilutions (if any) may be listed below.
IHC:	2.5µg/mL
WB:	1:1000-1:2000

Formulation

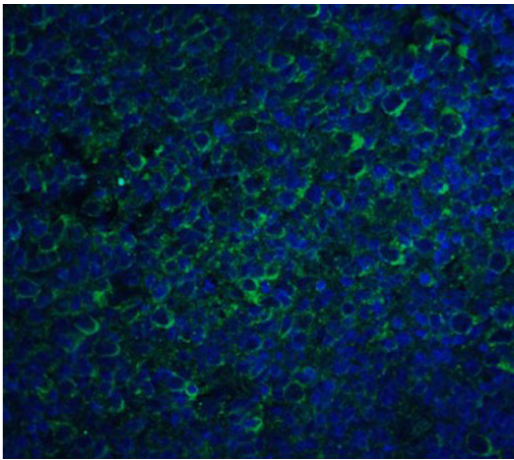
Physical State:	Liquid (sterile filtered)
Concentration:	1 mg/mL by UV absorbance at 280 nm
Buffer:	0.02 M Potassium Phosphate, 0.15 M Sodium Chloride, pH 7.2
Preservative:	0.02% (w/v) Sodium Azide
Stabilizer:	None

Shipping & Handling

Shipping Condition:	Dry Ice
----------------------------	---------

Storage Condition:	Store vial at -20° C prior to opening. Aliquot contents and freeze at -20° C or below for extended storage. Avoid cycles of freezing and thawing. Centrifuge product if not completely clear after standing at room temperature. This product is stable for several weeks at 4° C as an undiluted liquid. Dilute only prior to immediate use.
Expiration:	Expiration date is one (1) year from date of receipt.

Images



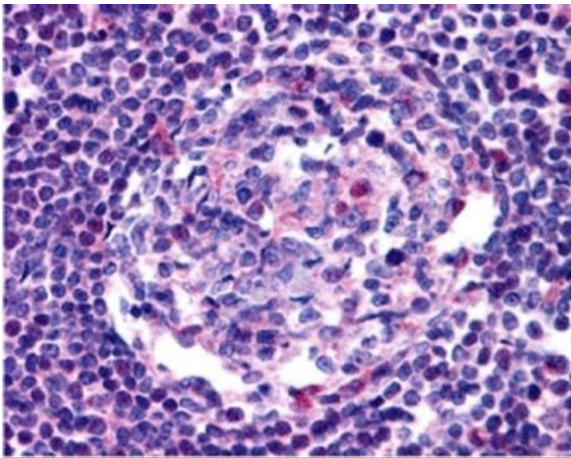
Immunofluorescence Microscopy

Immunofluorescence of CCR5.

Tissue: human lymph node tissue.

Primary: Anti-CCR5 antibody at 20 µg/mL.

Staining: CCR5 Antibody (Green), DAPI (Blue).

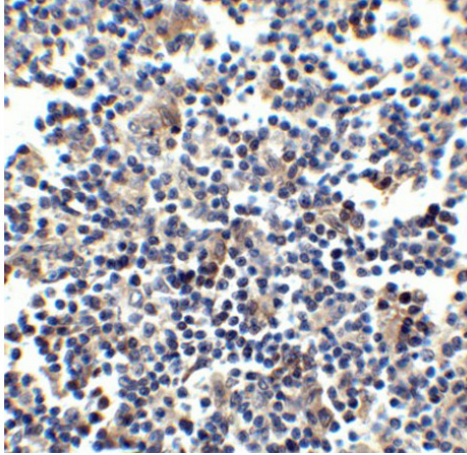


Immunohistochemistry

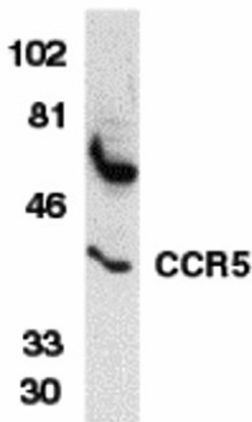
Immunohistochemistry of CCR5.

Tissue: human lymph node tissue.

Primary: Anti-CCR5 antibody at 20 µg/mL.

**Immunohistochemistry**

Immunohistochemistry of CCR5.
Tissue: human lymph node tissue.
Antibody: Anti-CCR5 antibody at 2.5 µg/ml.

**Western Blot**

Western blot analysis of CCR5.
Lysate: THP-1 whole cell.
Primary: Anti-CCR5 antibody at 1 µg/mL.

Disclaimer

This product is for research use only and is not intended for therapeutic or diagnostic applications. Please contact a technical service representative for more information. All products of animal origin manufactured by Rockland Immunochemicals are derived from starting materials of North American origin. Collection was performed in United States Department of Agriculture (USDA) inspected facilities and all materials have been inspected and certified to be free of disease and suitable for exportation. All properties listed are typical characteristics and are not specifications. All suggestions and data are offered in good faith but without guarantee as conditions and methods of use of our products are beyond our control. All claims must be made within 30 days following the date of delivery. The prospective user must determine the suitability of our materials before adopting them on a commercial scale. Suggested uses of our products are not recommendations to use our products in violation of any patent or as a license under any patent of Rockland Immunochemicals, Inc. If you require a commercial license to use this material and do not have one, then return this material, unopened to: Rockland Inc., P.O. BOX 5199, Limerick, Pennsylvania, USA.