

Datasheet for 200-401-FF9**TLR3 Antibody****Overview**

Description:	Anti-TLR3 (RABBIT) Antibody - 200-401-FF9
Item No.:	200-401-FF9
Size:	100 µg
Applications:	ELISA, IF, IHC, WB
Reactivity:	Human, Mouse
Host Species:	Rabbit

Product Details

Background:	Toll-like receptors (TLRs) are evolutionarily conserved pattern-recognition molecules resembling the toll proteins that mediate antimicrobial responses in <i>Drosophila</i> . These proteins recognize different microbial products during infection and serve as an important link between the innate and adaptive immune responses. The TLRs act through adaptor molecules such as MyD88 and TIRAP to activate various kinases and transcription factors so the organism can respond to potential infection. TLR3 is known to recognize viral double-stranded (ds) RNA, a molecular pattern associated with viral infection. Recently it has been shown to recognize viruses such as Influenza A and West Nile Virus and can mediate entry of at least West Nile Virus.
Synonyms:	TLR3 Antibody, CD283, IIAE2, Toll-like receptor 3
Host Species:	Rabbit
Clonality:	Polyclonal
Format:	IgG

Target Details

Gene Name:	TLR3
Reactivity:	Human, Mouse
Immunogen Type:	Conjugated Peptide
Immunogen:	Anti-TLR3 antibody was prepared from whole rabbit serum produced by repeated immunizations with a peptide corresponding to 15 amino acids near the N-terminus of human TLR3.

Purity/Specificity:	Anti-TLR3 Antibody is affinity chromatography purified via peptide column. Cross reactivity with TLR3 from other sources has not been determined.
Relevant Links:	<ul style="list-style-type: none">• UniProtKB - O15455• GeneID - 7098• NCBI - NP_003256.1

Application Details

Tested Applications:	ELISA, IF, IHC, WB
Application Note:	Anti-TLR3 Antibody has been tested for use in ELISA, Western Blotting, Immunocytochemistry and Immunofluorescence. Specific conditions for reactivity should be optimized by the end user. Expect a band at approximately 104 kDa in Western Blots of specific cell lysates and tissues.
Assay Dilutions:	All assays should be optimized by the user. Recommended dilutions (if any) may be listed below.
ELISA:	1:5000 - 1:20,000
IF:	2 µg/mL
WB:	0.5-2 µg/mL

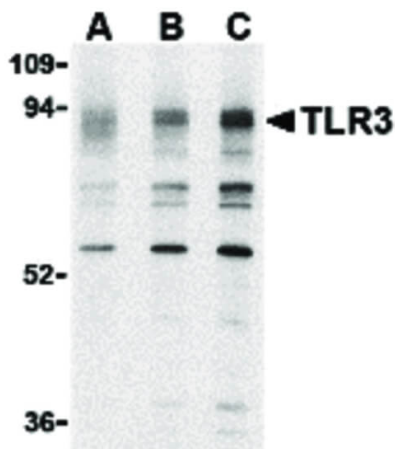
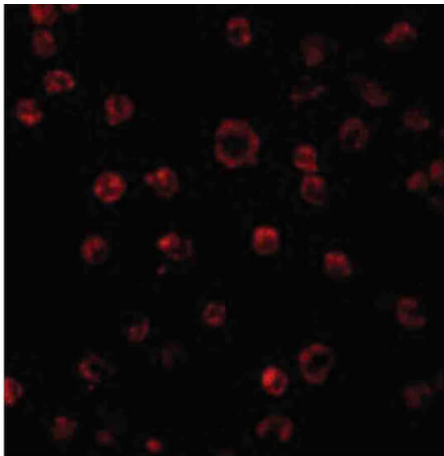
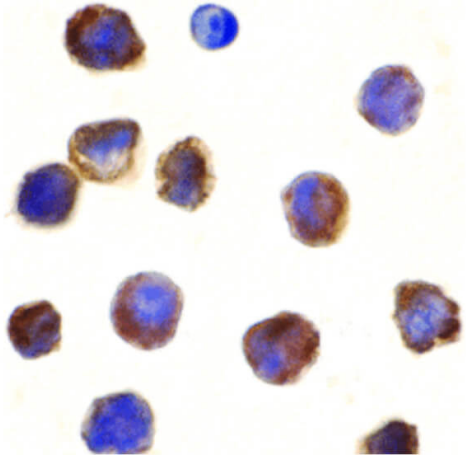
Formulation

Physical State:	Liquid (sterile filtered)
Concentration:	1 mg/mL by UV absorbance at 280 nm
Buffer:	0.01 M Sodium Phosphate, 0.25 M Sodium Chloride, pH 7.2
Preservative:	0.02% (w/v) Sodium Azide
Stabilizer:	None

Shipping & Handling

Shipping Condition:	Dry Ice
Storage Condition:	Store vial at -20° C prior to opening. Aliquot contents and freeze at -20° C or below for extended storage. Avoid cycles of freezing and thawing. Centrifuge product if not completely clear after standing at room temperature. This product is stable for several weeks at 4° C as an undiluted liquid. Dilute only prior to immediate use.
Expiration:	Expiration date is one (1) year from date of receipt.

Images



Immunohistochemistry

Immunocytochemistry of TLR3 antibody. Cell Type: K562 cells. Fixation: formalin fixed paraffin embedded. Antigen retrieval: not required. Primary antibody: TLR3 antibody at 10 µg/mL for 1 h at RT. Secondary antibody: Peroxidase rabbit secondary antibody at 1:10,000 for 45 min at RT. Localization: TLR3 is located in the cell membrane and cytoplasm. Staining: TLR3 is stained brown with hematoxylin purple nuclear counterstain.

Immunofluorescence Microscopy

Immunofluorescence Microscopy of TLR3 antibody. Cell Type: K562 cells. Fixation: 0.5% PFA. Antigen retrieval: not required. Primary antibody: TLR3 antibody at 2 µg/mL for 1 h at RT. Secondary antibody: Fluorescein rabbit secondary antibody at 1:10,000 for 45 min at RT. Localization: TLR3 is located in the cell membrane and cytoplasm. Staining: TLR3 as red fluorescent signal.

Western Blot

Western Blot of TLR3 antibody in K562 cell lysate. Lane A: TLR3 antibody at 0.5 µg/mL. Lane B: TLR3 antibody at 1 µg/mL. Lane C: TLR3 antibody at 2 µg/mL. Load: 35 µg per lane. Primary antibody: TLR3 antibody at designated concentrations for overnight at 4°C. Secondary antibody: Peroxidase rabbit secondary antibody at 1:10,000 for 45 min at RT. Block: 5% BLOTTO overnight at 4°C. Predicted/Observed size: 24 kDa, 92 kDa for TLR3. Other band(s): TLR3 splice variants and isoforms.

Disclaimer

This product is for research use only and is not intended for therapeutic or diagnostic applications. Please contact a technical service representative for more information. All products of animal origin manufactured by Rockland Immunochemicals are derived from starting materials of North American origin. Collection was performed in United States Department of Agriculture (USDA) inspected facilities and all materials have been inspected and certified to be free of disease and suitable for exportation. All properties listed are typical characteristics and are not specifications. All suggestions and data are offered in good faith but without guarantee as conditions and methods of use of our products are beyond our control. All claims must be made within 30 days following the date of delivery. The prospective user must determine the suitability of our materials before adopting them on a commercial scale. Suggested uses of our products are not recommendations to use our products in violation of any patent or as a license under any patent of Rockland Immunochemicals, Inc. If you require a commercial license to use this material and do not have one, then return this material, unopened to: Rockland Inc., P.O. BOX 5199, Limerick, Pennsylvania, USA.