

## Datasheet for 200-401-FF6

**TL1A Antibody****Overview**

<b>Description:</b>	Anti-TL1A (RABBIT) Antibody - 200-401-FF6
<b>Item No.:</b>	200-401-FF6
<b>Size:</b>	100 µg
<b>Applications:</b>	ELISA, WB
<b>Reactivity:</b>	Human, Mouse
<b>Host Species:</b>	Rabbit

**Product Details**

<b>Background:</b>	Members in the TNF and its receptor superfamilies regulate immune responses and induce apoptosis. DR3 (also termed Wsl-1, Apo-3, TRAMP, and LARD) is preferentially expressed by T lymphocytes and upregulated during T cell activation. The ligand for DR3 was recently identified and designated TL1A. TL1A also binds decoy receptor DcR3/TR6, which is expressed in several lung and colon carcinomas and in some normal tissues. TL1A induces apoptosis and NF-κB activation in DR3 expressing cells, which is antagonized by DcR3. TL1A is upregulated by proinflammatory cytokines TNF and IL-1. TL1A is a longer variant of TL1 (also called VEGI).
<b>Synonyms:</b>	TL1A Antibody, TL1, TL1A, VEGI, VEGI192A, TL1, Tumor necrosis factor ligand superfamily member 15, TNF ligand-related molecule 1
<b>Host Species:</b>	Rabbit
<b>Clonality:</b>	Polyclonal
<b>Format:</b>	IgG

**Target Details**

<b>Gene Name:</b>	TNFSF15
<b>Reactivity:</b>	Human, Mouse
<b>Immunogen Type:</b>	Recombinant Protein
<b>Immunogen:</b>	Anti-TL1A antibody was prepared from whole rabbit serum produced by repeated immunizations with recombinant human TL1A.

**Purity/Specificity:** Anti-TL1A Antibody is Protein A purified. TL1A will not cross-react with TL1.

**Relevant Links:**

- [UniProtKB - O95150](#)
- [GeneID - 9966](#)
- [NCBI - AAM77366](#)

## Application Details

**Tested Applications:** ELISA, WB

**Application Note:** Anti-TL1A Antibody has been tested for use in ELISA and Western Blotting. Specific conditions for reactivity should be optimized by the end user. Expect a band at approximately 28 kDa in Western Blots of specific cell lysates and tissues.

**Assay Dilutions:** All assays should be optimized by the user. Recommended dilutions (if any) may be listed below.

**ELISA:** 1:5000-1:20,000

**WB:** 0.5-2 µg/mL

## Formulation

**Physical State:** Liquid (sterile filtered)

**Concentration:** 1.0 mg/mL by UV absorbance at 280 nm

**Buffer:** 0.01 M Sodium Phosphate, 0.25 M Sodium Chloride, pH 7.2

**Preservative:** 0.02% (w/v) Sodium Azide

**Stabilizer:** None

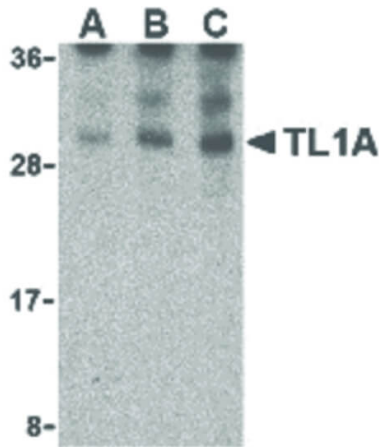
## Shipping & Handling

**Shipping Condition:** Dry Ice

**Storage Condition:** Store vial at -20° C prior to opening. Aliquot contents and freeze at -20° C or below for extended storage. Avoid cycles of freezing and thawing. Centrifuge product if not completely clear after standing at room temperature. This product is stable for several weeks at 4° C as an undiluted liquid. Dilute only prior to immediate use.

**Expiration:** Expiration date is one (1) year from date of receipt.

## Images

**Western Blot**

Western Blot of TL1A antibody in mouse lung cell lysates. Lane A: TL1A antibody at 0.5  $\mu\text{g}/\text{mL}$ . Lane B: TL1A antibody at 1  $\mu\text{g}/\text{mL}$ . Lane C: TL1A antibody at 2  $\mu\text{g}/\text{mL}$ . Load: 35  $\mu\text{g}$  per lane. Primary antibody: TL1A antibody at designated concentrations for overnight at 4°C. Secondary antibody: Peroxidase rabbit secondary antibody at 1:10,000 for 45 min at RT. Block: 5% BLOTTO overnight at 4°C. Predicted/Observed size: 30 kDa, 30 kDa for TL1A. Other band(s): TL1A splice variants and isoforms.

**Disclaimer**

This product is for research use only and is not intended for therapeutic or diagnostic applications. Please contact a technical service representative for more information. All products of animal origin manufactured by Rockland Immunochemicals are derived from starting materials of North American origin. Collection was performed in United States Department of Agriculture (USDA) inspected facilities and all materials have been inspected and certified to be free of disease and suitable for exportation. All properties listed are typical characteristics and are not specifications. All suggestions and data are offered in good faith but without guarantee as conditions and methods of use of our products are beyond our control. All claims must be made within 30 days following the date of delivery. The prospective user must determine the suitability of our materials before adopting them on a commercial scale. Suggested uses of our products are not recommendations to use our products in violation of any patent or as a license under any patent of Rockland Immunochemicals, Inc. If you require a commercial license to use this material and do not have one, then return this material, unopened to: Rockland Inc., P.O. BOX 5199, Limerick, Pennsylvania, USA.