

Datasheet for 200-401-E81

Histone H3 Antibody

Overview

Description:	Anti-Histone H3 (RABBIT) Antibody - 200-401-E81
Item No.:	200-401-E81
Size:	100 µg
Applications:	ELISA, WB
Reactivity:	Human
Host Species:	Rabbit

Product Details

Background:	Histone H3 is one of the five main histone proteins involved in the structure of chromatin in eukaryotic cells. Histone proteins are highly post-translationally modified with Histone H3 being the most extensively modified of the five histones. The N-terminal tail of histone H3 protrudes from the globular nucleosome core and can undergo several different types of post-translational modification that influence cellular processes. Nucleosomes wrap and compact DNA into chromatin, limiting DNA accessibility to the cellular machineries which require DNA as a template. Histones thereby play a central role in transcription regulation, DNA repair, DNA replication and chromosomal stability. DNA accessibility is regulated via a complex set of post-translational modifications of histones, also called histone code, and nucleosome remodeling. Histone H3 Antibody is ideal for investigators involved in Cell Signaling, Epigenetics, Nuclear Signaling research and Signal Transduction research.
Synonyms:	rabbit anti-histone H3 antibody, Histone H3.1, H3F, H3FA, H3FB, H3FL, H3FL, H3FC, H3FD, H3FI, H3FH, H3FK, H3FF, H3FJ, Histone 3 Antibody
Host Species:	Rabbit
Clonality:	Polyclonal
Format:	IgG

Target Details

Gene Name:	HIST1H3A
Reactivity:	Human

Immunogen Type:	Conjugated Peptide
Immunogen:	Anti-Histone-3 was prepared from whole rabbit serum produced by repeated immunizations with a peptide corresponding to the c-terminus region of human histone-3.
Purity/Specificity:	Anti-Histone H3 is directed against the human histone 3 protein. The product was protein A purified from monospecific antiserum by immunoaffinity chromatography using protein A coupled to agarose beads. A BLAST analysis was used to suggest reactivity with human and multiple other eukaryotic. Cross-reactivity with histone-3 from other sources have not been determined.
Relevant Links:	<ul style="list-style-type: none">• UniProtKB - P68431• NCBI - NP_003520.1• GeneID - 8350

Application Details

Tested Applications:	ELISA, WB
Application Note:	Histone H3 antibody has been tested for use in ELISA and western blot. This antibody is suitable for IHC. For western blots expect a band of approximately 15.4 kDa in size corresponding to the Histone 3 protein. Specific conditions for reactivity should be optimized by the end user.
Assay Dilutions:	All assays should be optimized by the user. Recommended dilutions (if any) may be listed below.
ELISA:	5.0 ug/ml
IHC:	User Optimized
WB:	1.0 ug/ml

Formulation

Physical State:	Liquid (sterile filtered)
Concentration:	1.0 mg/ml by UV absorbance at 280 nm
Buffer:	0.02 M Potassium Phosphate, 0.15 M Sodium Chloride, pH 7.2
Preservative:	0.01% (w/v) Sodium Azide

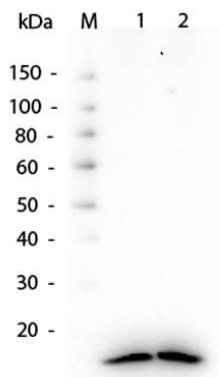
Shipping & Handling

Shipping Condition:	Dry Ice
----------------------------	---------

Storage Condition: Store H3 Antibody at -20° C prior to opening. Aliquot contents and freeze at -20° C or below for extended storage. Avoid cycles of freezing and thawing. Centrifuge product if not completely clear after standing at room temperature. This product is stable for several weeks at 4° C as an undiluted liquid. Dilute only prior to immediate use.

Expiration: Expiration date is one (1) year from date of receipt.

Images



Western Blot

Western Blot of Rabbit Anti-Histone H3 antibody. Lane 1: HeLa WCL (p/n W09-000-364). Lane 2: HeLa Nuclear Extract (p/n W09-001-367). Load: 10 µg per lane. Primary antibody: Histone H3 antibody at 1.0 µg/ml for 1 hr at RT. Secondary antibody: HRP Gt-a-Rb IgG secondary antibody (p/n 611-103-122) at 1:40,000 for 30 min at RT. Block: MB-070 overnight at 4°C. Predicted/Observed size: ~15 kDa, ~15 kDa for Histone H3.

Disclaimer

This product is for research use only and is not intended for therapeutic or diagnostic applications. Please contact a technical service representative for more information. All products of animal origin manufactured by Rockland Immunochemicals are derived from starting materials of North American origin. Collection was performed in United States Department of Agriculture (USDA) inspected facilities and all materials have been inspected and certified to be free of disease and suitable for exportation. All properties listed are typical characteristics and are not specifications. All suggestions and data are offered in good faith but without guarantee as conditions and methods of use of our products are beyond our control. All claims must be made within 30 days following the date of delivery. The prospective user must determine the suitability of our materials before adopting them on a commercial scale. Suggested uses of our products are not recommendations to use our products in violation of any patent or as a license under any patent of Rockland Immunochemicals, Inc. If you require a commercial license to use this material and do not have one, then return this material, unopened to: Rockland Inc., P.O. BOX 5199, Limerick, Pennsylvania, USA.