

Datasheet for 200-401-DG5**OMI Antibody****Overview**

Description:	Anti-OMI (RABBIT) Antibody - 200-401-DG5
Item No.:	200-401-DG5
Size:	100 µg
Applications:	ELISA, IF, IHC, WB
Reactivity:	Human
Host Species:	Rabbit

Product Details

Background:	Inhibitor of apoptosis proteins (IAPs) were initially identified in baculoviruses as proteins that inhibit apoptosis of the host cells to allow time for viral replication. Cellular homologues containing at least one baculoviral IAP repeat (BIR) motif essential for their anti-apoptosis activity have been identified in yeasts and higher organisms and often act by binding and inhibiting processed caspases. The activity of these proteins can be modulated by the expression of proteins such as Smac/DIABLO and XAF-1 which displace or prevent the binding of caspases by IAPs. Recently, a mitochondrial serine protease termed Omi/HtrA2 has been found to bind IAPs. Similar to Smac, Omi possesses a conserved IAP-binding motif, but acts to cleave IAPs to irreversibly inactivate IAPs and promote apoptosis.
Synonyms:	OMI Antibody, OMI, PARK13, PRSS25, OMI, Serine protease HTRA2, mitochondrial, High temperature requirement protein A2, HtrA2
Host Species:	Rabbit
Clonality:	Polyclonal
Format:	IgG

Target Details

Gene Name:	HTRA2
Reactivity:	Human
Immunogen Type:	Conjugated Peptide

Immunogen:	Anti-OMI antibody was prepared from whole rabbit serum produced by repeated immunizations with a peptide corresponding to 16 amino acids near the C-terminus of human Omi.
Purity/Specificity:	Anti-OMI Antibody is purified by ion exchange chromatography. Cross reactivity with OMI from other sources has not been determined.
Relevant Links:	<ul style="list-style-type: none">• UniProtKB - O43464• GeneID - 27429• NCBI - AAB94569

Application Details

Tested Applications:	ELISA, IF, IHC, WB
Application Note:	Anti-OMI Antibody has been tested for use in ELISA, Western Blotting, Immunohistochemistry, and Immunofluorescence. Specific conditions for reactivity should be optimized by the end user. Expect a band at approximately 49 kDa in Western Blots of specific cell lysates and tissues.
Assay Dilutions:	All assays should be optimized by the user. Recommended dilutions (if any) may be listed below.
ELISA:	1:5,000 - 1:20,000
IF:	20 µg/mL
IHC:	2 µg/mL
WB:	.5-2 µg/mL

Formulation

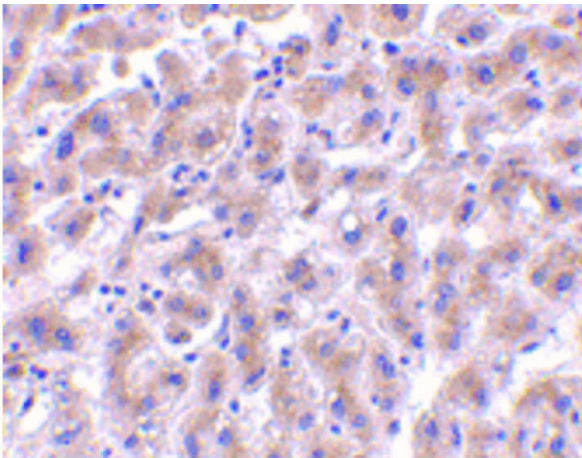
Physical State:	Liquid (sterile filtered)
Concentration:	1 mg/mL by UV absorbance at 280 nm
Buffer:	0.01 M Sodium Phosphate, 0.25 M Sodium Chloride, pH 7.2
Preservative:	0.02% (w/v) Sodium Azide
Stabilizer:	None

Shipping & Handling

Shipping Condition:	Dry Ice
----------------------------	---------

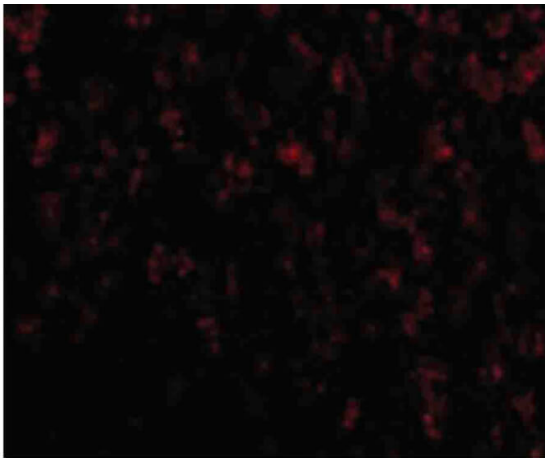
Storage Condition:	Store vial at -20° C prior to opening. Aliquot contents and freeze at -20° C or below for extended storage. Avoid cycles of freezing and thawing. Centrifuge product if not completely clear after standing at room temperature. This product is stable for several weeks at 4° C as an undiluted liquid. Dilute only prior to immediate use.
Expiration:	Expiration date is one (1) year from date of receipt.

Images



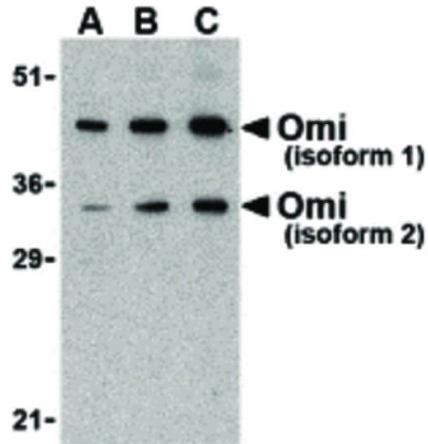
Immunohistochemistry

Immunohistochemistry of OMI antibody. Tissue: human liver tissue. Fixation: formalin fixed paraffin embedded. Antigen retrieval: not required. Primary antibody: OMI antibody at 2 µg/mL for 1 h at RT. Secondary antibody: Peroxidase rabbit secondary antibody at 1:10,000 for 45 min at RT. Localization: OMI is mitochondrial. Staining: OMI is stained with hematoxylin purple nuclear counterstain.



Immunofluorescence Microscopy

Immunofluorescence Microscopy of OMI antibody. Cell Type: human liver cells. Fixation: 0.5% PFA. Antigen retrieval: not required. Primary antibody: OMI antibody at 20 µg/mL for 1 h at RT. Secondary antibody: Fluorescein rabbit secondary antibody at 1:10,000 for 45 min at RT. Localization: OMI is mitochondrial. Staining: OMI as green fluorescent signal.

**Western Blot**

Western Blot of OMI antibody. Lane A: U937 lysate at 0.5 µg/ml. Lane B: U937 lysate at 1 µg/ml. Lane C: U937 lysate at 2 µg/ml. Load: 35 µg per lane. Primary antibody: OMI antibody at designated concentrations for overnight at 4°C. Secondary antibody: Peroxidase rabbit secondary antibody at 1:10,000 for 45 min at RT. Block: 5% BLOTTO overnight at 4°C. Predicted/Observed size: 49 kDa, 46 kDa for OMI. Other band(s): OMI splice variants and isoforms.

Disclaimer

This product is for research use only and is not intended for therapeutic or diagnostic applications. Please contact a technical service representative for more information. All products of animal origin manufactured by Rockland Immunochemicals are derived from starting materials of North American origin. Collection was performed in United States Department of Agriculture (USDA) inspected facilities and all materials have been inspected and certified to be free of disease and suitable for exportation. All properties listed are typical characteristics and are not specifications. All suggestions and data are offered in good faith but without guarantee as conditions and methods of use of our products are beyond our control. All claims must be made within 30 days following the date of delivery. The prospective user must determine the suitability of our materials before adopting them on a commercial scale. Suggested uses of our products are not recommendations to use our products in violation of any patent or as a license under any patent of Rockland Immunochemicals, Inc. If you require a commercial license to use this material and do not have one, then return this material, unopened to: Rockland Inc., P.O. BOX 5199, Limerick, Pennsylvania, USA.