

Datasheet for 200-401-B60**CCL2 Antibody****Overview**

Description:	Anti-Bovine CCL2 (RABBIT) Antibody - 200-401-B60
Item No.:	200-401-B60
Size:	100 µg
Applications:	ELISA, WB
Reactivity:	Bovine
Host Species:	Rabbit

Product Details

Background:	CCL2 is a small cytokine belonging to the CC chemokine family that recruits monocytes, memory T cells, and dendritic cells to sites of tissue injury and infection. This chemokine is produced as a protein precursor containing a signal peptide of 23 amino acids and a mature peptide of 76 amino acids. It is a monomeric polypeptide, with a total molecular weight of approximately 8.8 kDa. The cell surface receptors that bind CCL2 are CCR2 and CCR4. CCL2 is found at the site of tooth eruption and bone degradation. In the bone, CCL2 is expressed by mature osteoclasts and osteoblasts and is under the control of nuclear factor κB (NFκB). In human osteoclasts, CCL2 and RANTES (regulated on activation normal T cell expressed and secreted) may act as an autocrine loop in human osteoclast differentiation. CCL2 causes the degranulation of basophils and mast cells, an effect potentiated by pre-treatment with IL-3 and other cytokines.
Synonyms:	rabbit anti-CCL2 antibody, CCL-2, CCL 2, Chemokine (C-C motif) ligand 2, monocyte chemotactic (or chemoattractant) protein-1 (MCP-1)
Host Species:	Rabbit
Clonality:	Polyclonal
Format:	IgG

Target Details

Gene Name:	CCL2
Reactivity:	Bovine
Immunogen Type:	Recombinant Protein

Immunogen:	This protein-A purified antibody was prepared from whole rabbit serum produced by repeated immunizations with a recombinant protein raised in yeast, corresponding to the 76 amino acids of the mature bovine CCL2 protein.
Purity/Specificity:	This product was Protein-A purified from monospecific antiserum by chromatography. This antibody is specific for bovine CCL2 protein. A BLAST analysis was used to suggest cross-reactivity with CCL2 from bovine sources based on 100% homology with the immunizing sequence. Partial reactivity is expected against <i>Sus scrofa</i> 85.5% and <i>Bos Taurus</i> 81.1%. Cross-reactivity with CCL2 from other sources has not been determined.
Relevant Links:	<ul style="list-style-type: none">• NCBI - 27806711• UniProtKB - A5PJF7• GenelD - 281043

Application Details

Tested Applications:	ELISA, WB
Application Note:	This protein-A purified antibody has been tested for use in ELISA and western blotting. Specific conditions for reactivity should be optimized by the end user. Expect a band approximately 8.8 kDa in size corresponding to bovine CCL2 protein by western blotting in the appropriate cell lysate or extract.
Assay Dilutions:	All assays should be optimized by the user. Recommended dilutions (if any) may be listed below.
ELISA:	1:4,500
WB:	1 µg/ml

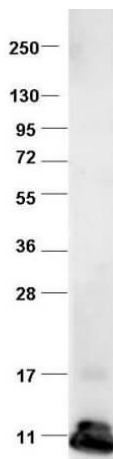
Formulation

Physical State:	Lyophilized
Concentration:	1.0 mg/mL by UV absorbance at 280 nm
Buffer:	0.02 M Potassium Phosphate, 0.15 M Sodium Chloride, pH 7.2
Preservative:	0.01% (w/v) Sodium Azide
Stabilizer:	None
Reconstitution Volume:	100 µL
Reconstitution Buffer:	Restore with deionized water (or equivalent)

Shipping & Handling

Shipping Condition:	Ambient
Storage Condition:	Store vial at 4° C prior to restoration. For extended storage aliquot contents and freeze at -20° C or below. Avoid cycles of freezing and thawing. Centrifuge product if not completely clear after standing at room temperature. This product is stable for several weeks at 4° C as an undiluted liquid. Dilute only prior to immediate use.
Expiration:	Expiration date is one (1) year from date of receipt.

Images



Western Blot

Western blot using Rockland's protein-A purified anti-bovine CCL2 antibody shows detection of recombinant bovine CCL2 at 8.8kDa raised in yeast. Protein was purified and resolved by SDS-PAGE, then transferred to PVDF membrane. Membrane was blocked with 3% BSA (BSA-30, diluted 1:10), and probed with Rockland Inc. Anti-bovine CCL2. After washing, membrane was probed with Dylight 649 Conjugated Anti-Rabbit IgG (H&L) (Donkey) Antibody (611-743-127).

Disclaimer

This product is for research use only and is not intended for therapeutic or diagnostic applications. Please contact a technical service representative for more information. All products of animal origin manufactured by Rockland Immunochemicals are derived from starting materials of North American origin. Collection was performed in United States Department of Agriculture (USDA) inspected facilities and all materials have been inspected and certified to be free of disease and suitable for exportation. All properties listed are typical characteristics and are not specifications. All suggestions and data are offered in good faith but without guarantee as conditions and methods of use of our products are beyond our control. All claims must be made within 30 days following the date of delivery. The prospective user must determine the suitability of our materials before adopting them on a commercial scale. Suggested uses of our products are not recommendations to use our products in violation of any patent or as a license under any patent of Rockland Immunochemicals, Inc. If you require a commercial license to use this material and do not have one, then return this material, unopened to: Rockland Inc., P.O. BOX 5199, Limerick, Pennsylvania, USA.