

Datasheet for 200-401-AC6**Caspase-10 Antibody****Overview**

Description:	Anti-Caspase-10 (RABBIT) Antibody - 200-401-AC6
Item No.:	200-401-AC6
Size:	100 µg
Applications:	ELISA, IF, IHC, WB
Reactivity:	Human
Host Species:	Rabbit

Product Details

Background: Apoptosis is related to many diseases and induced by a family of cell death receptors and their ligands. Cell death signals are transduced by death domain (DD)- containing adapter molecules and members of the ICE/CED-3 protease family. A novel ICE/CED-3 protease was identified recently, designated FLICE2 and Mch4 and renamed as caspase-10. Caspase-10 has two death effector domains (DEDs) that bind to the DED in the adapter molecule FADD and recruits both TNFR1 and CD95 to form complexes with these receptors. Caspase-10 is therefore involved in the CD95 and TNFR1 induced apoptosis. Caspase-10 cleaves and activates caspase-3, -4, -6, -7, -8 and -9, which causes the proteolytic cleavage of many key proteins such as PARP. Cleavage of PARP occurs in many different systems during apoptosis and is the hallmark of programmed cell death. Caspase-10 is expressed in many tissues and cell lines.

Synonyms:	Caspase-10 Antibody, MCH4, Caspase-10, Apoptotic protease Mch-4, CASP-10
Host Species:	Rabbit
Clonality:	Polyclonal
Format:	IgG

Target Details

Gene Name:	CASP10
Reactivity:	Human
Immunogen Type:	Conjugated Peptide

Immunogen:	Anti-Caspase-10 antibody was prepared from whole rabbit serum produced by repeated immunizations with a 17 amino acid peptide near the C-terminus of human Caspase-10.
Purity/Specificity:	Anti-Caspase-10 Antibody is purified by DEAE purification methods. This antibody only recognizes FLICE2 form of caspase-10.
Relevant Links:	<ul style="list-style-type: none">• UniProtKB - Q92851• GeneID - 843• NCBI - AAD28402

Application Details

Tested Applications:	ELISA, IF, IHC, WB
Application Note:	Anti-Caspase-10 Antibody has been tested for use in ELISA, immunocytochemistry, immunofluorescence, and Western Blotting. Specific conditions for reactivity should be optimized by the end user. Expect a band at approximately 59 kDa in Western Blots of specific cell lysates and tissues.
Assay Dilutions:	All assays should be optimized by the user. Recommended dilutions (if any) may be listed below.
ELISA:	1:10,000
WB:	1 µg/mL

Formulation

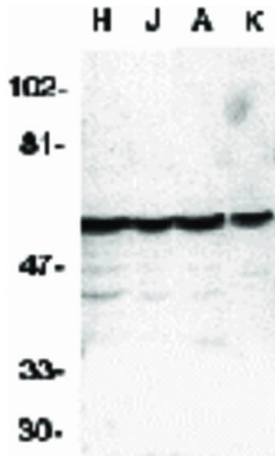
Physical State:	Liquid (sterile filtered)
Concentration:	1 mg/mL by UV absorbance at 280 nm
Buffer:	0.01 M Sodium Phosphate, 0.25 M Sodium Chloride, pH 7.2
Preservative:	0.02% (w/v) Sodium Azide
Stabilizer:	None

Shipping & Handling

Shipping Condition:	Dry Ice
Storage Condition:	Store vial at -20° C prior to opening. Aliquot contents and freeze at -20° C or below for extended storage. Avoid cycles of freezing and thawing. Centrifuge product if not completely clear after standing at room temperature. This product is stable for several weeks at 4° C as an undiluted liquid. Dilute only prior to immediate use.

Expiration: Expiration date is one (1) year from date of receipt.

Images



Western Blot

Western Blot of Rabbit anti-Caspase-10 antibody. Lane 1: HeLa whole cell lysate (H). Lane 2: Jurkat whole cell lysate (J). Lane 3: A431 whole cell lysate (A). Lane 4: K562 whole cell lysate (K). Load: 35 μ g per lane. Primary antibody: anti-Caspase-10 antibody at 1 μ g/mL for overnight at 4°C. Secondary antibody: Peroxidase rabbit secondary antibody at 1:10,000 for 45 min at RT. Block: 5% BLOTTO overnight at 4°C. Predicted/Observed size: 59 kDa, 59 kDa for Caspase-10. Other band(s): None.

Disclaimer

This product is for research use only and is not intended for therapeutic or diagnostic applications. Please contact a technical service representative for more information. All products of animal origin manufactured by Rockland Immunochemicals are derived from starting materials of North American origin. Collection was performed in United States Department of Agriculture (USDA) inspected facilities and all materials have been inspected and certified to be free of disease and suitable for exportation. All properties listed are typical characteristics and are not specifications. All suggestions and data are offered in good faith but without guarantee as conditions and methods of use of our products are beyond our control. All claims must be made within 30 days following the date of delivery. The prospective user must determine the suitability of our materials before adopting them on a commercial scale. Suggested uses of our products are not recommendations to use our products in violation of any patent or as a license under any patent of Rockland Immunochemicals, Inc. If you require a commercial license to use this material and do not have one, then return this material, unopened to: Rockland Inc., P.O. BOX 5199, Limerick, Pennsylvania, USA.