

Datasheet for 200-401-A66**TLR11 Antibody****Overview**

| | |
|----------------------|--|
| Description: | Anti-TLR11 (RABBIT) Antibody - 200-401-A66 |
| Item No.: | 200-401-A66 |
| Size: | 100 µg |
| Applications: | ELISA, IF, IHC, WB |
| Reactivity: | Mouse |
| Host Species: | Rabbit |

Product Details

| | |
|----------------------|---|
| Background: | Toll-like receptors (TLRs) are signaling molecules that recognize different microbial products during infection and serve as an important link between the innate and adaptive immune responses. These proteins act through adaptor molecules such as MyD88 and TIRAP to activate various kinases and transcription factors. TLR11 is one of three mouse TLRs that lack a human ortholog. It is activated specifically by uropathogenic bacteria, and mice lacking TLR11 showed a much greater susceptibility to uropathogenic infections, indicating a potentially important role for TLR11 in preventing infections in the urogenital system. |
| Synonyms: | hgnc31753 antibody, Toll-like receptor 11 antibody, Tlr11, Gm287, Toll-like receptor 12, Tlr12 |
| Host Species: | Rabbit |
| Clonality: | Polyclonal |
| Format: | IgG |

Target Details

| | |
|------------------------|--|
| Gene Name: | Tlr11 |
| Reactivity: | Mouse |
| Immunogen Type: | Conjugated Peptide |
| Immunogen: | This affinity purified antibody was prepared from whole rabbit serum produced by repeated immunizations with a synthetic peptide corresponding to a region near the carboxy terminus of mouse toll-like receptor 11 (TLR11) protein. |

Purity/Specificity: This IgG fraction antibody is directed against mouse TLR11 protein. This product is an IgG fraction antibody purified from monospecific antiserum by a multi-step process which includes delipidation, salt fractionation and ion exchange chromatography followed by extensive dialysis against the buffer stated above. This antibody is reactive with TLR11 from mouse sources. Cross reactivity with TLR11 from other sources has not been determined.

Relevant Links:

- [UniProtKB - Q6R5P0](#)
- [NCBI - 45429992](#)
- [GeneID - 239081](#)

Application Details

Tested Applications: ELISA, IF, IHC, WB

Application Note: This IgG fraction antibody has been tested for use in ELISA, immunocytochemistry, immunofluorescence, and western blotting. Specific conditions for reactivity should be optimized by the end user. Expect a band at ~90 kDa in size corresponding to TLR11 by western blotting in the appropriate cell lysate or extract.

Assay Dilutions: All assays should be optimized by the user. Recommended dilutions (if any) may be listed below.

ELISA: 1:10,000 - 1:40,000

IF: 10 µg/mL

WB: 1:500 - 1:3,000

Formulation

Physical State: Liquid (sterile filtered)

Concentration: 1.0 mg/mL by UV absorbance at 280 nm

Buffer: 0.02 M Potassium Phosphate, 0.15 M Sodium Chloride, pH 7.2

Preservative: 0.02% (w/v) Sodium Azide

Stabilizer: None

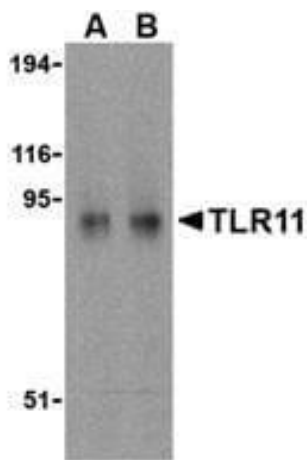
Shipping & Handling

Shipping Condition: Dry Ice

Storage Condition: Store vial at -20° C prior to opening. Aliquot contents and freeze at -20° C or below for extended storage. Avoid cycles of freezing and thawing. Centrifuge product if not completely clear after standing at room temperature. This product is stable for several weeks at 4° C as an undiluted liquid. Dilute only prior to immediate use.

Expiration: Expiration date is one (1) year from date of receipt.

Images



Western Blot

Western Blot of Rabbit Anti-TLR11 Antibody. Lane 1: RAW264.7 whole cell lysate using 0.5 µg/ml. Lane 2: RAW264.7 whole cell lysate using 1.0 µg/ml. Load: 10 µg per lane. Primary antibody: TLR-11 antibody overnight at 4°C. Secondary antibody: IRDye800™ rabbit secondary antibody at 1:10,000 for 45 min at RT. Block: 5% BLOTTO overnight at 4°C. Predicted/Observed size: 106 kDa, ~90 kDa for TLR11. Other band(s): none.

Disclaimer

This product is for research use only and is not intended for therapeutic or diagnostic applications. Please contact a technical service representative for more information. All products of animal origin manufactured by Rockland Immunochemicals are derived from starting materials of North American origin. Collection was performed in United States Department of Agriculture (USDA) inspected facilities and all materials have been inspected and certified to be free of disease and suitable for exportation. All properties listed are typical characteristics and are not specifications. All suggestions and data are offered in good faith but without guarantee as conditions and methods of use of our products are beyond our control. All claims must be made within 30 days following the date of delivery. The prospective user must determine the suitability of our materials before adopting them on a commercial scale. Suggested uses of our products are not recommendations to use our products in violation of any patent or as a license under any patent of Rockland Immunochemicals, Inc. If you require a commercial license to use this material and do not have one, then return this material, unopened to: Rockland Inc., P.O. BOX 5199, Limerick, Pennsylvania, USA.