

Datasheet for 200-401-A34
Survivin Antibody**Overview**

Description:	Anti-Survivin (RABBIT) Antibody - 200-401-A34
Item No.:	200-401-A34
Size:	100 µg
Applications:	ELISA, IF, IHC, WB
Reactivity:	Human
Host Species:	Rabbit

Product Details

Background:	Apoptosis, or programmed cell death, is related to many diseases, such as cancer. Apoptosis is triggered by a variety of stimuli, including members of the TNF family, and prevented by the inhibitor of apoptosis (IAP) proteins. IAP proteins form a conserved gene family that binds to and inhibits cell death proteases. A novel IAP protein was recently identified and designated Survivin (also referred to as apoptosis inhibitor 4 (API4) and TIAP). Survivin interacts with the processed form of caspase-3 and inhibits its proteolytic activity. Survivin is predominantly expressed in tissues of embryos, transformed cell lines, and many human cancers and lymphomas.
Synonyms:	API4 antibody, Apoptosis Inhibitor 4 antibody, Apoptosis inhibitor survivin antibody, Apoptosis inhibitor4 antibody, Baculoviral IAP repeat containing 5 antibody, Baculoviral IAP repeat containing protein 5 antibody, BIRC 5 antibody
Host Species:	Rabbit
Clonality:	Polyclonal
Format:	IgG

Target Details

Gene Name:	BIRC5
Reactivity:	Human
Immunogen Type:	Conjugated Peptide

Immunogen:	This IgG fraction antibody was prepared from whole rabbit serum produced by repeated immunizations with a synthetic peptide corresponding to a region near the carboxy terminus of human Survivin protein.
Purity/Specificity:	This IgG fraction antibody is directed against human Survivin protein. The product is affinity chromatography purified via peptide column. Reactivity against Survivin from other sources has not been determined.
Relevant Links:	<ul style="list-style-type: none">• NCBI - NP_001012270.1• UniProtKB - O15392• GeneID - 332

Application Details

Tested Applications:	ELISA, IF, IHC, WB
Application Note:	This affinity purified antibody has been tested for use in ELISA, immunocytochemistry, immunofluorescence, and western blotting. Specific conditions for reactivity should be optimized by the end user. Paraformaldehyde fixation is recommended for immunohistochemical staining. Expect a band at ~17 kDa in size corresponding to Survivin by western blotting in the appropriate cell lysate or extract.
Assay Dilutions:	All assays should be optimized by the user. Recommended dilutions (if any) may be listed below.
ELISA:	1:10,000 - 1:40,000
IF:	1:100 - 1:1,000
WB:	1:200 - 1:2,000

Formulation

Physical State:	Liquid (sterile filtered)
Concentration:	1.0 mg/mL by UV absorbance at 280 nm
Buffer:	0.02 M Potassium Phosphate, 0.15 M Sodium Chloride, pH 7.2
Preservative:	0.02% (w/v) Sodium Azide
Stabilizer:	None

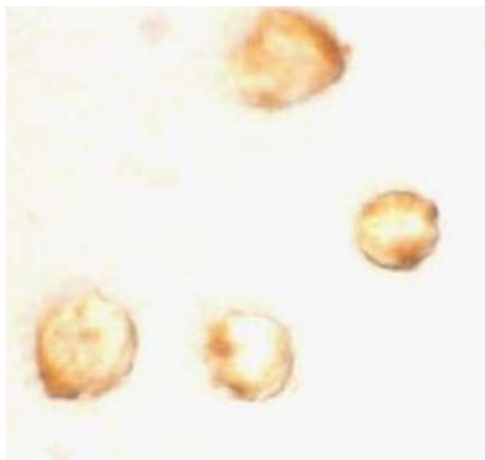
Shipping & Handling

Shipping Condition:	Dry Ice
----------------------------	---------

Storage Condition: Store vial at -20° C prior to opening. Aliquot contents and freeze at -20° C or below for extended storage. Avoid cycles of freezing and thawing. Centrifuge product if not completely clear after standing at room temperature. This product is stable for several weeks at 4° C as an undiluted liquid. Dilute only prior to immediate use.

Expiration: Expiration date is one (1) year from date of receipt.

Images

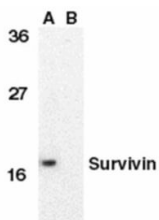


Immunohistochemistry

Immunocytochemical staining using Rockland's IgG Fraction of anti-Survivin antibody at 10 µg/ml shows detection of Survivin in MOLT4 cells. Cells were fixed in 4% paraformaldehyde.

Western Blot

Western blot using Rockland's IgG Fraction of anti-Survivin antibody shows detection of a single band at ~17 kDa corresponding to Survivin in MOLT4 cell lysates in the absence (lane A) and presence (lane B) of blocking peptide. Primary antibody was used at 1 µg/ml.



Disclaimer

This product is for research use only and is not intended for therapeutic or diagnostic applications. Please contact a technical service representative for more information. All products of animal origin manufactured by Rockland Immunochemicals are derived from starting materials of North American origin. Collection was performed in United States Department of Agriculture (USDA) inspected facilities and all materials have been inspected and certified to be free of disease and suitable for exportation. All properties listed are typical characteristics and are not specifications. All suggestions and data are offered in good faith but without guarantee as conditions and methods of use of our products are beyond our control. All claims must be made within 30 days following the date of delivery. The prospective user must determine the suitability of our materials before adopting them on a commercial scale. Suggested uses of our products are not recommendations to use our products in violation of any patent or as a license under any patent of Rockland Immunochemicals, Inc. If you require a commercial license to use this material and do not have one, then return this material, unopened to: Rockland Inc., P.O. BOX 5199, Limerick, Pennsylvania, USA.