

Datasheet for 200-401-089S

Dextranase Antibody**Overview**

Description:	Anti-Dextranase (Penicillium species) (RABBIT) Antibody - 200-401-089S
Item No.:	200-401-089S
Size:	25 µL
Applications:	WB
Reactivity:	Penicillium
Host Species:	Rabbit

Product Details

Background:	Dextranase has catalytic activity: endohydrolysis of (1->6)-alpha-D-glucosidic linkages in dextran.
Synonyms:	rabbit anti-Dextranase Antibody, dextranase, Alpha-1,6-glucan-6-glucanohydrolase, DEX
Host Species:	Rabbit
Clonality:	Polyclonal
Format:	IgG

Target Details

Gene Name:	DEX
Reactivity:	Penicillium
Immunogen Type:	Native Protein
Immunogen:	Dextranase [Penicillium species]
Purity/Specificity:	Anti-DEXTRANASE is an IgG fraction antibody purified from monospecific antiserum by a multi-step process which includes delipidation, salt fractionation and ion exchange chromatography followed by extensive dialysis against the buffer stated above. Assay by immunoelectrophoresis resulted in a single precipitin arc against anti-Rabbit Serum as well as purified and partially purified Dextranase [Penicillium species]. Cross reactivity against Dextranase from other tissues and species may occur but have not been specifically determined.

Relevant Links:

- [200-401-089 SDS](#)

- [UniProtKB - P48845](#)
- [NCBI - AAB47720.1](#)

Application Details

Tested Applications:	WB
Application Note:	DEXTRANASE Antibody has been tested by western blot and is suitable to be assayed against 1.0 µg of Dextranase [Penicillium species] in a standard ELISA using Peroxidase conjugated Affinity Purified anti-Rabbit IgG [H&L] (Goat) code #611-1302 and (ABTS (2,2'-azino-bis-[3-ethylbenthiiazoline-6-sulfonic acid]) code # ABTS-100 as a substrate for 30 minutes at room temperature. A working dilution of 1:10,000 to 1:50,000 of the reconstitution concentration is suggested for this product.
Assay Dilutions:	All assays should be optimized by the user. Recommended dilutions (if any) may be listed below.
ELISA:	1:5,000 - 1:20,000
IP:	1:100
WB:	1:500 - 1:5,000

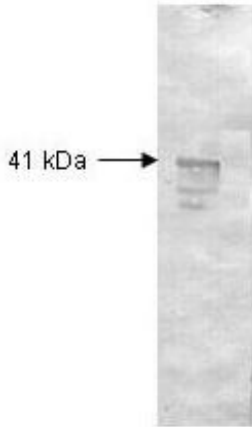
Formulation

Physical State:	Liquid (sterile filtered)
Concentration:	1.0 mg/ml by UV absorbance at 280 nm
Buffer:	0.02 M Potassium Phosphate, 0.15 M Sodium Chloride, pH 7.2
Preservative:	0.01% (w/v) Sodium Azide
Stabilizer:	None

Shipping & Handling

Shipping Condition:	Dry Ice
Storage Condition:	Store vial at -20° C or below prior to opening. This vial contains a relatively low volume of reagent (25 µL). To minimize loss of volume dilute 1:10 by adding 225 µL of the buffer stated above directly to the vial. Recap, mix thoroughly and briefly centrifuge to collect the volume at the bottom of the vial. Use this intermediate dilution when calculating final dilutions as recommended below. Store the vial at -20°C or below after dilution. Avoid cycles of freezing and thawing.
Expiration:	Expiration date is one (1) year from date of receipt.

Images



Western Blot

Both the antiserum and IgG fractions of anti-Dextranase (Penicillium) are shown to detect under reducing conditions of SDS-PAGE the 41,000 dalton enzyme in cellular extracts. Approximately 10 μ g of total protein is loaded per lane. A 1:2,000 dilution of the primary antibody is used followed by detection using HRP Goat-a-Rabbit IgG [H&L] (611-1302) diluted 1:4,000 and color development using 4-CN substrate until sufficient color develops. Other detection systems will yield similar results.

Disclaimer

This product is for research use only and is not intended for therapeutic or diagnostic applications. Please contact a technical service representative for more information. All products of animal origin manufactured by Rockland Immunochemicals are derived from starting materials of North American origin. Collection was performed in United States Department of Agriculture (USDA) inspected facilities and all materials have been inspected and certified to be free of disease and suitable for exportation. All properties listed are typical characteristics and are not specifications. All suggestions and data are offered in good faith but without guarantee as conditions and methods of use of our products are beyond our control. All claims must be made within 30 days following the date of delivery. The prospective user must determine the suitability of our materials before adopting them on a commercial scale. Suggested uses of our products are not recommendations to use our products in violation of any patent or as a license under any patent of Rockland Immunochemicals, Inc. If you require a commercial license to use this material and do not have one, then return this material, unopened to: Rockland Inc., P.O. BOX 5199, Limerick, Pennsylvania, USA.