

Datasheet for 200-401-079S

Trypsin Inhibitor Antibody

Overview

Description:	Anti-Trypsin Inhibitor (RABBIT) Antibody - 200-401-079S
Item No.:	200-401-079S
Size:	25 µL
Applications:	ELISA, WB
Reactivity:	Soybean
Host Species:	Rabbit

Product Details

Background:	Trypsin inhibitor antibody is specific for soybean trypsin inhibitor. Soybean trypsin inhibitor inhibits trypsin, but also chymotrypsin and plasmin at a reduced level. SBTI has inhibitory effects towards plasma kallikrein and coagulation Factor Xa. Soybean trypsin inhibitor will not inhibit metalloproteases, tissue-based kallikrein, acid proteases, or thio proteases.
Synonyms:	rabbit anti-trypsin inhibitor antibody, 25 kDa trypsin inhibitor (Protease inhibitor 15 preproprotein) antibody, CRISP8 antibody, KTi antibody, Kti S antibody, KTi3 antibody, KtiS antibody, Kunitz trypsin inhibitor antibody, Kunitz type trypsin inhibitor A antibody
Host Species:	Rabbit
Clonality:	Polyclonal
Format:	IgG

Target Details

Gene Name:	KTi3
Reactivity:	Soybean
Immunogen Type:	Native Protein
Immunogen:	Trypsin Inhibitor [Soybean]

Purity/Specificity: Anti-trypsin inhibitor antibody is an IgG fraction antibody purified from monospecific antiserum by a multi-step process which includes delipidation, salt fractionation and ion exchange chromatography followed by extensive dialysis against the buffer stated above. Assay by immunoelectrophoresis resulted in a single precipitin arc against anti-Rabbit Serum as well as purified and partially purified Trypsin Inhibitor [Soybean]. Cross reactivity against Trypsin Inhibitor from other sources may occur but have not been specifically determined.

Relevant Links:

- [UniProtKB - P01070](#)
- [NCBI - P01070.2](#)
- [GeneID - 547831](#)

Application Details

Tested Applications: ELISA, WB

Application Note: Soybean trypsin inhibitor antibody has been tested by ELISA and western blot and is assayed against 1.0 ug of Trypsin Inhibitor [Soybean] in a standard ELISA using Peroxidase conjugated Affinity Purified anti-Rabbit IgG #611-1302 and (ABTS (2,2'-azino-bis-[3-ethylbenthiiazoline-6-sulfonic acid]) as a substrate for 30 minutes at room temperature. A working dilution of 1:3,000 to 1:12,000 of the reconstitution concentration is suggested for this product.

Assay Dilutions: All assays should be optimized by the user. Recommended dilutions (if any) may be listed below.

ELISA: 1:5,000 - 1:20,000

IP: 1:100

WB: 1:500 - 1:5,000

Formulation

Physical State: Liquid (sterile filtered)

Concentration: 1.0 mg/mL by UV absorbance at 280 nm

Buffer: 0.02 M Potassium Phosphate, 0.15 M Sodium Chloride, pH 7.2

Preservative: 0.01% (w/v) Sodium Azide

Stabilizer: None

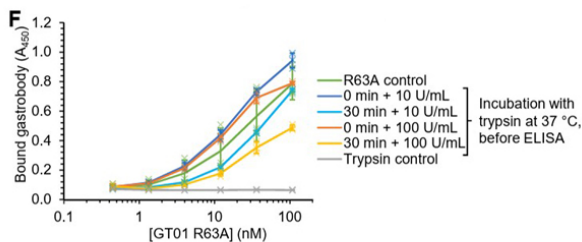
Shipping & Handling

Shipping Condition: Dry Ice

Storage Condition: Store vial at -20° C or below prior to opening. This vial contains a relatively low volume of reagent (25 µL). To minimize loss of volume dilute 1:10 by adding 225 µL of the buffer stated above directly to the vial. Recap, mix thoroughly and briefly centrifuge to collect the volume at the bottom of the vial. Use this intermediate dilution when calculating final dilutions as recommended below. Store the vial at -20°C or below after dilution. Avoid cycles of freezing and thawing.

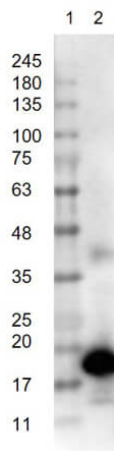
Expiration: Expiration date is three (3) months from date of receipt.

Images



ELISA

F) GT01 R63A binds to GTD after incubation with trypsin. GT01 R63A was incubated with 10 or 100 U/mL trypsin for 0 or 30 min. GT01 R63A (green) or trypsin-only controls (gray) were incubated for 30 min at 37 °C before ELISA. GT01 R63A binding to GTD was measured by ELISA. All error bars are mean ± 1 s.d., n = 3 with individual data-points as crosses. Supplementary Figure 8. PMID: 34381153



Western Blot

Western Blot of Rabbit Anti-Trypsin Inhibitor Antibody. Lane 1: Opal PreStained Molecular Weight Marker (p/n MB-210-0500). Lane 2: Trypsin Inhibitor [50ng]. Primary Antibody: Anti-Trypsin Inhibitor at 1µg/mL overnight at 2-8°C. Secondary Antibody: Goat Anti-Rabbit IgG HRP (p/n 611-103-122) 1:40,000 for 30mins at RT. Block: BlockOut Buffer (p/n MB-073) for 30mins at RT. Expect: ~25kDa.

Disclaimer

This product is for research use only and is not intended for therapeutic or diagnostic applications. Please contact a technical service representative for more information. All products of animal origin manufactured by Rockland Immunochemicals are derived from starting materials of North American origin. Collection was performed in United States Department of Agriculture (USDA) inspected facilities and all materials have been inspected and certified to be free of disease and suitable for exportation. All properties listed are typical characteristics and are not specifications. All suggestions and data are offered in good faith but without guarantee as conditions and methods of use of our products are beyond our control. All claims must be made within 30 days following the date of delivery. The prospective user must determine the suitability of our materials before adopting them on a commercial scale. Suggested uses of our products are not recommendations to use our products in violation of any patent or as a license under any patent of Rockland Immunochemicals, Inc. If you require a commercial license to use this material and do not have one, then return this material, unopened to: Rockland Inc., P.O. BOX 5199, Limerick, Pennsylvania, USA.