

Datasheet for 200-401-049

Carboxypeptidase B Antibody

Overview

Description:	Anti-Carboxypeptidase B (RABBIT) Antibody (BULK ORDER) - 200-401-049
Item No.:	200-401-049
Size:	50 mg
Applications:	ELISA, WB
Reactivity:	Pig
Host Species:	Rabbit

Product Details

Background:	Carboxypeptidase B is a carboxypeptidase that preferentially acts upon basic amino acids, such as arginine and lysine. This serum enzyme is also responsible for rapidly metabolizing the C5a protein into C5a des-Arg, with one less amino acid. Anti-CARBOXYPEPTIDASE B is ideal for investigators researching enzyme antibodies.
Synonyms:	rabbit anti-Carboxypeptidase B antibody, CarboxypeptidaseB1 antibody, CP B1 antibody, CPB 1 antibody, CPB antibody, CPB1 antibody, DKFZp779K1333 antibody, Pancreas specific protein antibody, Pancreatic carboxypeptidase B1 antibody
Host Species:	Rabbit
Clonality:	Polyclonal
Format:	IgG

Target Details

Gene Name:	CPB1
Reactivity:	Pig
Immunogen Type:	Native Protein
Immunogen:	Carboxypeptidase B [Porcine Pancreas]

Purity/Specificity: Anti-CARBOXYPEPTIDASE B is an IgG fraction antibody purified from monospecific antiserum by a multi-step process which includes delipidation, salt fractionation and ion exchange chromatography followed by extensive dialysis against the buffer stated above. Assay by immunoelectrophoresis resulted in a single precipitin arc against anti-Rabbit Serum as well as purified and partially purified Carboxypeptidase B [Porcine Pancreas]. Cross reactivity against Carboxypeptidase B from other tissues and species may occur but have not been specifically determined.

Relevant Links:

- [NCBI - NP_999334.1](#)
- [UniProtKB - P09955](#)
- [GeneID - 397341](#)

Application Details

Tested Applications:	ELISA, WB
Application Note:	Anti-Carboxypeptidase B antibody has been tested by ELISA and western blot and is suitable for Immunohistochemistry applications. Specific conditions for reactivity should be optimized by the end user.
Assay Dilutions:	All assays should be optimized by the user. Recommended dilutions (if any) may be listed below.
ELISA:	1:20,000 - 1:100,000
IHC:	1:1,000 - 1:5,000
WB:	1:2,000 - 1:10,000

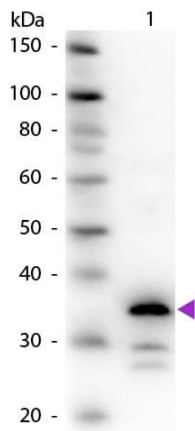
Formulation

Physical State:	Lyophilized
Concentration:	10.0 mg/mL by UV absorbance at 280 nm
Buffer:	0.02 M Potassium Phosphate, 0.15 M Sodium Chloride, pH 7.2
Preservative:	0.01% (w/v) Sodium Azide
Stabilizer:	None
Reconstitution Volume:	5.0 mL
Reconstitution Buffer:	Restore with deionized water (or equivalent)

Shipping & Handling

Shipping Condition:	Ambient
Storage Condition:	Store vial at 4° C prior to restoration. For extended storage aliquot contents and freeze at -20° C or below. Avoid cycles of freezing and thawing. Centrifuge product if not completely clear after standing at room temperature. This product is stable for several weeks at 4° C as an undiluted liquid. Dilute only prior to immediate use.
Expiration:	Expiration date is one (1) year from date of receipt.

Images



Western Blot

Western Blot of Rabbit Anti-Carboxypeptidase B antibody. Lane 1: Carboxypeptidase B. Lane 2: None. Load: 50 ng per lane. Primary antibody: Carboxypeptidase B primary antibody at 1:1,000 overnight at 4°C. Secondary antibody: Peroxidase rabbit secondary antibody at 1:40,000 for 30 min at RT. Blocking: MB-070 for 30 min at RT. Predicted/Observed size: 35 kDa, 35 kDa for Carboxypeptidase B. Other band(s): Carboxypeptidase B splice variants and isoforms.

References

- Zhang P et al. The PERK eukaryotic initiation factor 2 α kinase is required for the development of the skeletal system, postnatal growth, and the function and viability of the pancreas. *Mol Cell Biol.* (2002)

Disclaimer

This product is for research use only and is not intended for therapeutic or diagnostic applications. Please contact a technical service representative for more information. All products of animal origin manufactured by Rockland Immunochemicals are derived from starting materials of North American origin. Collection was performed in United States Department of Agriculture (USDA) inspected facilities and all materials have been inspected and certified to be free of disease and suitable for exportation. All properties listed are typical characteristics and are not specifications. All suggestions and data are offered in good faith but without guarantee as conditions and methods of use of our products are beyond our control. All claims must be made within 30 days following the date of delivery. The prospective user must determine the suitability of our materials before adopting them on a commercial scale. Suggested uses of our products are not recommendations to use our products in violation of any patent or as a license under any patent of Rockland Immunochemicals, Inc. If you require a commercial license to use this material and do not have one, then return this material, unopened to: Rockland Inc., P.O. BOX 5199, Limerick, Pennsylvania, USA.