

Datasheet for 200-401-046-0100

Alpha-1-Acid Glycoprotein Antibody

Overview

Description:	Anti-Alpha-1-Acid Glycoprotein (Human Plasma) (RABBIT) Antibody - 200-401-046-0100
Item No.:	200-401-046-0100
Size:	100 µg
Applications:	WB
Reactivity:	Human
Host Species:	Rabbit

Product Details

Background:	Anti-Alpha-1-Acid Glycoprotein Antibody detects Alpha-1-Acid Glycoprotein. A-1-Acid Glycoprotein is expressed by the liver and secreted in plasma. It functions as a transport protein in the blood stream. It binds various ligands in the interior of its beta-barrel domain. It binds synthetic drugs and influences their distribution and availability in the body. It appears to function in modulating the activity of the immune system during the acute-phase reaction. Anti-Alpha-1-Acid Glycoprotein Antibody is ideal for investigators involved in Cell Signaling, Neuroscience and Signal Transduction research.
Synonyms:	rabbit anti-Alpha-1-Acid Glycoprotein Antibody, AGP1, AGP 1, OMD 1, OMD1, Orosomuroid-1, agpa antibody, Alpha 1 agp antibody, Glycoprotein alpha acid of serum antibody
Host Species:	Rabbit
Clonality:	Polyclonal
Format:	IgG

Target Details

Gene Name:	ORM1
Reactivity:	Human
Immunogen Type:	Native Protein
Immunogen:	Anti-Alpha-1-Acid Glycoprotein Antibody was produced by repeated immunizations with human plasma a-1-Acid Glycoprotein.

Purity/Specificity: Alpha-1-Acid Glycoprotein Antibody is an IgG fraction antibody purified from monospecific antiserum by a multi-step process which includes delipidation, salt fractionation and ion exchange chromatography followed by extensive dialysis against the buffer stated above. Assay by immunoelectrophoresis resulted in a single precipitin arc against anti-Rabbit Serum as well as purified and partially purified a-1-Acid Glycoprotein (Human Plasma). Cross-reactivity against a-1-Acid Glycoprotein from other tissues and species may occur but has not been specifically determined.

Relevant Links:

- [UniProtKB - P02763](#)
- [NCBI - NP_000598.2](#)
- [GeneID - 5004](#)

Application Details

Tested Applications:	WB
Application Note:	Anti-Alpha-1-Acid Glycoprotein Antibody has been tested by western blot and is suitable for ELISA. Researchers should determine optimal titers for applications that are not stated below.
Assay Dilutions:	All assays should be optimized by the user. Recommended dilutions (if any) may be listed below.
ELISA:	1:135,000
IHC:	User Optimized
WB:	1:2,000 - 1:10,000

Formulation

Physical State:	Lyophilized
Concentration:	1.0 mg/ml by UV absorbance at 280 nm
Buffer:	0.02 M Potassium Phosphate, 0.15 M Sodium Chloride, pH 7.2
Preservative:	0.01% (w/v) Sodium Azide
Stabilizer:	None
Reconstitution Volume:	100 µL
Reconstitution Buffer:	Restore with deionized water (or equivalent)

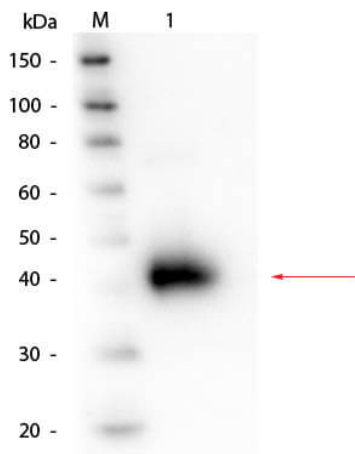
Shipping & Handling

Shipping Condition:	Ambient
----------------------------	---------

Storage Condition: Store vial at 4° C prior to restoration. For extended storage aliquot contents and freeze at -20° C or below. Avoid cycles of freezing and thawing. Centrifuge product if not completely clear after standing at room temperature. This product is stable for several weeks at 4° C as an undiluted liquid. Dilute only prior to immediate use.

Expiration: Expiration date is one (1) year from date of receipt.

Images



Western Blot

Western Blot of Alpha-1-Acid Glycoprotein (Human Plasma) Antibody. Lane 1: Alpha-1-Acid Glycoprotein (Human Plasma). Load: 50 ng. Primary antibody: Alpha-1-Acid Glycoprotein (Human Plasma) antibody at 1:1,000 overnight at 4°C. Secondary antibody: HRP conjugated rabbit secondary antibody at 1:40,000 for 30 min at RT. Block: MB-070 for 30 min at RT. Predicted/Observed size: Predicted at 24 kDa/Observed - 40 kDa; protein migrates at 40 kDa.

Disclaimer

This product is for research use only and is not intended for therapeutic or diagnostic applications. Please contact a technical service representative for more information. All products of animal origin manufactured by Rockland Immunochemicals are derived from starting materials of North American origin. Collection was performed in United States Department of Agriculture (USDA) inspected facilities and all materials have been inspected and certified to be free of disease and suitable for exportation. All properties listed are typical characteristics and are not specifications. All suggestions and data are offered in good faith but without guarantee as conditions and methods of use of our products are beyond our control. All claims must be made within 30 days following the date of delivery. The prospective user must determine the suitability of our materials before adopting them on a commercial scale. Suggested uses of our products are not recommendations to use our products in violation of any patent or as a license under any patent of Rockland Immunochemicals, Inc. If you require a commercial license to use this material and do not have one, then return this material, unopened to: Rockland Inc., P.O. BOX 5199, Limerick, Pennsylvania, USA.