

Datasheet for 200-345-GQ2S

MEK2 C-Term Antibody DyLight™ 800**Overview**

Description:	Anti-MEK2 (MOUSE) Monoclonal Antibody DyLight™ 800 Conjugated - 200-345-GQ2S
Item No.:	200-345-GQ2S
Size:	25 µL
Reactivity:	Human, Mouse, Rat
Host Species:	Mouse

Product Details

Background:	MEK2 antibodies detect the MEK2 isoform. Mitogen-activated protein kinase kinase 2, also known as MEK2 or MKK2, is an integral component of the MAP kinase cascade that regulates cell growth and differentiation. This pathway also plays a key role in synaptic plasticity in the brain. Activated MEK 2 acts as a dual specificity kinase phosphorylating both a threonine and a tyrosine residue on MAP kinase. MEK1 and MEK2 are about 80% identical to each other, and nearly identical within the kinase domain. This antibody does not react with MEK1. The MEK2 antibody is ideal for investigators involved in Neuroscience, Cell Signaling and Cancer Research.
Synonyms:	mouse anti-MEK2 Antibody DyLight™800 conjugation, DyLight™800 conjugated mouse anti-MEK2 Antibody, MAP2K2, MEK, MEK 2, MKK2, PRKMK2, CFC4, MEK-2 Antibody
Host Species:	Mouse
Conjugate:	DyLight™ 800
Clonality:	Monoclonal
Clone ID:	12A6.G1.G11
Format:	IgG
F/P Ratio:	3

Target Details

Gene Name:	MAP2K2
Reactivity:	Human, Mouse, Rat
Immunogen Type:	Conjugated Peptide

Immunogen:	Anti-MEK2 Monoclonal Antibody was produced in mice by repeated immunizations with synthetic peptide corresponding to amino acid residues near the C-terminus conjugated to KLH.
Purity/Specificity:	This DyLight™800 protein A purified mouse monoclonal antibody reacts specifically with human MEK2. Anti-MEK2 is purified from tissue culture supernatant by protein A purification. Cross reactivity is expected to occur with human, mouse, and rat based on sequence identity of the peptide immunogen. This antibody does not react with the MEK1 isoform.
Relevant Links:	<ul style="list-style-type: none">• UniProtKB - P36507

Application Details

Application Note:	Anti-MEK 2 DyLight™800 Conjugated (MOUSE) Antibody is suitable for use in Western Blotting and ELISA. Specific conditions of reactivity should be optimized by the end user. Expect a band of approximately 44 kDa.
Assay Dilutions:	All assays should be optimized by the user. Recommended dilutions (if any) may be listed below.
ELISA:	1:40,000
WB:	1µg/mL

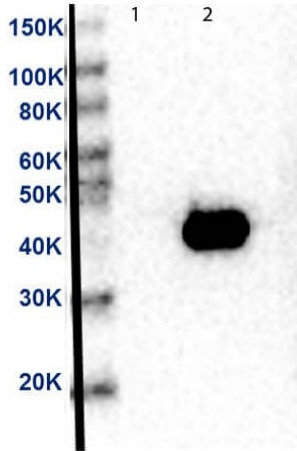
Formulation

Physical State:	Liquid (sterile filtered)
Concentration:	1.0 mg/mL by UV absorbance at 280 nm
Buffer:	0.02 M Potassium Phosphate, 0.15 M Sodium Chloride, pH 7.2
Preservative:	0.01% (w/v) Sodium Azide
Stabilizer:	10 mg/mL Bovine Serum Albumin (BSA) - Immunoglobulin and Protease free

Shipping & Handling

Shipping Condition:	Dry Ice
Storage Condition:	Store vial at -20° C or below prior to opening. This vial contains a relatively low volume of reagent (25 µL). To minimize loss of volume dilute 1:10 by adding 225 µL of the buffer stated above directly to the vial. Recap, mix thoroughly and briefly centrifuge to collect the volume at the bottom of the vial. Use this intermediate dilution when calculating final dilutions as recommended below. Store the vial at -20°C or below after dilution. Avoid cycles of freezing and thawing.
Expiration:	Expiration date is one (1) year from date of receipt.

Images



Western Blot

Western Blot of Anti-MEK2 Antibody. Lane 1: MEK-1 recombinant protein. Lane 2: MEK-2 recombinant protein. Load: 50ng per lane. Primary Antibody: Anti-MEK2 supernatant clone neat over night at 4°C. Secondary Antibody: Anti-mouse HRP at 1:40,000 dilution.

Disclaimer

This product is for research use only and is not intended for therapeutic or diagnostic applications. Please contact a technical service representative for more information. All products of animal origin manufactured by Rockland Immunochemicals are derived from starting materials of North American origin. Collection was performed in United States Department of Agriculture (USDA) inspected facilities and all materials have been inspected and certified to be free of disease and suitable for exportation. All properties listed are typical characteristics and are not specifications. All suggestions and data are offered in good faith but without guarantee as conditions and methods of use of our products are beyond our control. All claims must be made within 30 days following the date of delivery. The prospective user must determine the suitability of our materials before adopting them on a commercial scale. Suggested uses of our products are not recommendations to use our products in violation of any patent or as a license under any patent of Rockland Immunochemicals, Inc. If you require a commercial license to use this material and do not have one, then return this material, unopened to: Rockland Inc., P.O. BOX 5199, Limerick, Pennsylvania, USA.