

Datasheet for 200-326-N75

CD86 Allophycocyanin Antibody

Overview

Description:	Anti-CD86 (MOUSE) Allophycocyanin Conjugated Monoclonal Antibody - 200-326-N75
Item No.:	200-326-N75
Size:	500 µL
Applications:	FC
Reactivity:	Human
Host Species:	Mouse

Product Details

Background:	CD86 is an 80 kD immunoglobulin superfamily member also known as B7-2, B70, and Ly-58. CD86 is expressed on activated B and T cells, monocytes/macrophages, dendritic cells, and astrocytes. CD86, along with CD80, is the ligand of CD28 and CD152 (CTLA-4). CD86 is expressed earlier in the immune response than CD80. CD86 has also been shown to be involved in immunoglobulin class-switching and triggering of NK cell-mediated cytotoxicity. CD86 binds to CD28 to transduce costimulatory signals for T cell activation, proliferation, and cytokine production. CD86 can also bind to CD152, also known as CTLA-4, to deliver an inhibitory signal to T cells.
Synonyms:	T-lymphocyte activation antigen CD86, Activation B7-2 antigen, B70, BU63, CTLA-4 counter-receptor B7.2, FUN-1, CD86, CD28LG2
Host Species:	Mouse
Conjugate:	Allophycocyanine (APC)
Clonality:	Monoclonal
Clone ID:	IT2.2
Format:	IgG2b
F/P Ratio:	1-2

Target Details

Gene Name:	CD86
-------------------	------

Reactivity:	Human
Immunogen:	Anti-CD86 Antibody (Monoclonal) was produced by repeated immunizations with CD86 antigen.
Purity/Specificity:	Allophycocyanin conjugated CD86 Monoclonal Antibody was purified from tissue culture supernatant via affinity chromatography and is directed against human CD86. Reactivity is observed against human CD86. Cross reactivity is observed with Baboon, Capuchin Monkey, Common Marmoset, Cotton-topped Tamarin, Chimpanzee, Cynomolgus, and Rhesus . Reactivity with CD86 from other sources has not been tested. Anti-CD86 is conjugated with APC under optimal conditions and the solution is free of unconjugated APC.
Relevant Links:	<ul style="list-style-type: none">• UniProtKB - P42081• NCBI - NP_001193853.1• GeneID - 942

Application Details

Tested Applications:	FC
Application Note:	Anti-CD86 is tested for Flow Cytometry and useful in Immunohistochemistry and Western Blot. Researchers should determine optimal titers for applications that are not stated.
Assay Dilutions:	All assays should be optimized by the user. Recommended dilutions (if any) may be listed below.
FC:	5 uL/test/1x10e5 to 1x10e8 cells
IHC:	User Optimized
WB:	User Optimized

Formulation

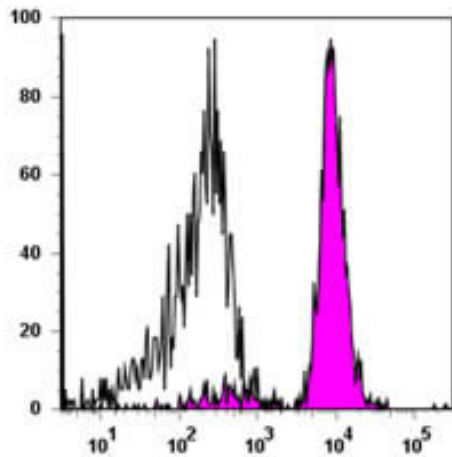
Physical State:	Liquid (sterile filtered)
Buffer:	0.02 M Potassium Phosphate, 0.15 M Sodium Chloride, pH 7.2
Preservative:	0.09% (w/v) Sodium Azide
Stabilizer:	0.2% BSA (w/v)

Shipping & Handling

Shipping Condition:	Wet Ice
----------------------------	---------

Storage Condition:	Store vial at 4° C prior to opening. Dilute only prior to immediate use. This product is stable at 4° C as an undiluted liquid. Use subdued lighting during handling and incubation of cells prior to analysis. Store reagent in the dark. DO NOT FREEZE.
Expiration:	Expiration date is six (6) months from date of receipt.

Images



Flow Cytometry

Flow Cytometry of Mouse anti-CD86 Allophycocyanin Conjugated Monoclonal Antibody. Cells: Human peripheral blood monocytes. Stimulation: none. Antibody: (Black) APC Mouse IgG2b isotype control; (Purple Filled) Allophycocyanin Anti-CD86 mouse antibody using 5 ul.

Disclaimer

This product is for research use only and is not intended for therapeutic or diagnostic applications. Please contact a technical service representative for more information. All products of animal origin manufactured by Rockland Immunochemicals are derived from starting materials of North American origin. Collection was performed in United States Department of Agriculture (USDA) inspected facilities and all materials have been inspected and certified to be free of disease and suitable for exportation. All properties listed are typical characteristics and are not specifications. All suggestions and data are offered in good faith but without guarantee as conditions and methods of use of our products are beyond our control. All claims must be made within 30 days following the date of delivery. The prospective user must determine the suitability of our materials before adopting them on a commercial scale. Suggested uses of our products are not recommendations to use our products in violation of any patent or as a license under any patent of Rockland Immunochemicals, Inc. If you require a commercial license to use this material and do not have one, then return this material, unopened to: Rockland Inc., P.O. BOX 5199, Limerick, Pennsylvania, USA.