

Datasheet for 200-326-N74

CD80 Allophycocyanin Antibody

Overview

| | |
|----------------------|--|
| Description: | Anti-CD80 (MOUSE) Allophycocyanin Conjugated Monoclonal Antibody - 200-326-N74 |
| Item No.: | 200-326-N74 |
| Size: | 500 µL |
| Applications: | FC |
| Reactivity: | Human |
| Host Species: | Mouse |

Product Details

| | |
|----------------------|---|
| Background: | CD80, also known as B7-1, B7, and BB1, is a 60 kD single chain type I glycoprotein belonging to the immunoglobulin superfamily. CD80 is expressed on activated B and T cells, macrophages, and dendritic cells. CD80 binds to CD28 and CD152 (CTLA-4). Along with CD86, CD80 plays a critical role in regulation of T cell activation. The interaction of CD80 with CD28 provides a potent costimulatory signal for T cell activation through the CD3 complex, while its interaction with CTLA-4 provides an inhibitory signal for T cell activation. |
| Synonyms: | T-lymphocyte activation antigen CD80, Activation B7-1 antigen, BB1, CTLA-4 counter-receptor B7.1, B7, CD80, CD28LG, CD28LG1, LAB7 |
| Host Species: | Mouse |
| Conjugate: | Allophycocyanine (APC) |
| Clonality: | Monoclonal |
| Clone ID: | 2D10 |
| Format: | IgG1 |
| F/P Ratio: | 1-2 |

Target Details

| | |
|--------------------|-------|
| Gene Name: | CD80 |
| Reactivity: | Human |

| | |
|----------------------------|--|
| Immunogen: | Anti-CD80 Antibody (Monoclonal) was produced by repeated immunizations with CD80 antigen. |
| Purity/Specificity: | Allophycocyanin conjugated CD80 Monoclonal Antibody was purified from tissue culture supernatant via affinity chromatography and is directed against human CD80. Reactivity is observed against human CD80. Cross reactivity is observed with Rhesus. Reactivity with CD80 from other sources has not been tested. Anti-CD80 is conjugated with APC under optimal conditions and the solution is free of unconjugated APC. |
| Relevant Links: | <ul style="list-style-type: none">• UniProtKB - P33681• NCBI - NP_005182.1• GenelD - 941 |

Application Details

| | |
|-----------------------------|---|
| Tested Applications: | FC |
| Application Note: | Anti-CD80 is tested for Flow Cytometry and useful in Immunohistochemistry and Western Blot. Researchers should determine optimal titers for applications that are not stated. |
| Assay Dilutions: | All assays should be optimized by the user. Recommended dilutions (if any) may be listed below. |
| FC: | 5 uL/test/1x10e5 to 1x10e8 cells |
| IHC: | User Optimized |
| WB: | User Optimized |

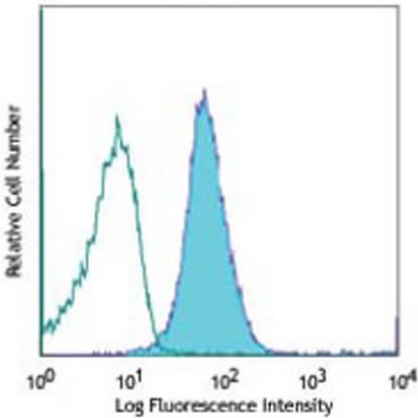
Formulation

| | |
|------------------------|--|
| Physical State: | Liquid (sterile filtered) |
| Buffer: | 0.02 M Potassium Phosphate, 0.15 M Sodium Chloride, pH 7.2 |
| Preservative: | 0.09% (w/v) Sodium Azide |
| Stabilizer: | 0.2% BSA (w/v) |

Shipping & Handling

| | |
|----------------------------|---|
| Shipping Condition: | Wet Ice |
| Storage Condition: | Store vial at 4° C prior to opening. Dilute only prior to immediate use. This product is stable at 4° C as an undiluted liquid. Use subdued lighting during handling and incubation of cells prior to analysis. Store reagent in the dark. DO NOT FREEZE. |
| Expiration: | Expiration date is six (6) months from date of receipt. |

Images



Flow Cytometry

Flow Cytometry of Mouse anti-CD80 Allophycocyanin Conjugated Monoclonal Antibody. Cells: Human B-cell Burkitt's lymphoma cell line Daudi. Stimulation: none. Antibody: (Unfilled Blue Line) Allophycocyanin Mouse IgG1 isotype control; (Filled Blue) Allophycocyanin Anti-CD80 mouse antibody using 5 μ L.

Disclaimer

This product is for research use only and is not intended for therapeutic or diagnostic applications. Please contact a technical service representative for more information. All products of animal origin manufactured by Rockland Immunochemicals are derived from starting materials of North American origin. Collection was performed in United States Department of Agriculture (USDA) inspected facilities and all materials have been inspected and certified to be free of disease and suitable for exportation. All properties listed are typical characteristics and are not specifications. All suggestions and data are offered in good faith but without guarantee as conditions and methods of use of our products are beyond our control. All claims must be made within 30 days following the date of delivery. The prospective user must determine the suitability of our materials before adopting them on a commercial scale. Suggested uses of our products are not recommendations to use our products in violation of any patent or as a license under any patent of Rockland Immunochemicals, Inc. If you require a commercial license to use this material and do not have one, then return this material, unopened to: Rockland Inc., P.O. BOX 5199, Limerick, Pennsylvania, USA.