

Datasheet for 200-326-N67

CD40 Allophycocyanin Antibody

Overview

Description:	Anti-CD40 (MOUSE) Allophycocyanin Conjugated Monoclonal Antibody - 200-326-N67
Item No.:	200-326-N67
Size:	500 µL
Applications:	FC
Reactivity:	Human
Host Species:	Mouse

Product Details

Background:	CD40 is a 48 kD type I glycoprotein also known as BP50. It is a member of the TNFR superfamily primarily expressed on B cells, macrophages, follicular dendritic cells, endothelial cells, fibroblasts, and at low levels on plasma cells. CD40 has been reported to be involved in B cell differentiation, costimulation, isotype class-switching, and protection of B cells from apoptosis. Additionally, CD40 is important for T cell-B cell interactions. The ligand of CD40 is CD154 (CD40 ligand). The 5C3 antibody has been reported to promote B cell proliferation in the presence of anti-IgM, IL-4 or PMA, partially blocking CD40 binding to CD40L, and B cells rescue from apoptosis.
Synonyms:	BP50, TNFRSF5, Tumor necrosis factor receptor superfamily member 5, B-cell surface antigen CD40, Bp50, CD40L receptor, CDw40
Host Species:	Mouse
Conjugate:	Allophycocyanine (APC)
Clonality:	Monoclonal
Clone ID:	5C3
Format:	IgG1
F/P Ratio:	1-2

Target Details

Gene Name:	CD40
-------------------	------

Reactivity:	Human
Immunogen:	Anti-CD40 Antibody (Monoclonal) was produced by repeated immunizations with CD40 antigen.
Purity/Specificity:	Allophycocyanin conjugated CD40 Monoclonal Antibody was purified from tissue culture supernatant via affinity chromatography and is directed against human CD40. Reactivity is observed against human CD40. Cross reactivity is observed with Baboon, Chimpanzee, Cynomolgus Monkey, Rhesus, and Squirrel Monkey. Reactivity with CD40 from other sources has not been tested. Anti-CD40 is conjugated with APC under optimal conditions and the solution is free of unconjugated APC.
Relevant Links:	<ul style="list-style-type: none">• UniProtKB - P25942• NCBI - NP_001241.1• GeneID - 958

Application Details

Tested Applications:	FC
Application Note:	Anti-CD40 is tested for Flow Cytometry. Researchers should determine optimal titers for applications that are not stated.
Assay Dilutions:	All assays should be optimized by the user. Recommended dilutions (if any) may be listed below.
FC:	5 uL/test/1x10e5 to 1x10e8 cells

Formulation

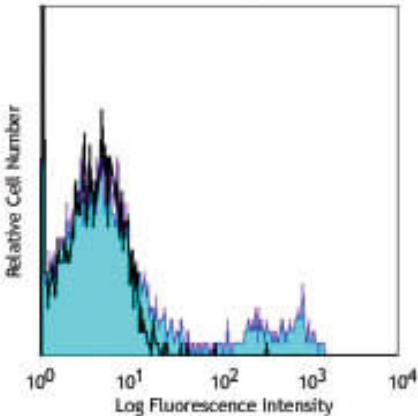
Physical State:	Liquid (sterile filtered)
Concentration:	sufficient to run 100 tests Sufficient to run approximately 100 tests
Buffer:	0.02 M Potassium Phosphate, 0.15 M Sodium Chloride, pH 7.2
Preservative:	0.09% (w/v) Sodium Azide
Stabilizer:	0.2% BSA (w/v)

Shipping & Handling

Shipping Condition:	Wet Ice
Storage Condition:	Store vial at 4° C prior to opening. Dilute only prior to immediate use. This product is stable at 4° C as an undiluted liquid. Use subdued lighting during handling and incubation of cells prior to analysis. Store reagent in the dark. DO NOT FREEZE.

Expiration: Expiration date is six (6) months from date of receipt.

Images



Flow Cytometry

Flow Cytometry of Mouse anti-CD40 Allophycocyanin Conjugated Monoclonal Antibody. Cells: human peripheral blood lymphocytes. Stimulation: none. Antibody: (Black) APC Mouse IgG1 isotype control; (Blue) Allophycocyanin Anti-CD40 mouse antibody using 5 μ l.

Disclaimer

This product is for research use only and is not intended for therapeutic or diagnostic applications. Please contact a technical service representative for more information. All products of animal origin manufactured by Rockland Immunochemicals are derived from starting materials of North American origin. Collection was performed in United States Department of Agriculture (USDA) inspected facilities and all materials have been inspected and certified to be free of disease and suitable for exportation. All properties listed are typical characteristics and are not specifications. All suggestions and data are offered in good faith but without guarantee as conditions and methods of use of our products are beyond our control. All claims must be made within 30 days following the date of delivery. The prospective user must determine the suitability of our materials before adopting them on a commercial scale. Suggested uses of our products are not recommendations to use our products in violation of any patent or as a license under any patent of Rockland Immunochemicals, Inc. If you require a commercial license to use this material and do not have one, then return this material, unopened to: Rockland Inc., P.O. BOX 5199, Limerick, Pennsylvania, USA.