

## Datasheet for 200-326-N24

## CD19 Allophycocyanin Antibody

### Overview

<b>Description:</b>	Anti-CD19 (MOUSE) Allophycocyanin Conjugated Monoclonal Antibody - 200-326-N24
<b>Item No.:</b>	200-326-N24
<b>Size:</b>	500 µL
<b>Applications:</b>	FC
<b>Reactivity:</b>	Human
<b>Host Species:</b>	Mouse

### Product Details

<b>Background:</b>	The HIB19 antibody reacts with human CD19, 95 kDa glycoprotein which acts as a co-receptor, along with CD21, CD81 and CD225, in support of the functional B cell receptor (BCR). This complex provides antigen-specific recognition and subsequent activation of B cells to proliferate and differentiate into antibody-secreting cells (plasma cells) or memory B cells, which are crucial for secondary antigen encounter. CD19 is a lineage-differentiation marker, as its expression is detectable at the earliest B cell stages, through development, and is finally lost upon transition to mature plasma cells. The HIB19 antibody is widely used as a phenotypic marker for CD19 expression on B cells, as well as on dendritic cell subsets.
<b>Synonyms:</b>	B-lymphocyte antigen CD19, B-lymphocyte surface antigen B4, Differentiation antigen CD19, T-cell surface antigen Leu-12, CD19
<b>Host Species:</b>	Mouse
<b>Conjugate:</b>	Allophycocyanine (APC)
<b>Clonality:</b>	Monoclonal
<b>Clone ID:</b>	HIB19
<b>Format:</b>	IgG1
<b>F/P Ratio:</b>	1-2

### Target Details

<b>Gene Name:</b>	CD19
-------------------	------

<b>Reactivity:</b>	Human
<b>Immunogen:</b>	Anti-CD19 Antibody (Monoclonal) was produced by repeated immunizations with CD19 antigen.
<b>Purity/Specificity:</b>	Allophycocyanin conjugated CD19 Monoclonal Antibody was purified from tissue culture supernatant via affinity chromatography and is directed against human CD19. Reactivity is observed against human CD19. Cross reactivity with CD19 from other sources has not been tested. Anti-CD19 is conjugated with APC under optimal conditions and the solution is free of unconjugated APC.
<b>Relevant Links:</b>	<ul style="list-style-type: none"><li>• <a href="#">UniProtKB - P15391</a></li><li>• <a href="#">NCBI - NP_001171569.1</a></li><li>• <a href="#">GeneID - 930</a></li></ul>

## Application Details

<b>Tested Applications:</b>	FC
<b>Application Note:</b>	Anti-CD19 is tested for Flow Cytometry and useful in Immunohistochemistry. Researchers should determine optimal titers for applications that are not stated.
<b>Assay Dilutions:</b>	All assays should be optimized by the user. Recommended dilutions (if any) may be listed below.
<b>FC:</b>	5µL/test/1x10e5 to 1x10e8 cells
<b>IHC:</b>	User Optimized

## Formulation

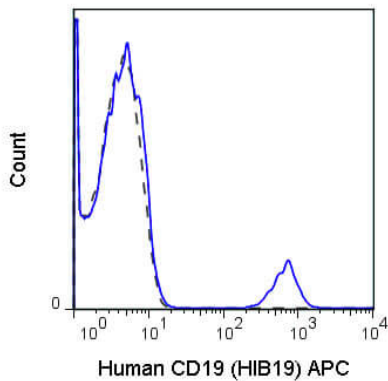
<b>Physical State:</b>	Liquid (sterile filtered)
<b>Concentration:</b>	0.025 mg/mL Sufficient to run approximately 100 tests
<b>Buffer:</b>	0.01 M Sodium Phosphate, 0.15 M Sodium Chloride, pH 7.2
<b>Preservative:</b>	None
<b>Stabilizer:</b>	0.1% Gelatin

## Shipping & Handling

<b>Shipping Condition:</b>	Wet Ice
<b>Storage Condition:</b>	Store vial at 4° C prior to opening. Dilute only prior to immediate use. This product is stable at 4° C as an undiluted liquid. Use subdued lighting during handling and incubation of cells prior to analysis. Store reagent in the dark. DO NOT FREEZE.

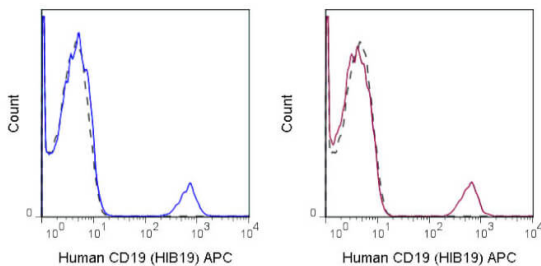
**Expiration:** Expiration date is six (6) months from date of receipt.

## Images



### Flow Cytometry

Flow Cytometry of Mouse anti-CD19 Allophycocyanin Conjugated Monoclonal Antibody. Cells: human peripheral blood lymphocytes. Stimulation: none. Antibody: (Dotted Line) 0.25  $\mu$ g APC Mouse IgG1 isotype control; (BLUE) Allophycocyanin Anti-CD19 mouse antibody using 5  $\mu$ l (0.25  $\mu$ g).



### Flow Cytometry

Flow Cytometry of Mouse anti-CD19 Allophycocyanin Conjugated Monoclonal Antibody. Cells: human peripheral blood lymphocytes. Stimulation: none. Antibody: (Dotted Line) 0.125  $\mu$ g APC Mouse IgG1 isotype control; (BLUE) Allophycocyanin Anti-CD19 mouse antibody; (RED) Allophycocyanin Anti-CD19 mouse antibody using 5  $\mu$ l (0.125  $\mu$ g).

## Disclaimer

This product is for research use only and is not intended for therapeutic or diagnostic applications. Please contact a technical service representative for more information. All products of animal origin manufactured by Rockland Immunochemicals are derived from starting materials of North American origin. Collection was performed in United States Department of Agriculture (USDA) inspected facilities and all materials have been inspected and certified to be free of disease and suitable for exportation. All properties listed are typical characteristics and are not specifications. All suggestions and data are offered in good faith but without guarantee as conditions and methods of use of our products are beyond our control. All claims must be made within 30 days following the date of delivery. The prospective user must determine the suitability of our materials before adopting them on a commercial scale. Suggested uses of our products are not recommendations to use our products in violation of any patent or as a license under any patent of Rockland Immunochemicals, Inc. If you require a commercial license to use this material and do not have one, then return this material, unopened to: Rockland Inc., P.O. BOX 5199, Limerick, Pennsylvania, USA.