

## Datasheet for 200-308-N72

**CD62L Phycoerythrin Antibody****Overview**

<b>Description:</b>	Anti-CD62L (MOUSE) Phycoerythrin Conjugated Monoclonal Antibody - 200-308-N72
<b>Item No.:</b>	200-308-N72
<b>Size:</b>	500 µL
<b>Applications:</b>	FC
<b>Reactivity:</b>	Human
<b>Host Species:</b>	Mouse

**Product Details**

<b>Background:</b>	CD62L is a 74-95 kD single chain type I glycoprotein referred to as L-selectin or LECAM-1. It is expressed on most peripheral blood B cells, subsets of T and NK cells, monocytes, granulocytes, and certain hematopoietic malignant cells. CD62L binds to carbohydrates present on certain glycoforms of CD34, glycam-1, and MAdCAM-1 and with a low affinity to anionic oligosaccharide sequences related to sialylated Lewis X (sLex, CD15s) through its C-type lectin domain. CD62L is important for the homing of naïve lymphocytes to high endothelial venules in peripheral lymph nodes and Peyer's patches. It also plays a role in leukocyte rolling on activated endothelial cells.
<b>Synonyms:</b>	L-selectin, CD62 antigen-like family member L, Leukocyte adhesion molecule 1, LAM-1, Leukocyte surface antigen Leu-8, Leukocyte-endothelial cell adhesion molecule 1, LECAM1, Lymph node homing receptor, TQ1, gp90-MEL, CD62L , SELL , LNHR, LYAM1
<b>Host Species:</b>	Mouse
<b>Conjugate:</b>	R-Phycoerythrin (RPE)
<b>Clonality:</b>	Monoclonal
<b>Clone ID:</b>	DREG-56
<b>Format:</b>	IgG1
<b>F/P Ratio:</b>	1-2

**Target Details**

<b>Gene Name:</b>	SELL
-------------------	------

<b>Reactivity:</b>	Human
<b>Immunogen:</b>	Anti-CD62L Antibody (Monoclonal) was produced by repeated immunizations with CD62L antigen.
<b>Purity/Specificity:</b>	Phycoerythrin conjugated CD62L Monoclonal Antibody was purified from tissue culture supernatant via affinity chromatography and is directed against human CD62L. Reactivity is observed against human CD62L. Cross reactivity is observed with Chimpanzee and bovine. Reactivity with CD62L from other sources has not been tested. Anti-CD62L is conjugated with PE under optimal conditions and the solution is free of unconjugated PE.
<b>Relevant Links:</b>	<ul style="list-style-type: none"><li>• <a href="#">UniProtKB - P14151</a></li><li>• <a href="#">NCBI - NP_000646.2</a></li><li>• <a href="#">GeneID - 6402</a></li></ul>

## Application Details

<b>Tested Applications:</b>	FC
<b>Application Note:</b>	Anti-CD62L is tested for Flow Cytometry and useful in Western Blot. Researchers should determine optimal titers for applications that are not stated.
<b>Assay Dilutions:</b>	All assays should be optimized by the user. Recommended dilutions (if any) may be listed below.
<b>FC:</b>	5 uL/test/1x10e5 to 1x10e8 cells
<b>WB:</b>	User Optimized

## Formulation

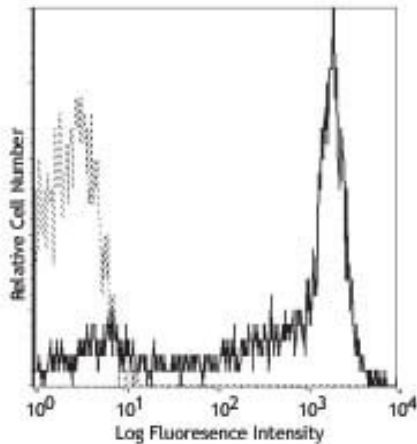
<b>Physical State:</b>	Liquid (sterile filtered)
<b>Buffer:</b>	0.02 M Potassium Phosphate, 0.15 M Sodium Chloride, pH 7.2
<b>Preservative:</b>	0.09% (w/v) Sodium Azide
<b>Stabilizer:</b>	0.2% BSA (w/v)

## Shipping & Handling

<b>Shipping Condition:</b>	Wet Ice
<b>Storage Condition:</b>	Store vial at 4° C prior to opening. Dilute only prior to immediate use. This product is stable at 4° C as an undiluted liquid. Use subdued lighting during handling and incubation of cells prior to analysis. Store reagent in the dark. DO NOT FREEZE.

**Expiration:** Expiration date is six (6) months from date of receipt.

## Images



### Flow Cytometry

Flow Cytometry of Mouse anti-CD62L Phycoerythrin Conjugated Monoclonal Antibody. Cells: Human peripheral blood lymphocytes. Stimulation: none. Antibody: (Grey Dotted Line) PE Mouse IgG1 isotype control; (Black) Phycoerythrin Anti-CD62L mouse antibody using 5  $\mu$ l.

## Disclaimer

This product is for research use only and is not intended for therapeutic or diagnostic applications. Please contact a technical service representative for more information. All products of animal origin manufactured by Rockland Immunochemicals are derived from starting materials of North American origin. Collection was performed in United States Department of Agriculture (USDA) inspected facilities and all materials have been inspected and certified to be free of disease and suitable for exportation. All properties listed are typical characteristics and are not specifications. All suggestions and data are offered in good faith but without guarantee as conditions and methods of use of our products are beyond our control. All claims must be made within 30 days following the date of delivery. The prospective user must determine the suitability of our materials before adopting them on a commercial scale. Suggested uses of our products are not recommendations to use our products in violation of any patent or as a license under any patent of Rockland Immunochemicals, Inc. If you require a commercial license to use this material and do not have one, then return this material, unopened to: Rockland Inc., P.O. BOX 5199, Limerick, Pennsylvania, USA.