

Datasheet for 200-308-N71

CD45RO Phycoerythrin Antibody**Overview**

Description:	Anti-CD45RO (MOUSE) Phycoerythrin Conjugated Monoclonal Antibody - 200-308-N71
Item No.:	200-308-N71
Size:	500 µL
Applications:	FC
Reactivity:	Human
Host Species:	Mouse

Product Details

Background:	The UCHL1 antibody reacts with the human CD45 isoform known as CD45RO, a protein tyrosine phosphatase of 220 kDa. CD45 is one of the most abundant hematopoietic markers, and is expressed on all leukocytes (the Leukocyte Common Antigen, LCA). Various isoforms are generated and expressed in cell-specific patterns. With their broad cell distribution, CD45 isoforms are critical for many leukocyte functions, regulating signal transduction and cell activation associated with the T cell receptor, B cell receptor, and IL-2 receptor. Other forms of CD45, with restricted cellular expression, include CD45R (B220), CD45RA, CD45RB, and others. The UCHL1 antibody is widely used as a marker for human CD45RO expression on thymocytes, activated memory T cells, monocytes, macrophages and granulocytes. The antibody is reported to be cross-reactive for Chimpanzee CD45RO.
Synonyms:	Receptor-type tyrosine-protein phosphatase C, Leukocyte common antigen, PTPRC , CD45
Host Species:	Mouse
Conjugate:	R-Phycoerythrin (RPE)
Clonality:	Monoclonal
Clone ID:	UCHL1
Format:	IgG2a
F/P Ratio:	1-2

Target Details

Gene Name:	PTPRC
-------------------	-------

Reactivity:	Human
Immunogen:	Anti-CD45RO Antibody (Monoclonal) was produced by repeated immunizations with CD45RO antigen.
Purity/Specificity:	Phycoerythrin conjugated CD45RO Monoclonal Antibody was purified from tissue culture supernatant via affinity chromatography and is directed against human CD45RO. Reactivity is observed against human CD45RO. Cross reactivity is observed with Chimpanzee. Reactivity with CD45RO from other sources has not been tested. Anti-CD45RO is conjugated with PE under optimal conditions and the solution is free of unconjugated PE.
Relevant Links:	<ul style="list-style-type: none">• UniProtKB - P08575• NCBI - NP_002829.3• GeneID - 5788

Application Details

Tested Applications:	FC
Application Note:	Anti-CD45RO is tested for Flow Cytometry and is useful for Immunoprecipitation, Immunohistochemistry, Immunofluorescence, and Western Blot. Researchers should determine optimal titers for applications that are not stated.
Assay Dilutions:	All assays should be optimized by the user. Recommended dilutions (if any) may be listed below.
FC:	5 uL/test/1x10e5 to 1x10e8 cells
IF:	User Optimized
IHC:	User Optimized
IP:	User Optimized
WB:	User Optimized

Formulation

Physical State:	Liquid (sterile filtered)
Concentration:	0.1 mg/mL Sufficient to run approximately 100 tests
Buffer:	0.01 M Sodium Phosphate, 0.15 M Sodium Chloride, pH 7.2
Preservative:	0.09% (w/v) Sodium Azide
Stabilizer:	0.1% Gelatin

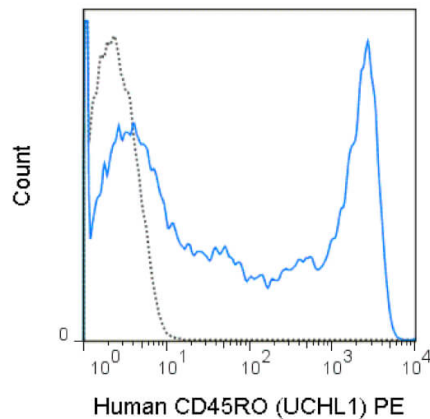
Shipping & Handling

Shipping Condition: Wet Ice

Storage Condition: Store vial at 4° C prior to opening. Dilute only prior to immediate use. This product is stable at 4° C as an undiluted liquid. Use subdued lighting during handling and incubation of cells prior to analysis. Store reagent in the dark. DO NOT FREEZE.

Expiration: Expiration date is six (6) months from date of receipt.

Images



Flow Cytometry

Flow Cytometry of Mouse anti-CD45RA Phycoerythrin Conjugated Monoclonal Antibody. Cells: Human peripheral blood lymphocytes. Stimulation: none. Antibody: (Black Line) PE Mouse IgG2a isotype control; (Purple Shaded) Phycoerythrin Anti-CD45RA mouse antibody using 5 ul.

Disclaimer

This product is for research use only and is not intended for therapeutic or diagnostic applications. Please contact a technical service representative for more information. All products of animal origin manufactured by Rockland Immunochemicals are derived from starting materials of North American origin. Collection was performed in United States Department of Agriculture (USDA) inspected facilities and all materials have been inspected and certified to be free of disease and suitable for exportation. All properties listed are typical characteristics and are not specifications. All suggestions and data are offered in good faith but without guarantee as conditions and methods of use of our products are beyond our control. All claims must be made within 30 days following the date of delivery. The prospective user must determine the suitability of our materials before adopting them on a commercial scale. Suggested uses of our products are not recommendations to use our products in violation of any patent or as a license under any patent of Rockland Immunochemicals, Inc. If you require a commercial license to use this material and do not have one, then return this material, unopened to: Rockland Inc., P.O. BOX 5199, Limerick, Pennsylvania, USA.