

Datasheet for 200-308-N63

CD11c Phycoerythrin Antibody**Overview**

| | |
|----------------------|---|
| Description: | Anti-CD11c (MOUSE) Phycoerythrin Conjugated Monoclonal Antibody - 200-308-N63 |
| Item No.: | 200-308-N63 |
| Size: | 500 µL |
| Applications: | FC |
| Reactivity: | Human |
| Host Species: | Mouse |

Product Details

| | |
|----------------------|--|
| Background: | The 3.9 antibody is widely used as a marker for CD11c expression on dendritic cells (DC), often in parallel with markers for CD11b, for identification of developmental stages and mature subsets of this cell type. CD11c is prominently expressed on tissue macrophages, and is also detected on activated neutrophils, granulocytes, some types of activated T cells and intestinal intraepithelial lymphocytes (IEL).L killing through its interactions with fibrinogen, CD54, and iC3b. |
| Synonyms: | Integrin alpha-X, CD11 antigen-like family member C, Leu M5, Leukocyte adhesion glycoprotein p150,95 alpha chain, Leukocyte adhesion receptor p150 95, CD11c |
| Host Species: | Mouse |
| Conjugate: | R-Phycoerythrin (RPE) |
| Clonality: | Monoclonal |
| Clone ID: | 3.9 |
| Format: | IgG1 |
| F/P Ratio: | 1-2 |

Target Details

| | |
|--------------------|---|
| Gene Name: | ITGAX |
| Reactivity: | Human |
| Immunogen: | Anti-CD11c Antibody (Monoclonal) was produced by repeated immunizations with CD11c antigen. |

Purity/Specificity: Phycoerythrin conjugated CD11c Monoclonal Antibody was purified from tissue culture supernatant via affinity chromatography and is directed against human CD11c. Reactivity is observed against human CD11c, Baboon, Chimpanzee, Cynomolgus, and Rhesus. Cross reactivity with CD11c from other sources has not been tested. Anti-CD11c is conjugated with PE under optimal conditions and the solution is free of unconjugated PE.

Relevant Links:

- [UniProtKB - P20702](#)
- [NCBI - NP_000878.2](#)
- [GeneID - 3687](#)

Application Details

| | |
|-----------------------------|--|
| Tested Applications: | FC |
| Application Note: | Anti-CD11c is tested for Flow Cytometry and is useful in Immunofluorescence and Immunoprecipitation. Researchers should determine optimal titers for applications that are not stated. |
| Assay Dilutions: | All assays should be optimized by the user. Recommended dilutions (if any) may be listed below. |
| FC: | 5µL/test/1x10 ⁵ to 1x10 ⁸ cells |
| IF: | User Optimized |
| IP: | User Optimized |

Formulation

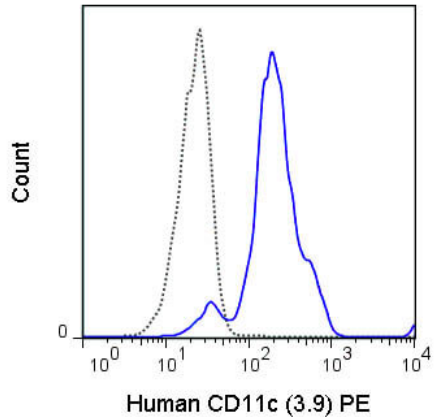
| | |
|------------------------|---|
| Physical State: | Liquid (sterile filtered) |
| Concentration: | 0.2 mg/mL Sufficient to run approximately 100 tests |
| Buffer: | 0.01 M Sodium Phosphate, 0.15 M Sodium Chloride, pH 7.2 |
| Preservative: | 0.09% (w/v) Sodium Azide |
| Stabilizer: | 0.1% Gelatin |

Shipping & Handling

| | |
|----------------------------|---|
| Shipping Condition: | Wet Ice |
| Storage Condition: | Store vial at 4° C prior to opening. Dilute only prior to immediate use. This product is stable at 4° C as an undiluted liquid. Use subdued lighting during handling and incubation of cells prior to analysis. Store reagent in the dark. DO NOT FREEZE. |

Expiration: Expiration date is six (6) months from date of receipt.

Images



Flow Cytometry

Flow Cytometry of Mouse anti-CD11c Phycoerythrin Conjugated Monoclonal Antibody. Cells: human peripheral blood monocytes. Stimulation: none. Antibody: (Dotted Line) 1 µg PE Mouse IgG1 isotype control; (BLUE) Phycoerythrin Anti-CD11c mouse antibody using 5 ul (1 µg).

Disclaimer

This product is for research use only and is not intended for therapeutic or diagnostic applications. Please contact a technical service representative for more information. All products of animal origin manufactured by Rockland Immunochemicals are derived from starting materials of North American origin. Collection was performed in United States Department of Agriculture (USDA) inspected facilities and all materials have been inspected and certified to be free of disease and suitable for exportation. All properties listed are typical characteristics and are not specifications. All suggestions and data are offered in good faith but without guarantee as conditions and methods of use of our products are beyond our control. All claims must be made within 30 days following the date of delivery. The prospective user must determine the suitability of our materials before adopting them on a commercial scale. Suggested uses of our products are not recommendations to use our products in violation of any patent or as a license under any patent of Rockland Immunochemicals, Inc. If you require a commercial license to use this material and do not have one, then return this material, unopened to: Rockland Inc., P.O. BOX 5199, Limerick, Pennsylvania, USA.