

## Datasheet for 200-308-N25

**CD25 Phycoerythrin Antibody****Overview**

<b>Description:</b>	Anti-CD25 (MOUSE) Phycoerythrin Conjugated Monoclonal Antibody - 200-308-N25
<b>Item No.:</b>	200-308-N25
<b>Size:</b>	500 µL
<b>Applications:</b>	FC
<b>Reactivity:</b>	Human
<b>Host Species:</b>	Mouse

**Product Details**

<b>Background:</b>	The BC96 antibody is specific for human CD25, a 55 kDa surface protein also known as the Interleukin-2 Receptor alpha chain, or IL-2R alpha. CD25 may bind IL-2 by itself, although with low affinity and without induction of cell signaling. CD25 is also expressed within a high-affinity complex, along with the IL-2R beta chain (CD122) and the common gamma chain (CD132), to form a signaling receptor complex. Signaling via CD25 may modulate Th17 and Treg cell differentiation, and has been shown to play a role in the function of dendritic cells. The BC96 antibody may be used as a marker for expression of CD25 during T and B cell development, on activated mature T and B cells, and for its expression at high levels on natural T regulatory cells (nTreg cells) in the thymus or periphery, and on induced peripheral Tregs.
<b>Synonyms:</b>	Interleukin-2 receptor subunit alpha, IL-2 receptor subunit alpha, IL-2-RA, IL-2R subunit alpha, IL2-RA, TAC antigen, p55
<b>Host Species:</b>	Mouse
<b>Conjugate:</b>	R-Phycoerythrin (RPE)
<b>Clonality:</b>	Monoclonal
<b>Clone ID:</b>	BC96
<b>Format:</b>	IgG1
<b>F/P Ratio:</b>	1-2

**Target Details**

<b>Gene Name:</b>	IL2RA
-------------------	-------

<b>Reactivity:</b>	Human
<b>Immunogen:</b>	Anti-CD25 Antibody (Monoclonal) was produced by repeated immunizations with CD25 antigen.
<b>Purity/Specificity:</b>	Phycoerythrin conjugated CD25 Monoclonal Antibody was purified from tissue culture supernatant via affinity chromatography and is directed against human CD25. Reactivity is observed against human CD25, Baboon, Chimpanzee, Cynomolgus, and Rhesus. Cross reactivity with CD25 from other sources has not been tested. Anti-CD25 is conjugated with PE under optimal conditions and the solution is free of unconjugated PE.
<b>Relevant Links:</b>	<ul style="list-style-type: none"><li>• <a href="#">UniProtKB - P01589</a></li><li>• <a href="#">NCBI - NP_000408.1</a></li><li>• <a href="#">GeneID - 3559</a></li></ul>

## Application Details

<b>Tested Applications:</b>	FC
<b>Application Note:</b>	Anti-CD25 is tested for Flow Cytometry. Researchers should determine optimal titers for applications that are not stated.
<b>Assay Dilutions:</b>	All assays should be optimized by the user. Recommended dilutions (if any) may be listed below.
<b>FC:</b>	5 $\mu$ L/test/1x10e5 to 1x10e8 cells

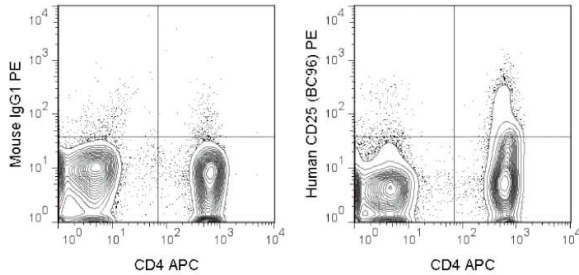
## Formulation

<b>Physical State:</b>	Liquid (sterile filtered)
<b>Concentration:</b>	0.012 mg/mL Sufficient to run approximately 100 tests
<b>Buffer:</b>	0.01 M Sodium Phosphate, 0.15 M Sodium Chloride, pH 7.2
<b>Preservative:</b>	0.09% (w/v) Sodium Azide
<b>Stabilizer:</b>	0.1% Gelatin

## Shipping & Handling

<b>Shipping Condition:</b>	Wet Ice
<b>Storage Condition:</b>	Store vial at 4° C prior to opening. Dilute only prior to immediate use. This product is stable at 4° C as an undiluted liquid. Use subdued lighting during handling and incubation of cells prior to analysis. Store reagent in the dark. DO NOT FREEZE.
<b>Expiration:</b>	Expiration date is six (6) months from date of receipt.

## Images



### Flow Cytometry

Flow Cytometry of Mouse anti-CD25 Phycoerythrin Conjugated Monoclonal Antibody. Cells: human peripheral blood lymphocytes. Stimulation: none. Antibody: (LEFT) PE Mouse IgG1 kappa isotype control and APC Anti-CD4 using 5  $\mu$ L; (RIGHT) Phycoerythrin Anti-CD25 mouse antibody and APC Anti-CD4 using 5  $\mu$ L.

## Disclaimer

This product is for research use only and is not intended for therapeutic or diagnostic applications. Please contact a technical service representative for more information. All products of animal origin manufactured by Rockland Immunochemicals are derived from starting materials of North American origin. Collection was performed in United States Department of Agriculture (USDA) inspected facilities and all materials have been inspected and certified to be free of disease and suitable for exportation. All properties listed are typical characteristics and are not specifications. All suggestions and data are offered in good faith but without guarantee as conditions and methods of use of our products are beyond our control. All claims must be made within 30 days following the date of delivery. The prospective user must determine the suitability of our materials before adopting them on a commercial scale. Suggested uses of our products are not recommendations to use our products in violation of any patent or as a license under any patent of Rockland Immunochemicals, Inc. If you require a commercial license to use this material and do not have one, then return this material, unopened to: Rockland Inc., P.O. BOX 5199, Limerick, Pennsylvania, USA.