

Datasheet for 200-306-NF6

ModDetect® 2'-O-Methyl (2'OMe) Biotin Clone OME02**Overview**

Description:	ModDetect® 2'-O-Methyl (2'OMe) Biotin Clone OME02 - 200-306-NF6
Item No.:	200-306-NF6
Size:	100 µg
Applications:	ELISA, IF
Host Species:	Mouse

Product Details

Background:	Current studies focusing on RNA therapeutics use as potential drugs antisense oligonucleotides (ASO), short interfering RNA (siRNA), and micro RNA (miRNA). The choice of oligonucleotide chosen for a specific treatment is dependent on many factors. However, all oligo therapeutics must be modified in some manner, as unmodified nucleotides are difficult to identify and are highly susceptible to degradation by endogenous nucleases. Modifications can be created within the sugar-phosphate backbone (first generation), the ribose sugar (second and third generation), or at multiple locations (third generation). Antibodies to modified oligonucleotides are useful for basic immunoassays including, ELISA, IHC, and IF. In addition, several types of toxicology assays (immunogenicity assays), such as antibody-drug assays (ADA) or other pharmacokinetic (PK) and pharmacodynamic (PD) studies require oligonucleotide antibodies as analytical tools for general research and preclinical trial experiments. Antibodies to an oligonucleotide therapeutic allow researchers to assess cellular uptake, tissue distribution, and can serve as a positive control for immunogenicity studies.
Synonyms:	2'-O-Methyl, 2'OMe, ASO, anti-sense oligonucleotide, siRNA, RNA therapeutic, gapmer, aptamer, Biotin Conjugated Anti-2'-O-Methoxyethyl, 2'-O-Methoxyethyl BAC
Host Species:	Mouse
Conjugate:	Biotin
Clonality:	Monoclonal
Clone ID:	OME02
Format:	IgG1

Target Details

Immunogen Type:	Other
Immunogen:	ModDetect® 2'-O-Methyl (2'OMe) Clone OME02 was prepared from cell culture supernatant produced by repeated immunizations with a proprietary oligo sequence.
Purity/Specificity:	This Protein A purified ModDetect® 2'-O-Methyl (2'OMe) Clone OME02 is directed against 2'OMe modified ribose sugar. This product was Protein A purified from monospecific supernatant and conjugated to biotin.

Application Details

Tested Applications:	ELISA, IF
Application Note:	ModDetect® 2'-O-Methyl (2'OMe) Biotin Clone OME02 has been validated for use in ELISA and immunofluorescence. In antigen-down or immunometric ELISAs, the ModDetect® 2'-O-Methyl (2'OMe) Biotin Clone OME02 preferentially detects 2'OMe modified ribose sugar groups over native deoxyribose or ribose sugars. It is also likely to be functional in IF and IHC assays, however, its sensitivity, specificity, and conditions for optimal use in these assays has not yet been determined. All assays should be optimized by the user.
Assay Dilutions:	All assays should be optimized by the user. Recommended dilutions (if any) may be listed below.
ELISA:	User Optimized
IF:	1:100

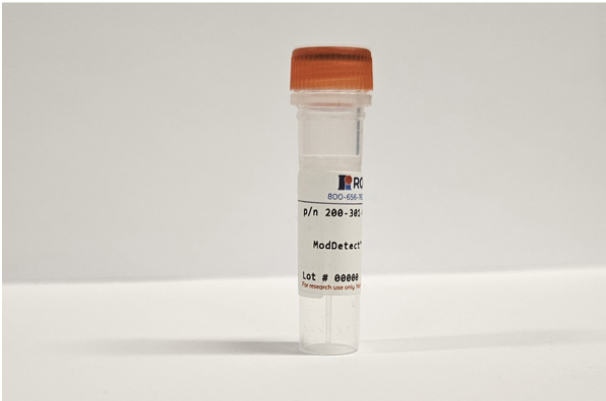
Formulation

Physical State:	Liquid (sterile filtered)
Concentration:	1 mg/mL by UV absorbance at 280 nm
Buffer:	0.02 M Potassium Phosphate, 0.15 M Sodium Chloride, pH 7.2
Preservative:	0.01% (w/v) Sodium Azide
Stabilizer:	10 mg/mL Bovine Serum Albumin (BSA) - Immunoglobulin and Protease free

Shipping & Handling

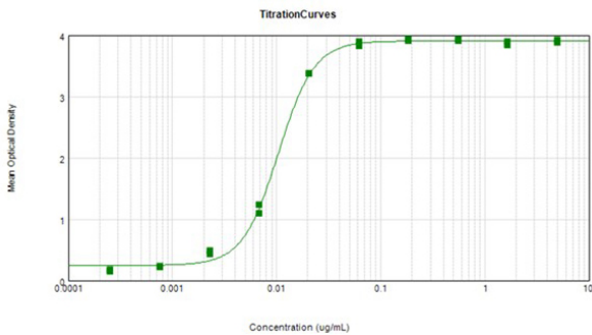
Shipping Condition:	Dry Ice
Storage Condition:	Store vial at -20° C or below prior to opening. Store the vial at -20°C or below after dilution. Avoid cycles of freezing and thawing.
Expiration:	Expiration date is one (1) year from date of receipt.

Images



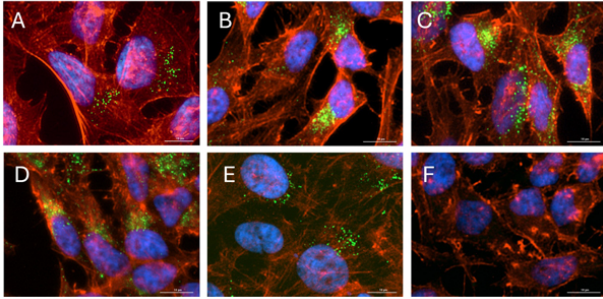
Vial

ModDetect® 2'-O-Methyl (2'OMe) Biotin Clone OME02



ELISA

ELISA results of Rockland's ModDetect® 2'-O-Methyl (2'OMe) Biotin Clone OME02. Each well was coated in duplicate with 5 µg/mL sample of 2'-O-Methyl (2'OMe). The working dilution for the 2'-O-Methyl (2'OMe) Biotin Clone OME02 antibody is 1:96,200. The starting dilution of antibody was 5 µg/mL, and the X-axis represents the Log10 of a 3-fold dilution. The analysis was done following a 4-parameter curve fit model. The assay was performed using Streptavidin-HRP conjugated secondary antibody (p/n S000-03) at 1:10,000 and TMB substrate (p/n TMBE-1000).



Immunofluorescence Microscopy

Rockland Immunochemicals ModDetect® Biotinylated 2'OMe antibodies detect FDA-approved Lumasiran, an siRNA used to treat Primary Hyperoxaluria type 1 (PH1). Briefly, HeLa cells were transfected with Lumasiran, fixed with 4% formaldehyde, and permeabilized with 0.3% Triton-X 100. After being blocked with 5% Goat Serum (p/n D204-00-0050), cells were incubated overnight at 4 °C with a panel of monoclonal antibodies separately, each reactive to the O-Methyl (OMe) chemical modification used to stabilize the siRNA. Biotinylated primary antibodies were used at dilutions ranging from 1:100 to 1:1000 which were subsequently detected using Streptavidin DyLight 488 secondary antibody (p/n S000-41) for 1-hour at room temperature to identify the intracellular localization of siRNA (green). Cells were then counterstained with Phalloidin for actin to visualize the cytoskeleton (red) and Hoechst for nuclei (blue). Panel images show individual clones as follows (A) OME01 (p/n 200-306-NF5), (B) OME02 (p/n 200-306-NF6), (C) OME03 (p/n 200-306-NF7), (D) OME04 (p/n 200-306-NF8), (E) OME05 (p/n 200-306-NF9). No staining is observed for siRNA in a negative control (panel F) where HeLa cells were similarly treated with antibodies but not transfected with siRNA. Only clone OME01 shows detection of endogenous O-methylation under certain conditions of staining.

Disclaimer

THE MATERIALS PROVIDED WITH THIS CERTIFICATE OF ANALYSIS (MATERIALS) ARE FOR RESEARCH USE ONLY AND SUBJECT TO A MATERIAL EVALUATION AGREEMENT.

BY USING THIS PRODUCT, THE USER AGREES TO BE BOUND BY THE TERMS OF THE MATERIAL EVALUATION AGREEMENT. If the user is not willing to accept the terms of the agreement and the product is unused, Rockland will accept return of the unused product and provide the user with a full refund. Pursuant to the agreement, the user may use the product for research use only.

NO TRANSFER OR COMMERCIAL USE OF THIS PRODUCT IS ALLOWED. Commercial use means a use of the product in exchange for consideration, including use in the manufacture of a product, in a clinical trial or other testing regulated by a government agency (e.g. FDA, EMEA, EPA, etc.) including ADA and clearance assays, use of the product in the provision of services, and the resale of the product. Rockland reserves all other rights not permitted under the license granted herein, including the rights which are embodied in other products or materials derived from the use of the Materials or know-how embodied in the Materials.

NO RIGHT IS GRANTED UNDER THE LICENSE TO MODIFY OR OTHERWISE CREATE DERIVATIVES OR VARIATIONS OF THE PRODUCT OR TO USE ROCKLAND'S KNOW-HOW OR OTHER INTELLECTUAL PROPERTY FOR OTHER USES. No other use of this product is authorized without the express written prior consent of Rockland, including without limitation, unauthorized commercial uses, in vitro diagnostic uses, therapeutic uses, or any type of consumption by or application to humans or animals.

For uses outside the agreement including any diagnostic, therapeutic or commercial use, please contact Rockland for supply and licensing information at licensing@rockland.com.