

Datasheet for 200-301-Z72

BIM Antibody [1C2H4]**Overview**

Description:	Anti-BIM (MOUSE) Antibody - 200-301-Z72
Item No.:	200-301-Z72
Size:	100 µg
Applications:	ELISA, IF, IHC, WB
Reactivity:	Human, Mouse, Rat
Host Species:	Mouse

Product Details

Background:	Members in the Bcl-2 family are critical regulators of apoptosis by either inhibiting or promoting cell death. Bcl-2 homology 3 (BH3) domain is a potent death domain. BH3 domain containing pro-apoptotic proteins, including Bad, Bax, Bid, Bik, and Hrk, form a growing subclass of the Bcl-2 family. Bim is another BH3 domain containing protein which can induce apoptosis. Bim interacts with diverse members in the pro-survival Bcl-2 sub-family including Bcl-2, Bcl-xL and Bcl-w. The messenger RNA of Bim is ubiquitously expressed in multiple tissues and cell lines.
Synonyms:	Bim Antibody, BAM, BIM, BOD, BCL2L11
Host Species:	Mouse
Clonality:	Monoclonal
Clone ID:	[1C2H4]
Format:	IgG1

Target Details

Gene Name:	BCL2L11
Reactivity:	Human, Mouse, Rat
Immunogen Type:	Recombinant Protein
Immunogen:	Anti-Mouse monoclonal Bim antibody was produced by repeated immunizations in mice with a recombinant protein corresponding to amino acids 2 to 198 of human Bim.

Purity/Specificity: Anti-Bim Monoclonal Antibody was Protein A purified. Cross reactivity with Bim [1C2H4] from other sources has not been determined.

Relevant Links:

- [UniProtKB - O43521](#)
- [GeneID - 10018](#)
- [NCBI - NP_619527](#)

Application Details

Tested Applications: ELISA, IF, IHC, WB

Application Note: Anti-Bim Antibody has been tested for use in ELISA, Western Blotting, Immunocytochemistry and Immunofluorescence. Specific conditions for reactivity should be optimized by the end user. Expect a band at approximately 22 kDa in Western Blots of specific cell lysates and tissues. Validated in human samples. All other applications and species not yet tested.

Assay Dilutions: All assays should be optimized by the user. Recommended dilutions (if any) may be listed below.

ELISA: 1:10,000

IF: 20 µg/mL

IHC: 10 µg/mL

WB: 1 µg/mL

Formulation

Physical State: Liquid (sterile filtered)

Concentration: 1 mg/mL by UV absorbance at 280 nm

Buffer: 0.01 M Sodium Phosphate, 0.25 M Sodium Chloride, pH 7.2

Preservative: 0.02% (w/v) Sodium Azide

Stabilizer: None

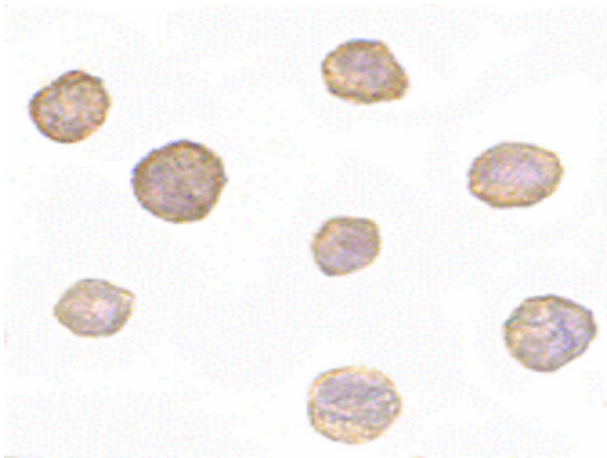
Shipping & Handling

Shipping Condition: Dry Ice

Storage Condition: Store vial at -20° C prior to opening. Aliquot contents and freeze at -20° C or below for extended storage. Avoid cycles of freezing and thawing. Centrifuge product if not completely clear after standing at room temperature. This product is stable for several weeks at 4° C as an undiluted liquid. Dilute only prior to immediate use.

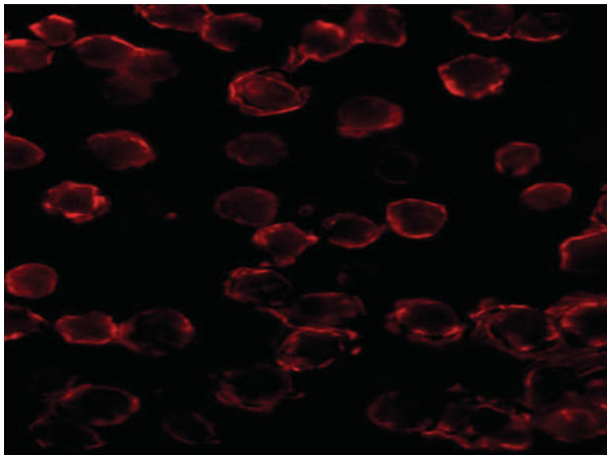
Expiration: Expiration date is one (1) year from date of receipt.

Images



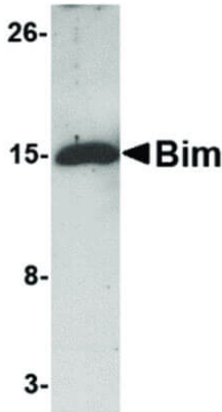
Immunocytochemistry

Immunocytochemistry of Mouse anti-Bim antibody. Tissue: K562 cells. Primary antibody: Bim antibody at 10 $\mu\text{g}/\text{mL}$. Secondary antibody: Peroxidase mouse secondary antibody at 1:10,000. Staining: Bim as precipitated brown signal.



Immunofluorescence Microscopy

Immunofluorescence Microscopy of Mouse anti-Bim antibody. Tissue: K562 cells. Primary antibody: Bim antibody at 20 $\mu\text{g}/\text{mL}$. Secondary antibody: Peroxidase mouse secondary antibody at 1:20,000. Staining: Bim as red fluorescent signal.

**Western Blot**

Western Blot of Mouse anti-Bim antibody. Lane A: 5 ng of Bim recombinant protein. Primary antibody: Bim antibody at 1 μ g/mL overnight at 4°C. Secondary antibody: Mouse HRP secondary antibody. Block: 5% BLOTTO. Observed size: 15 kDa for Bim.

Disclaimer

This product is for research use only and is not intended for therapeutic or diagnostic applications. Please contact a technical service representative for more information. All products of animal origin manufactured by Rockland Immunochemicals are derived from starting materials of North American origin. Collection was performed in United States Department of Agriculture (USDA) inspected facilities and all materials have been inspected and certified to be free of disease and suitable for exportation. All properties listed are typical characteristics and are not specifications. All suggestions and data are offered in good faith but without guarantee as conditions and methods of use of our products are beyond our control. All claims must be made within 30 days following the date of delivery. The prospective user must determine the suitability of our materials before adopting them on a commercial scale. Suggested uses of our products are not recommendations to use our products in violation of any patent or as a license under any patent of Rockland Immunochemicals, Inc. If you require a commercial license to use this material and do not have one, then return this material, unopened to: Rockland Inc., P.O. BOX 5199, Limerick, Pennsylvania, USA.