

Datasheet for 200-301-X12**Lamin A/C Antibody****Overview**

Description:	Anti-Lamin A/C (MOUSE) Monoclonal Antibody - 200-301-X12
Item No.:	200-301-X12
Size:	100 µL
Applications:	IHC, WB
Reactivity:	Human
Host Species:	Mouse

Product Details

Background:	Lamins A and C are nuclear structural proteins that are part of the intermediate filament family and coded for by the same gene (LMNA). Lamins A and C are nearly identical except for their carboxy termini. Mutations in the gene encoding lamins A/C have been shown to cause a variety of diseases including autosomal dominant Emery-Dreifuss muscular dystrophy, autosomal dominant limb-girdle muscular dystrophy and Charcot-Marie-Tooth disorder type 2. Lamin A/C Antibody is ideal for researchers interested in cancer research.
Synonyms:	Prelamin-A/C, 70 kDa lamin, Renal carcinoma antigen NY-REN-32, LMN1
Host Species:	Mouse
Clonality:	Monoclonal
Clone ID:	4C4
Format:	IgG1

Target Details

Gene Name:	LMNA
Reactivity:	Human
Immunogen Type:	Recombinant Protein
Immunogen:	Anti-Lamin A/C Antibody was produced in mice by repeated immunizations with a recombinant full length human lamin C expressed in and purified from E. Coli.

Purity/Specificity: Anti-Lamin A/C Antibody was purified from tissue culture supernatant by protein G chromatography.

Relevant Links:

- [UniProtKB - P02545](#)
- [GeneID - 4000](#)
- [NCBI - P02545](#)

Application Details

Tested Applications: IHC, WB

Application Note: Anti-Lamin A/C Antibody is tested for Western Blot, Immunocytochemistry, and Immunohistochemistry, and it is specific for the ~64 and 74 kDa lamin A and C proteins. Specific conditions for reactivity should be optimized by the end user.

Assay Dilutions: All assays should be optimized by the user. Recommended dilutions (if any) may be listed below.

ELISA: 1:50,000

IHC: 1:1000

WB: 1:5000

Formulation

Physical State: Liquid (sterile filtered)

Buffer: 0.02 M Potassium Phosphate, 0.15 M Sodium Chloride, pH 7.2

Preservative: 0.01% (w/v) Sodium Azide

Stabilizer: None

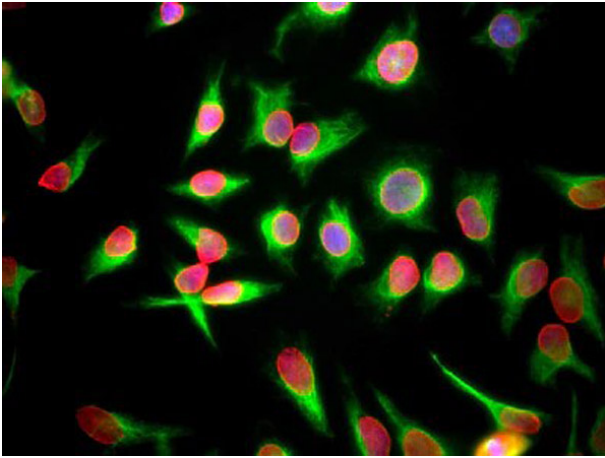
Shipping & Handling

Shipping Condition: Wet Ice

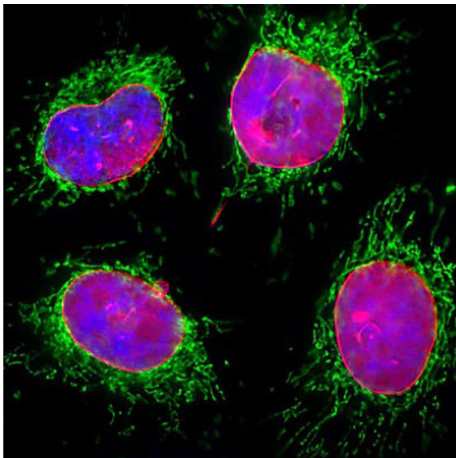
Storage Condition: Store vial at -20° C prior to opening in undiluted aliquots. Aliquot contents and freeze at -20° C or below for extended storage. Avoid cycles of freezing and thawing. Centrifuge product if not completely clear after standing at room temperature.

Expiration: Expiration date is one (1) year from date of receipt.

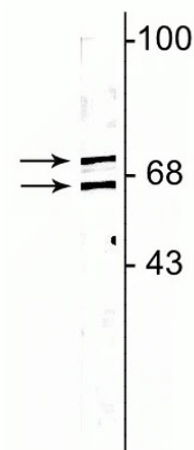
Images

**Immunofluorescence Microscopy**

Immunostaining of HeLa cells showing strong nuclear lamina staining with Anti-Lamin A/C (p/n 200-301-X12, red, 1:1000) and anti-Vimentin (green, 1:500).

**Immunofluorescence Microscopy**

Immunostaining of HeLa cells showing strong nuclear lamina staining with Anti-Lamin A/C (p/n 200-301-X12, red, 1:2000), anti-HSP60 (green), and nuclear DNA (Hoechst, blue).

**Western Blot**

Western Blot of Anti-Lamin A/C.

HeLa cell lysate showing specific immunolabeling of the ~64 kDa and ~74 kDa lamin A/C proteins.

Disclaimer

This product is for research use only and is not intended for therapeutic or diagnostic applications. Please contact a technical service representative for more information. All products of animal origin manufactured by Rockland Immunochemicals are derived from starting materials of North American origin. Collection was performed in United States Department of Agriculture (USDA) inspected facilities and all materials have been inspected and certified to be free of disease and suitable for exportation. All properties listed are typical characteristics and are not specifications. All suggestions and data are offered in good faith but without guarantee as conditions and methods of use of our products are beyond our control. All claims must be made within 30 days following the date of delivery. The prospective user must determine the suitability of our materials before adopting them on a commercial scale. Suggested uses of our products are not recommendations to use our products in violation of any patent or as a license under any patent of Rockland Immunochemicals, Inc. If you require a commercial license to use this material and do not have one, then return this material, unopened to: Rockland Inc., P.O. BOX 5199, Limerick, Pennsylvania, USA.