

Datasheet for 200-301-W92

Alpha II Spectrin Antibody

Overview

Description:	Anti-Alpha II Spectrin (MOUSE) Monoclonal Antibody - 200-301-W92
Item No.:	200-301-W92
Size:	100 µL
Applications:	IHC, WB
Reactivity:	Human, Mouse, Rat, Bovine
Host Species:	Mouse

Product Details

Background:	The spectrin family of cytoskeletal proteins is comprised of 2 alpha genes ($\alpha 1$ and $\alpha 2$) and five beta genes ($\beta 1$ - $\beta 5$). Spectrins have been shown to function as scaffolding proteins in mechanical support of the plasma membrane as well as bind other membrane proteins and lipids. Defects in spectrin genes have been linked to some forms of hereditary spherocytosis, a type of auto-hemolytic anemia which is characterized by spherical red blood cells that are more prone to lysis. Alpha II Spectrin Antibody is ideal for researchers interested in cell cycle research.
Synonyms:	Spectrin alpha chain non-erythrocytic 1, Fodrin alpha chain, Spectrin nonerythroid alpha subunit
Host Species:	Mouse
Clonality:	Monoclonal
Clone ID:	3D7
Format:	IgG1

Target Details

Gene Name:	SPTAN1
Reactivity:	Human, Mouse, Rat, Bovine
Immunogen Type:	Recombinant Protein
Immunogen:	Anti-Alpha II Spectrin Antibody was produced in mice by repeated immunizations with a recombinant construct containing the 7th, 8th, 9th repeats of human alpha II spectrin expressed in and purified from E. coli.

Purity/Specificity: Anti-Alpha II Spectrin Antibody was purified from tissue culture supernatant by protein G chromatography.

Relevant Links:

- [UniProtKB - Q13813](#)
- [GeneID - 6709](#)
- [NCBI - NP_001123910](#)

Application Details

Tested Applications: IHC, WB

Application Note: Anti-Alpha II Spectrin Antibody is tested for Western Blot, immunohistochemistry, and immunocytochemistry. Expect a band at approximately ~240 kDa on specific lysates or tissues. Specific conditions for reactivity should be optimized by the end user.

Assay Dilutions: All assays should be optimized by the user. Recommended dilutions (if any) may be listed below.

ELISA: 1:20,000

IHC: 1:500-1:2000

WB: 1:2000

Formulation

Physical State: Liquid (sterile filtered)

Buffer: 0.02 M Potassium Phosphate, 0.15 M Sodium Chloride, pH 7.2

Preservative: 0.01% (w/v) Sodium Azide

Stabilizer: 50% (v/v) Glycerol

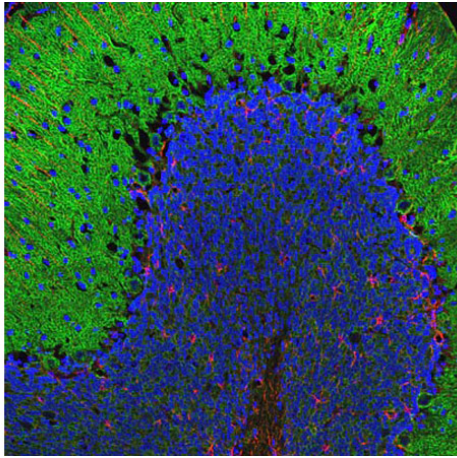
Shipping & Handling

Shipping Condition: Wet Ice

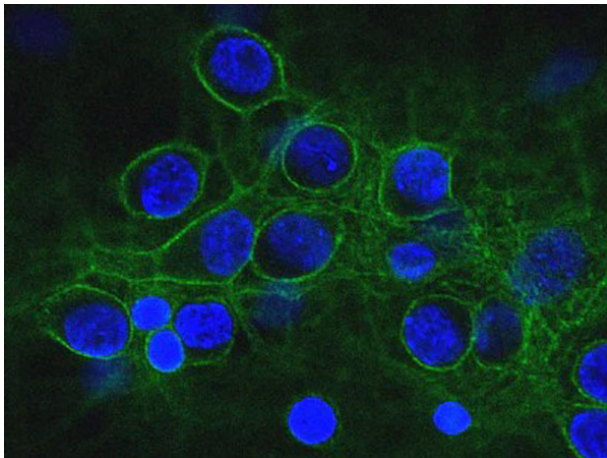
Storage Condition: Store vial at -20° C prior to opening in undiluted aliquots. Aliquot contents and freeze at -20° C or below for extended storage. Avoid cycles of freezing and thawing. Centrifuge product if not completely clear after standing at room temperature. Dilute only prior to immediate use.

Expiration: Expiration date is one (1) year from date of receipt.

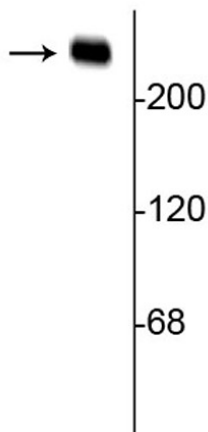
Images

**Immunofluorescence Microscopy**

Immunofluorescence of a section of rat cerebellum selectively labeling the submembrane cytoskeleton on neurons and cell bodies and dendrites of Purkinje cells with alpha-II-spectrin (p/n 200-301-W92, 1:2000, green) and labeling the processes of Bergmann glia and astrocytes with anti-GFAP (1:5000, red).

**Immunofluorescence Microscopy**

Immunofluorescence of cultured neurons and glia cells showing specific axonal and dendritic labeling with anti-alpha-II-spectrin (p/n 200-301-W92, 1:500, green), and nuclear staining with DAPI (blue).

**Western Blot**

Western Blot with Anti-Alpha-II-Spectrin antibody. Rat hippocampal lysate showing specific immunolabeling of the ~240 kDa alpha II spectrin protein.

Disclaimer

This product is for research use only and is not intended for therapeutic or diagnostic applications. Please contact a technical service representative for more information. All products of animal origin manufactured by Rockland Immunochemicals are derived from starting materials of North American origin. Collection was performed in United States Department of Agriculture (USDA) inspected facilities and all materials have been inspected and certified to be free of disease and suitable for exportation. All properties listed are typical characteristics and are not specifications. All suggestions and data are offered in good faith but without guarantee as conditions and methods of use of our products are beyond our control. All claims must be made within 30 days following the date of delivery. The prospective user must determine the suitability of our materials before adopting them on a commercial scale. Suggested uses of our products are not recommendations to use our products in violation of any patent or as a license under any patent of Rockland Immunochemicals, Inc. If you require a commercial license to use this material and do not have one, then return this material, unopened to: Rockland Inc., P.O. BOX 5199, Limerick, Pennsylvania, USA.