

**Datasheet for 200-301-P41**

## Mucin Gastric Antibody

### Overview

<b>Description:</b>	Anti-Mucin Gastric (MOUSE) Antibody - 200-301-P41
<b>Item No.:</b>	200-301-P41
<b>Size:</b>	100 µg
<b>Applications:</b>	IHC, WB
<b>Reactivity:</b>	Human, Mouse, Rat, Rabbit
<b>Host Species:</b>	Mouse

### Product Details

<b>Background:</b>	MUC1 is a large cell surface mucin glycoprotein expressed by most glandular and ductal epithelial cells and some hematopoietic cell lineages. It is expressed on most secretory epithelium, including mammary gland and some hematopoietic cells. It is expressed abundantly in lactating mammary glands and overexpressed abundantly in >90% breast carcinomas and metastases. Transgenic MUC1 has been shown to associate with all four cebB receptors and localize with erbB1 (EGFR) in lactating glands. The MUC1 gene contains seven exons and produces several different alternatively spliced variants. The major expressed form of MUC1 uses all seven exons and is a type 1 transmembrane protein with a large extracellular tandem repeat domain. The tandem repeat domain is highly O glycosylated and alterations in glycosylation have been shown in epithelial cancer cells. This antibody is suitable for researchers interested in neuroscience research, developmental signaling, and cell adhesion.
<b>Synonyms:</b>	MG1, MUC5, MUC9, MUC-5B, Cervical mucin, High molecular weight salivary mucin MG1, Mucin-5 subtype B, tracheobronchial, Sublingual gland mucin
<b>Host Species:</b>	Mouse
<b>Clonality:</b>	Monoclonal
<b>Clone ID:</b>	45M1
<b>Format:</b>	IgG1

### Target Details

<b>Gene Name:</b>	MUC5B
-------------------	-------

<b>Reactivity:</b>	Human, Mouse, Rat, Rabbit
<b>Immunogen Type:</b>	Other
<b>Immunogen:</b>	Mucin Gastric antibody was produced in mice by repeated immunizations with mucin from human ovarian cyst fluid.
<b>Purity/Specificity:</b>	Anti-Mucin Gastric antibody was purified from mouse ascites by protein A chromatography. This product reacts with human, mouse, rat, and rabbit. Cross reactivity with Mucin Gastric from other sources has not been determined.
<b>Relevant Links:</b>	<ul style="list-style-type: none"><li>• <a href="#">UniProtKB - Q9HC84</a></li><li>• <a href="#">GenelD - 727897</a></li><li>• <a href="#">NCBI - NP_002449.2</a></li></ul>

## Application Details

<b>Tested Applications:</b>	IHC, WB
<b>Application Note:</b>	Anti-Mucin Gastric is tested for Immunocytochemistry, Immunohistochemistry, and Western Blot. Specific conditions for reactivity should be optimized by the end user. Expect a band approximately ~596 kDa corresponding to the appropriate cell lysate or extract.
<b>Assay Dilutions:</b>	All assays should be optimized by the user. Recommended dilutions (if any) may be listed below.
<b>ELISA:</b>	1:20,000
<b>IHC:</b>	2-4µg/ml
<b>WB:</b>	1-2ug/ml

## Formulation

<b>Physical State:</b>	Lyophilized
<b>Concentration:</b>	1.0 mg/ml by UV absorbance at 280 nm
<b>Buffer:</b>	1.2% sodium acetate
<b>Preservative:</b>	0.01% (w/v) Sodium Azide
<b>Stabilizer:</b>	2mg BSA
<b>Reconstitution Volume:</b>	1.0 mL
<b>Reconstitution Buffer:</b>	Neutral PBS

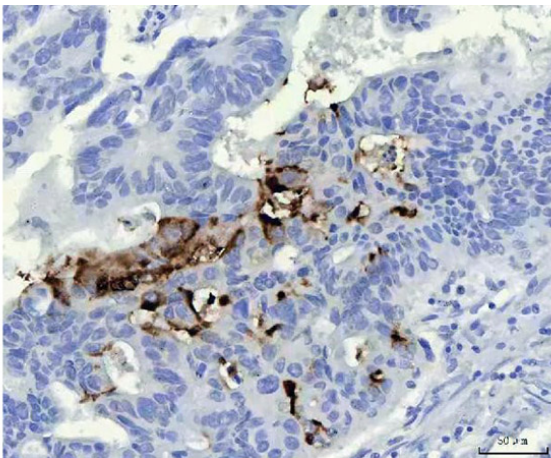
## Shipping & Handling

**Shipping Condition:** Ambient

**Storage Condition:** Store vial at 4° C prior to opening. Aliquot contents and freeze at -20° C or below for extended storage. Avoid cycles of freezing and thawing. Centrifuge product if not completely clear after standing at room temperature. This product is stable for several weeks at 4° C as an undiluted liquid. Dilute only prior to immediate use.

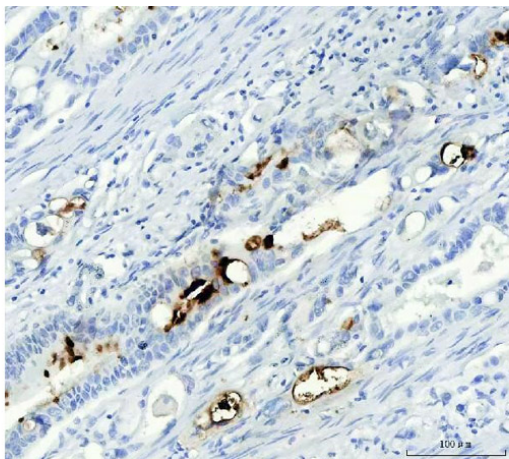
**Expiration:** Expiration date is one (1) year from date of receipt.

## Images



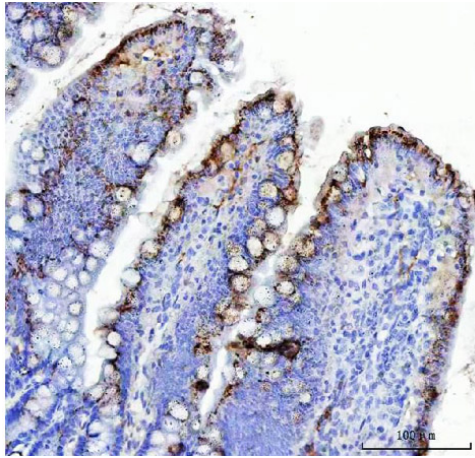
### Immunohistochemistry

Immunohistochemistry analysis of Mucin Gastric using anti-Mucin Gastric antibody. Mucin Gastric was detected in a paraffin-embedded section of human colon cancer tissue. Heat mediated antigen retrieval was performed in EDTA buffer (pH 8.0, epitope retrieval solution). The tissue section was blocked with 10% goat serum. The tissue section was then incubated with 2 µg/ml mouse anti-Mucin Gastric Antibody overnight at 4°C. Peroxidase Conjugated Goat Anti-mouse IgG was used as secondary antibody and incubated for 30 minutes at 37°C. The tissue section was developed using HRP Conjugated Mouse IgG Super Vision Assay Kit with DAB as the chromogen.



### Immunohistochemistry

Immunohistochemistry analysis of Mucin Gastric using anti-Mucin Gastric antibody. Mucin Gastric was detected in a paraffin-embedded section of human colon cancer tissue. Heat mediated antigen retrieval was performed in EDTA buffer (pH 8.0, epitope retrieval solution). The tissue section was blocked with 10% goat serum. The tissue section was then incubated with 2 µg/ml mouse anti-Mucin Gastric Antibody overnight at 4°C. Peroxidase Conjugated Goat Anti-mouse IgG was used as secondary antibody and incubated for 30 minutes at 37°C. The tissue section was developed using HRP Conjugated Mouse IgG Super Vision Assay Kit with DAB as the chromogen.



### **Immunohistochemistry**

Immunohistochemistry analysis of Mucin Gastric using anti-Mucin Gastric antibody.

Mucin Gastric was detected in a paraffin-embedded section of rat colon tissue. Heat mediated antigen retrieval was performed in EDTA buffer (pH 8.0, epitope retrieval solution). The tissue section was blocked with 10% goat serum. The tissue section was then incubated with 2 μg/ml mouse anti-Mucin Gastric Antibody overnight at 4°C. Peroxidase Conjugated Goat Anti-mouse IgG was used as secondary antibody and incubated for 30 minutes at 37°C. The tissue section was developed using HRP Conjugated Mouse IgG Super Vision Assay Kit with DAB as the chromogen.

### **Disclaimer**

This product is for research use only and is not intended for therapeutic or diagnostic applications. Please contact a technical service representative for more information. All products of animal origin manufactured by Rockland Immunochemicals are derived from starting materials of North American origin. Collection was performed in United States Department of Agriculture (USDA) inspected facilities and all materials have been inspected and certified to be free of disease and suitable for exportation. All properties listed are typical characteristics and are not specifications. All suggestions and data are offered in good faith but without guarantee as conditions and methods of use of our products are beyond our control. All claims must be made within 30 days following the date of delivery. The prospective user must determine the suitability of our materials before adopting them on a commercial scale. Suggested uses of our products are not recommendations to use our products in violation of any patent or as a license under any patent of Rockland Immunochemicals, Inc. If you require a commercial license to use this material and do not have one, then return this material, unopened to: Rockland Inc., P.O. BOX 5199, Limerick, Pennsylvania, USA.