

**Datasheet for 200-301-I00****p73 Antibody****Overview**

<b>Description:</b>	Anti-p73 (MOUSE) Monoclonal Antibody - 200-301-I00
<b>Item No.:</b>	200-301-I00
<b>Size:</b>	100 µg
<b>Applications:</b>	ChIP, FC, IF, IHC, IP, WB
<b>Reactivity:</b>	Human
<b>Host Species:</b>	Mouse

**Product Details**

**Background:** Anti-p73 detects human p73. NF-κB is silenced in the cytoplasm by an inhibitory protein, IκB. Synthesis of IκBa is autoregulated. IκB proteins are phosphorylated by IκB kinase complex consisting of at least three proteins, IKK1/a, IKK2/b, and IKK3/g. External stimuli such as tumor necrosis factor or other cytokines initiates a signal transduction cascade that leads to the activation of IκB-kinase complex that specifically phosphorylates IκBa on Serine-32 and Serine-36. Phosphorylation of these sites leads to ubiquitination of IκBa and subsequent degradation by the 26 S proteasome. Degradation of IκBa results in unmasking of the nuclear localization signal of NF-κB dimers, which subsequently translocates to the nucleus and activates target genes. Six members of IκB family members have been identified. One of the first gene induced following NF-κB activation is IκBa. Anti-p73 antibody is ideal for investigators involved in NFκappaB, kinase and Apoptosis research.

<b>Synonyms:</b>	P73, Tumor protein p73, p53-like transcription factor, p53-related protein
<b>Host Species:</b>	Mouse
<b>Clonality:</b>	Monoclonal
<b>Clone ID:</b>	5B429
<b>Format:</b>	IgG1

**Target Details**

<b>Gene Name:</b>	TP73
<b>Reactivity:</b>	Human

<b>Immunogen Type:</b>	Conjugated Peptide
<b>Immunogen:</b>	p73 Antibody was produced in mice prepared by repeated immunizations with full-length human p73 protein.
<b>Purity/Specificity:</b>	Anti-p73 Antibody was purified by Protein G chromatography. A BLAST analysis was used to suggest cross-reactivity with Anti-p73 from Human and Mouse based on 100% homology with the immunizing sequence. It does not cross react with p53. Cross-reactivity with Anti-p73 from other sources has not been determined.
<b>Relevant Links:</b>	<ul style="list-style-type: none"><li>• <a href="#">UniProtKB - O15350</a></li><li>• <a href="#">NCBI - NP_001119712.1</a></li><li>• <a href="#">GeneID - 7161</a></li></ul>

## Application Details

<b>Tested Applications:</b>	ChIP, FC, IF, IHC, IP, WB
<b>Application Note:</b>	Anti-p73 Antibody is tested for use in WB, ChIP, Flow, Flow-IC, ICC/IF, IHC, IHC-Fr, IHC-P, and IP. Expect a band approximately 70kDa on specific lysates. Specific conditions for reactivity should be optimized by the end user.
<b>Assay Dilutions:</b>	All assays should be optimized by the user. Recommended dilutions (if any) may be listed below.
<b>IHC:</b>	5-15 µg/mL
<b>WB:</b>	2 µg/mL

## Formulation

<b>Physical State:</b>	Liquid
<b>Concentration:</b>	1.0 mg/mL by UV absorbance at 280 nm
<b>Buffer:</b>	0.02 M Potassium Phosphate, 0.15 M Sodium Chloride, pH 7.2
<b>Preservative:</b>	0.05% (w/v) Sodium Azide

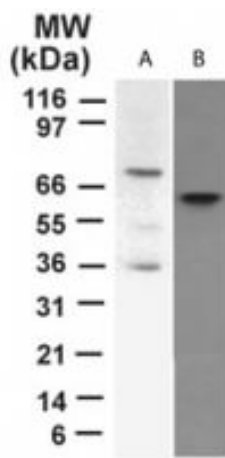
## Shipping & Handling

<b>Shipping Condition:</b>	Dry Ice
----------------------------	---------

**Storage Condition:** Store vial at -20° C prior to opening. Aliquot contents and freeze at -20° C or below for extended storage. Avoid cycles of freezing and thawing. Centrifuge product if not completely clear after standing at room temperature. This product is stable for several weeks at 4° C as an undiluted liquid. Dilute only prior to immediate use.

**Expiration:** Expiration date is one (1) year from date of receipt.

## Images



### Western Blot

Western Blot of Mouse Anti-p73 antibody. Lane A: p-73 in transfected cell lysate. Lane B: p-73 in HeLa cell lysate. Primary antibody: p-73 antibody at 2 µg/mL for overnight at 4°C. Secondary antibody: IRDye800™ mouse secondary antibody at 1:10,000 for 45 min at RT. Block: 5% BLOTTO overnight at 4°C. Predicted/Observed size: 80 kDa for p73. Other band(s): none.

## Disclaimer

This product is for research use only and is not intended for therapeutic or diagnostic applications. Please contact a technical service representative for more information. All products of animal origin manufactured by Rockland Immunochemicals are derived from starting materials of North American origin. Collection was performed in United States Department of Agriculture (USDA) inspected facilities and all materials have been inspected and certified to be free of disease and suitable for exportation. All properties listed are typical characteristics and are not specifications. All suggestions and data are offered in good faith but without guarantee as conditions and methods of use of our products are beyond our control. All claims must be made within 30 days following the date of delivery. The prospective user must determine the suitability of our materials before adopting them on a commercial scale. Suggested uses of our products are not recommendations to use our products in violation of any patent or as a license under any patent of Rockland Immunochemicals, Inc. If you require a commercial license to use this material and do not have one, then return this material, unopened to: Rockland Inc., P.O. BOX 5199, Limerick, Pennsylvania, USA.