

Datasheet for 200-301-GQ2

MEK2 C-Term Antibody**Overview**

Description:	Anti-MEK2 (MOUSE) Monoclonal Antibody - 200-301-GQ2
Item No.:	200-301-GQ2
Size:	100 µg
Applications:	ELISA, WB
Reactivity:	Human, Mouse, Rat
Host Species:	Mouse

Product Details

Background:	MEK2 antibodies detect the MEK2 isoform. Mitogen-activated protein kinase kinase 2, also known as MEK2 or MKK2, is an integral component of the MAP kinase cascade that regulates cell growth and differentiation. This pathway also plays a key role in synaptic plasticity in the brain. Activated MEK 2 acts as a dual specificity kinase phosphorylating both a threonine and a tyrosine residue on MAP kinase. MEK1 and MEK2 are about 80% identical to each other, and nearly identical within the kinase domain. This antibody does not react with MEK1. The MEK2 antibody is ideal for investigators involved in Neuroscience, Cell Signaling and Cancer Research.
Synonyms:	mouse anti-MEK2 Antibody, MAP2K2, MEK, MEK 2, MKK2, PRKMK2, CFC4, MEK-2 Antibody
Host Species:	Mouse
Clonality:	Monoclonal
Clone ID:	12A6.G1.G11
Format:	IgG

Target Details

Gene Name:	MAP2K2
Reactivity:	Human, Mouse, Rat
Immunogen Type:	Conjugated Peptide
Immunogen:	Anti-MEK2 Monoclonal Antibody was produced in mice by repeated immunizations with synthetic peptide corresponding to amino acid residues near the C-terminus conjugated to KLH.

Purity/Specificity: This protein A purified mouse monoclonal antibody reacts specifically with human MEK2. Anti-MEK2 is purified from tissue culture supernatant by protein A purification. Cross reactivity is expected to occur with human, mouse, and rat based on sequence identity of the peptide immunogen. This antibody does not react with the MEK1 isoform.

Relevant Links:

- [UniProtKB - P36507](#)

Application Details

Tested Applications: ELISA, WB

Application Note: Anti-MEK 2 (MOUSE) antibody has been tested by ELISA and Western Blotting. Specific conditions of reactivity should be optimized by the end user. Expect a band of approximately 44 kDa.

Assay Dilutions: All assays should be optimized by the user. Recommended dilutions (if any) may be listed below.

ELISA: 1:40,000

WB: 1µg/mL

Formulation

Physical State: Liquid (sterile filtered)

Concentration: 1.00 mg/ml by UV absorbance at 280 nm

Buffer: 0.02 M Potassium Phosphate, 0.15 M Sodium Chloride, pH 7.2

Preservative: 0.01% (w/v) Sodium Azide

Stabilizer: None

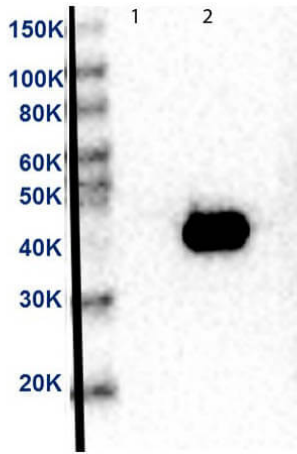
Shipping & Handling

Shipping Condition: Dry Ice

Storage Condition: Store vial at -20° C prior to opening. This product is stable at 4° C as an undiluted liquid. For extended storage, aliquot contents and freeze at -20° C or below. Avoid cycles of freezing and thawing. Dilute only prior to immediate use.

Expiration: Expiration date is one (1) year from date of receipt.

Images

**Western Blot**

Western Blot of Anti-MEK2 Antibody. Lane 1: MEK-1 recombinant protein. Lane 2: MEK-2 recombinant protein. Load: 50ng per lane. Primary Antibody: Anti-MEK2 supernatant clone neat over night at 4°C. Secondary Antibody: Anti-mouse HRP at 1:40,000 dilution.

Disclaimer

This product is for research use only and is not intended for therapeutic or diagnostic applications. Please contact a technical service representative for more information. All products of animal origin manufactured by Rockland Immunochemicals are derived from starting materials of North American origin. Collection was performed in United States Department of Agriculture (USDA) inspected facilities and all materials have been inspected and certified to be free of disease and suitable for exportation. All properties listed are typical characteristics and are not specifications. All suggestions and data are offered in good faith but without guarantee as conditions and methods of use of our products are beyond our control. All claims must be made within 30 days following the date of delivery. The prospective user must determine the suitability of our materials before adopting them on a commercial scale. Suggested uses of our products are not recommendations to use our products in violation of any patent or as a license under any patent of Rockland Immunochemicals, Inc. If you require a commercial license to use this material and do not have one, then return this material, unopened to: Rockland Inc., P.O. BOX 5199, Limerick, Pennsylvania, USA.