

Datasheet for 200-301-GQ0

MEK1 C-Term Antibody**Overview**

Description:	Anti-MEK1 (MOUSE) Monoclonal Antibody - 200-301-GQ0
Item No.:	200-301-GQ0
Size:	100 µg
Applications:	ELISA, WB, IP
Reactivity:	Human, Mouse, Rat
Host Species:	Mouse

Product Details

Background:	MEK1 antibodies detect the MEK1 isoform. Mitogen-activated protein kinase kinase 1, also known as MKK or MEK1, is an integral component of the MAP kinase cascade that regulates cell growth and differentiation. This pathway also plays a key role in synaptic plasticity in the brain. Activated MEK 1 acts as a dual specificity kinase phosphorylating both a threonine and a tyrosine residue on MAP kinase. MEK1 and MEK2 are about 80% identical to each other, and nearly identical within the kinase domain. The MEK1 antibody is ideal for investigators involved in Neuroscience, Cell Signaling and Cancer Research.
Synonyms:	mouse anti-MEK1 antibody, MAP2K, MEK, MEK 1, MKK1, PRKMK1, MEK-1 Antibody
Host Species:	Mouse
Clonality:	Monoclonal
Clone ID:	13B6.G12
Format:	IgG

Target Details

Gene Name:	MAP2K1
Reactivity:	Human, Mouse, Rat
Immunogen Type:	Conjugated Peptide
Immunogen:	Anti-MEK1 Monoclonal Antibody was produced in mice by repeated immunizations with synthetic peptide corresponding to amino acid residues near the C-terminus conjugated to KLH.

Purity/Specificity: This protein A purified mouse monoclonal antibody reacts specifically with human MEK1. Anti-MEK1 is purified from tissue culture supernatant by protein A purification. Cross reactivity is expected to occur with human, mouse, and rat based on sequence identity of the peptide immunogen. This antibody does not react with the MEK2 isoform.

Relevant Links:

- [UniProtKB - Q02750](#)

Application Details

Tested Applications: ELISA, WB

Suggested Applications: IP (Based on references)

Application Note: Anti-MEK 1 (MOUSE) antibody is tested in ELISA and Western Blotting. Specific conditions of reactivity should be optimized by the end user. Expect a band of approximately 43.5 kDa.

Assay Dilutions: All assays should be optimized by the user. Recommended dilutions (if any) may be listed below.

ELISA: 1:40,000

WB: 1µg/mL

Formulation

Physical State: Liquid (sterile filtered)

Concentration: 1.0mg/ml by UV absorbance at 280 nm

Buffer: 0.02 M Potassium Phosphate, 0.15 M Sodium Chloride, pH 7.2

Preservative: 0.01% (w/v) Sodium Azide

Stabilizer: None

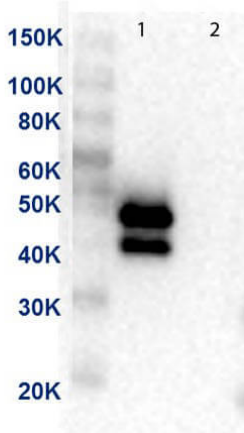
Shipping & Handling

Shipping Condition: Dry Ice

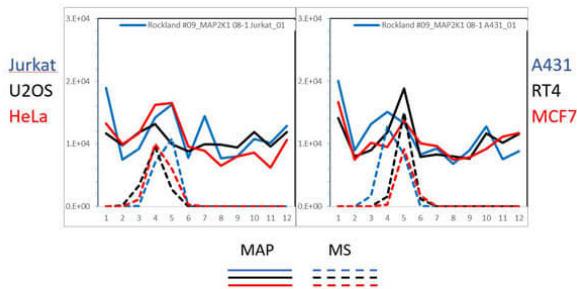
Storage Condition: Store vial at -20° C prior to opening. This product is stable at 4° C as an undiluted liquid. For extended storage, aliquot contents and freeze at -20° C or below. Avoid cycles of freezing and thawing. Dilute only prior to immediate use.

Expiration: Expiration date is one (1) year from date of receipt.

Images


Western Blot

Western Blot of Anti-MEK1 Antibody. Lane 1: MEK-1 recombinant protein. Lane 2: MEK-2 recombinant protein. Load: 50ng per lane. Primary Antibody: Anti-MEK1 supernatant clone neat over night at 4°C. Secondary Antibody: Anti-mouse HRP at 1:40,000 dilution.


PAGE-MAP

PAGE-MAP (microsphere affinity proteomics) of Mouse Anti-MEK1/MAP2K1 Antibody. (Catalog Number: 200-301-GQ0, Lot Number: 38106). Antibody array western blot binding of gelfree size separated fractions of multiple lysates (solid lines) and shotgun mass spectroscopy identification (dashed lines) of the target band run in parallel correlate confirming the specificity of this antibody against MEK1/MAP2K1. Data was provided by the Lund-Johansen lab of Oslo University Hospital. For more information on PAGE-MAP/IP-MS identification of antibody specificity and its large-scale implementation for antibody validation see Sikorski et. al., (2018) Nature Methods 15, 909-912.

References

- Sikorski et al. A high-throughput pipeline for validation of antibodies. *Nature Methods* (2018)

Disclaimer

This product is for research use only and is not intended for therapeutic or diagnostic applications. Please contact a technical service representative for more information. All products of animal origin manufactured by Rockland Immunochemicals are derived from starting materials of North American origin. Collection was performed in United States Department of Agriculture (USDA) inspected facilities and all materials have been inspected and certified to be free of disease and suitable for exportation. All properties listed are typical characteristics and are not specifications. All suggestions and data are offered in good faith but without guarantee as conditions and methods of use of our products are beyond our control. All claims must be made within 30 days following the date of delivery. The prospective user must determine the suitability of our materials before adopting them on a commercial scale. Suggested uses of our products are not recommendations to use our products in violation of any patent or as a license under any patent of Rockland Immunochemicals, Inc. If you require a commercial license to use this material and do not have one, then return this material, unopened to: Rockland Inc., P.O. BOX 5199, Limerick, Pennsylvania, USA.