

**Datasheet for 200-301-GJ1****GSTZ1 Antibody****Overview**

<b>Description:</b>	Anti-GSTZ1 (MOUSE) Monoclonal Antibody - 200-301-GJ1
<b>Item No.:</b>	200-301-GJ1
<b>Size:</b>	100 µg
<b>Applications:</b>	ELISA, WB
<b>Reactivity:</b>	Human
<b>Host Species:</b>	Mouse

**Product Details**

<b>Background:</b>	Rockland produces a wide range of human GST antibodies in our laboratories. Select appropriate GST antibodies for your research by isotype, epitope, applications and species reactivity. There are 22 members of the human GST family of proteins. GST is responsible for the conjugation of reduced glutathione to a wide number of exogenous and endogenous hydrophobic electrophiles. The amino acid sequence GST is highly conserved in most organisms including mammals. GSTs proteins are typically homodimeric, with both heterologous GST dimers have been observed. GST monomers have an average molecular weight of approximately 25-28 kDa in size. Note a different form of non-human GST (Glutathione-S-Transferase) is used as a protein expression tag commonly in molecular biology applications. All anti-GST antibodies may not react with recombinant GST-fusion proteins.
<b>Synonyms:</b>	mouse anti-GSTZ1 antibody, mouse anti-GST-Z1 antibody, GST, Glutathione S-Transferases, Z1 Antibody, GSTZ1
<b>Host Species:</b>	Mouse
<b>Clonality:</b>	Monoclonal
<b>Clone ID:</b>	24E9.G9.G8
<b>Format:</b>	IgG1

**Target Details**

<b>Gene Name:</b>	GSTZ1
<b>Reactivity:</b>	Human

<b>Immunogen Type:</b>	Recombinant Protein
<b>Immunogen:</b>	This Protein A purified antibody was prepared by repeated immunizations in mice with Z1 Protein
<b>Purity/Specificity:</b>	This product is purified from roller bottle culture by Protein A chromatography followed by extensive dialysis against the buffer stated above. Reacts specifically with Z1 protein. Cross reactivity from other sources has not been determined.
<b>Relevant Links:</b>	<ul style="list-style-type: none"><li><a href="#">UniProtKB - O43708</a></li></ul>

## Application Details

<b>Tested Applications:</b>	ELISA, WB
<b>Application Note:</b>	Anti-GSTZ1 antibody has been tested by ELISA and Western Blot. Suitable for most immunological techniques requiring high titer binding and lot-to-lot consistency. Specific conditions for reactivity should be optimized by the end user.
<b>Assay Dilutions:</b>	All assays should be optimized by the user. Recommended dilutions (if any) may be listed below.
<b>ELISA:</b>	1:50,000 - 1:200,000
<b>IHC:</b>	User Optimized
<b>IP:</b>	User Optimized
<b>WB:</b>	1:500 - 1:1000

## Formulation

<b>Physical State:</b>	Liquid (sterile filtered)
<b>Concentration:</b>	1.0 mg/ml by UV absorbance at 280 nm
<b>Buffer:</b>	0.02 M Potassium Phosphate, 0.15 M Sodium Chloride, pH 7.2
<b>Preservative:</b>	0.01% (w/v) Sodium Azide
<b>Stabilizer:</b>	None

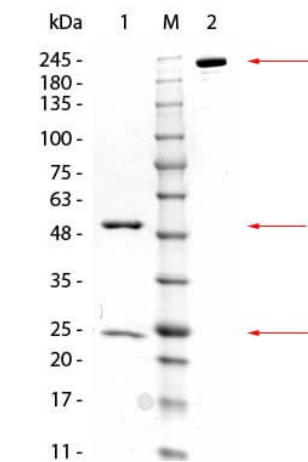
## Shipping & Handling

<b>Shipping Condition:</b>	Dry Ice
----------------------------	---------

**Storage Condition:** Store vial at -20° C prior to opening. Aliquot contents and freeze at -20° C or below for extended storage. Avoid cycles of freezing and thawing. Centrifuge product if not completely clear after standing at room temperature. This product is stable for several weeks at 4° C as an undiluted liquid. Dilute only prior to immediate use.

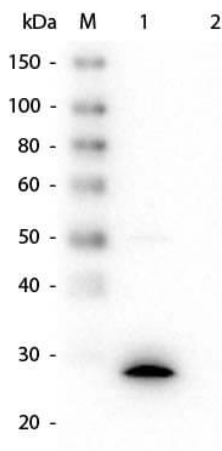
**Expiration:** Expiration date is one (1) year from date of receipt.

## Images



### SDS-PAGE

SDS-PAGE of Mouse anti-GSTZ1 Monoclonal Antibody. Lane 1: Reduced Mouse anti-GSTZ1 Monoclonal Antibody. Lane M: 3 µL OPAL Pre-stained Marker (p/n MB-210-0500). Lane 2: Non-reduced Mouse anti-GSTZ1 Monoclonal Antibody. Load: 1 µg per lane. Predicted/Observed size: Non-reduced at 160 kDa/observed at 180-200 kDa; Reduced at 55, 25 kDa. Non-reduced migrates at slightly higher molecular weight.



### Western Blot

Western Blot of Mouse anti-GSTZ1 Monoclonal Antibody. Lane 1: Recombinant GSTZ1 protein. Lane 2: GST (p/n 000-001-200). Load: 50 ng per lane. Primary antibody: Mouse anti-GSTZ1 Monoclonal Antibody at 1:1,000 overnight at 4°C. Secondary antibody: HRP Mouse Secondary Antibody (p/n 610-403-C46) at 1:40,000 for 30 min at RT. Block: MB-070 for 30 min at RT. Predicted/Observed size: 27 kDa, 27 kDa for GSTZ1.

## Disclaimer

This product is for research use only and is not intended for therapeutic or diagnostic applications. Please contact a technical service representative for more information. All products of animal origin manufactured by Rockland Immunochemicals are derived from starting materials of North American origin. Collection was performed in United States Department of Agriculture (USDA) inspected facilities and all materials have been inspected and certified to be free of disease and suitable for exportation. All properties listed are typical characteristics and are not specifications. All suggestions and data are offered in good faith but without guarantee as conditions and methods of use of our products are beyond our control. All claims must be made within 30 days following the date of delivery. The prospective user must determine the suitability of our materials before adopting them on a commercial scale. Suggested uses of our products are not recommendations to use our products in violation of any patent or as a license under any patent of Rockland Immunochemicals, Inc. If you require a commercial license to use this material and do not have one, then return this material, unopened to: Rockland Inc., P.O. BOX 5199, Limerick, Pennsylvania, USA.