

**Datasheet for 200-301-FW6****Vinculin Antibody [7E10]****Overview**

<b>Description:</b>	Anti-Vinculin (MOUSE) Antibody - 200-301-FW6
<b>Item No.:</b>	200-301-FW6
<b>Size:</b>	100 µg
<b>Applications:</b>	ELISA, WB
<b>Reactivity:</b>	Human, Mouse, Rat, Chicken, Rabbit
<b>Host Species:</b>	Mouse

**Product Details**

<b>Background:</b>	Vinculin is a cytoskeletal protein that plays an important role in the regulation of focal adhesions and embryonic development (1). Three structural vinculin domains include an amino-terminal head, a short flexible proline-rich region and a carboxy-terminal tail (2). Expression of vinculin were shown to be affected by the level of actin expression (2,3). Vinculin deficiencies are associated with a decrease in cell adhesion and an increase in cell motility, suggesting a possible role in metastatic growth (4). Defects in VCL are the cause of cardiomyopathy dilated type 1W (CMD1W) (5).
<b>Synonyms:</b>	CMD1W, CMH15, Metavinculin, MVCL
<b>Host Species:</b>	Mouse
<b>Clonality:</b>	Monoclonal
<b>Clone ID:</b>	[7E10]
<b>Format:</b>	IgG

**Target Details**

<b>Gene Name:</b>	VCL
<b>Reactivity:</b>	Human, Mouse, Rat, Chicken, Rabbit
<b>Immunogen Type:</b>	Conjugated Peptide
<b>Immunogen:</b>	Anti-Vinculin antibody was prepared from whole mouse serum produced by repeated immunizations with a 23 amino acid peptide near the N-terminus of human Vinculin.

<b>Purity/Specificity:</b>	Anti-Vinculin antibody is purified via Protein A purification. Vinculin antibody is human, mouse, rat, rabbit and chicken reactive. At least three isoforms of Vinculin are known to exist.
<b>Relevant Links:</b>	<ul style="list-style-type: none"><li>• <a href="#">UniProtKB - P18206</a></li><li>• <a href="#">GeneID - 7414</a></li><li>• <a href="#">NCBI - NP_003364.1</a></li></ul>

## Application Details

<b>Tested Applications:</b>	ELISA, WB
<b>Application Note:</b>	Anti-Vinculin Antibody has been tested for use in ELISA and Western Blotting. Specific conditions for reactivity should be optimized by the end user. Expect a band at approximately 124 kDa in Western Blots of specific cell lysates and tissues. Validated in human, mouse, rat, chicken, and rabbit samples. All other applications and species not yet tested.
<b>Assay Dilutions:</b>	All assays should be optimized by the user. Recommended dilutions (if any) may be listed below.
<b>ELISA:</b>	1:500-1:10,000
<b>WB:</b>	0.5-1 µg/mL

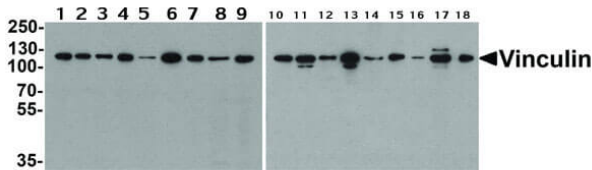
## Formulation

<b>Physical State:</b>	Liquid (sterile filtered)
<b>Concentration:</b>	1.0 mg/mL by UV absorbance at 280 nm
<b>Buffer:</b>	0.01 M Sodium Phosphate, 0.25 M Sodium Chloride, pH 7.2
<b>Preservative:</b>	0.02% (w/v) Sodium Azide
<b>Stabilizer:</b>	None

## Shipping & Handling

<b>Shipping Condition:</b>	Dry Ice
<b>Storage Condition:</b>	Store vial at -20° C prior to opening. Aliquot contents and freeze at -20° C or below for extended storage. Avoid cycles of freezing and thawing. Centrifuge product if not completely clear after standing at room temperature. This product is stable for several weeks at 4° C as an undiluted liquid. Dilute only prior to immediate use.
<b>Expiration:</b>	Expiration date is one (1) year from date of receipt.

## Images



### Western Blot

Western Blot of Mouse anti-Vinculin antibody. Lane 1: 293 (p/n W09-000-365). Lane 2: A431 (p/n W09-000-361). Lane 3: A549 (p/n W09-001-372). Lane 4: HeLa (p/n W09-000-364). Lane 5: HepG2 (p/n W09-001-GJ5). Lane 6: K562 (p/n W09-001-GJ7). Lane 7: 3T3 (p/n W10-000-358). Lane 8: Raji (p/n W09-001-368). Lane 9: U937 (p/n W09-001-GL1). Lane 10: rat heart (p/n W12-000-T087). Lane 11: mouse lung tissue lysate. Lane 12: rat lung tissue lysate. Lane 13: mouse spleen (p/n W10-000-T029). Lane 14: rat spleen (p/n W12-000-T103). Lane 15: rabbit spleen tissue lysate. Lane 16: mouse brain (p/n W10-000-T004). Lane 17: rabbit brain tissue lysate. Lane 18: chicken spleen tissue lysate. Primary antibody: Anti-Vinculin at 1 $\mu$ g/mL O/N at 4 $^{\circ}$ C. Secondary antibody: Mouse HRP antibody. Block: 5% BLOTTO. Predicted/Observed size: 117 kDa, 120 kDa for Vinculin.

## Disclaimer

This product is for research use only and is not intended for therapeutic or diagnostic applications. Please contact a technical service representative for more information. All products of animal origin manufactured by Rockland Immunochemicals are derived from starting materials of North American origin. Collection was performed in United States Department of Agriculture (USDA) inspected facilities and all materials have been inspected and certified to be free of disease and suitable for exportation. All properties listed are typical characteristics and are not specifications. All suggestions and data are offered in good faith but without guarantee as conditions and methods of use of our products are beyond our control. All claims must be made within 30 days following the date of delivery. The prospective user must determine the suitability of our materials before adopting them on a commercial scale. Suggested uses of our products are not recommendations to use our products in violation of any patent or as a license under any patent of Rockland Immunochemicals, Inc. If you require a commercial license to use this material and do not have one, then return this material, unopened to: Rockland Inc., P.O. BOX 5199, Limerick, Pennsylvania, USA.