

Datasheet for 200-301-F08**CAV1.2 Antibody****Overview**

Description:	Anti-CAV1.2 (MOUSE) Monoclonal Antibody - 200-301-F08
Item No.:	200-301-F08
Size:	100 µg
Applications:	IF, IHC, IP, WB, Microarray
Reactivity:	Human, Mouse, Rat
Host Species:	Mouse

Product Details

Background:	Specifically, Cav1.2 is a cardiac L-type calcium channel, and is important for excitation and contraction of the heart. It may be associated with a variant of Long QT syndrome called Timothy's syndrome and also with Brugada syndrome. Some references also suggest it is related to bipolar disease as well.
Synonyms:	Voltage-dependent L-type calcium channel subunit alpha-1C, L type, alpha-1 polypeptide, isoform 1, cardiac muscle, Smooth muscle calcium channel blocker receptor, CACB-receptor, Voltage-gated calcium channel subunit alpha Cav1.2
Host Species:	Mouse
Clonality:	Monoclonal
Clone ID:	S57
Format:	IgG2b

Target Details

Gene Name:	CACNA1C
Reactivity:	Human, Mouse, Rat
Immunogen Type:	Recombinant Protein
Immunogen:	Cav1.2 Antibody was produced in mice by repeated immunizations with a fusion protein (intracellular carboxyl terminus) of rabbit Cav1.2.

Purity/Specificity: Anti-CAV1.2 Antibody was purified by Protein G chromatography. A BLAST analysis was used to suggest cross-reactivity with CAV1.2 from Human, Rat, and Mouse based on 100% homology with the immunizing sequence. Cross-reactivity with CAV1.2 from other sources has not been determined. Channels and Transporters research.

Relevant Links:

- [NCBI - NP_001129994.1](#)
- [GeneID - 100144322](#)
- [UniProtKB - P15381](#)

Application Details

Tested Applications: IF, IHC, IP, WB

Suggested Applications: Microarray (Based on references)

Application Note: Anti-CAV1.2 Antibody has been tested in WB, IP, ICC/IF, and IHC-P and is suitable for use in microarray. Expect a band approximately ~240kDa (varies with cell background due to glycosylation) on specific lysates. Specific conditions for reactivity should be optimized by the end user.

Assay Dilutions: All assays should be optimized by the user. Recommended dilutions (if any) may be listed below.

IF: 1.0-10ug/mL

IHC: 0.1-1.0ug/mL

IP: User Optimized

WB: 1-10ug/mL

Formulation

Physical State: Liquid (sterile filtered)

Concentration: 1.0 mg/mL by UV absorbance at 280 nm

Buffer: 1X PBS, pH 7.4

Preservative: 0.09% (w/v) Sodium Azide

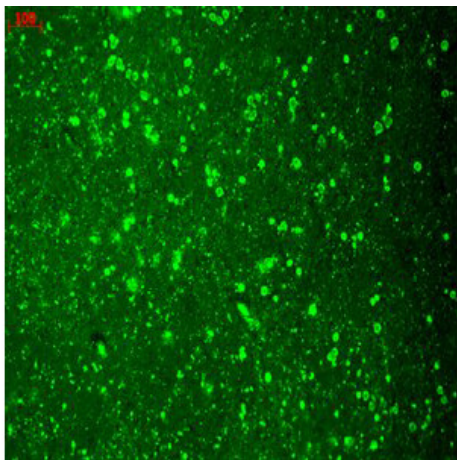
Stabilizer: 50% (v/v) Glycerol

Shipping & Handling

Shipping Condition: Dry Ice

Storage Condition:	Store vial at -20° C prior to opening. Aliquot contents and freeze at -20° C or below for extended storage. Avoid cycles of freezing and thawing. Centrifuge product if not completely clear after standing at room temperature. This product is stable for several weeks at 4° C as an undiluted liquid. Dilute only prior to immediate use.
Expiration:	Expiration date is one (1) year from date of receipt.

Images



Immunofluorescence Microscopy

Immunofluorescence Microscopy of mouse anti-CAV 1.2 antibody. Tissue: Human hippocampus tissues. Fixation: N/A. Primary antibody: anti-CAV 1.2 for 1h at RT. Secondary antibody: Fluorescein mouse secondary antibody at 1:10,000 for 45 min at RT. Localization: Membrane. Staining: CAV 1.2 as precipitated green signal.

Disclaimer

This product is for research use only and is not intended for therapeutic or diagnostic applications. Please contact a technical service representative for more information. All products of animal origin manufactured by Rockland Immunochemicals are derived from starting materials of North American origin. Collection was performed in United States Department of Agriculture (USDA) inspected facilities and all materials have been inspected and certified to be free of disease and suitable for exportation. All properties listed are typical characteristics and are not specifications. All suggestions and data are offered in good faith but without guarantee as conditions and methods of use of our products are beyond our control. All claims must be made within 30 days following the date of delivery. The prospective user must determine the suitability of our materials before adopting them on a commercial scale. Suggested uses of our products are not recommendations to use our products in violation of any patent or as a license under any patent of Rockland Immunochemicals, Inc. If you require a commercial license to use this material and do not have one, then return this material, unopened to: Rockland Inc., P.O. BOX 5199, Limerick, Pennsylvania, USA.