

Datasheet for 200-301-EG2

Seasonal H1N1 Neuraminidase Antibody [6F4C8]**Overview**

| | |
|----------------------|---|
| Description: | Anti-Seasonal H1N1 Neuraminidase (MOUSE) Antibody - 200-301-EG2 |
| Item No.: | 200-301-EG2 |
| Size: | 100 µg |
| Applications: | ELISA |
| Reactivity: | Virus |
| Host Species: | Mouse |

Product Details

| | |
|----------------------|--|
| Background: | Influenza A virus has one of sixteen possible hemagglutinin (HA) surface proteins and one of nine possible neuraminidase (NA) surface proteins. In early 2009, a novel H1N1 swine-origin influenza (S-OIV) A virus was identified in specimens obtained from patients in Mexico and the United States. The genetic make-up of this swine flu virus is unlike any other: it is an H1N1 strain that combines a triple assortment first identified in 1998 including human, swine, and avian influenza with two new pig H3N2 virus genes from Eurasia, themselves of recent human origin. |
| Synonyms: | Seasonal H1N1 Neuraminidase Antibody [6F4C8] |
| Host Species: | Mouse |
| Clonality: | Monoclonal |
| Clone ID: | [6F4C8] |
| Format: | IgG2b |

Target Details

| | |
|------------------------|---|
| Gene Name: | NA |
| Reactivity: | Virus |
| Immunogen Type: | Conjugated Peptide |
| Immunogen: | Anti-neuraminidase antibody was produced in mice by repeated immunizations with a synthetic peptide from the seasonal influenza (H1N1) neuraminidase protein. |

Purity/Specificity: Anti-Seasonal H1N1 Neuraminidase Monoclonal Antibody was Protein A purified. Cross reactivity with Seasonal H1N1 Neuraminidase [6F4C8] from other sources has not been determined.

Relevant Links:

- [UniProtKB - B1AGS8](#)
- [NCBI - ACA33620](#)

Application Details

Tested Applications: ELISA

Application Note: Anti-Seasonal H1N1 Neuraminidase Antibody has been tested for use in ELISA. Specific conditions for reactivity should be optimized by the end user. Expect a band at approximately 52 kDa in Western Blots of specific cell lysates and tissues.

Assay Dilutions: All assays should be optimized by the user. Recommended dilutions (if any) may be listed below.

ELISA: 1 µg/mL

Formulation

Physical State: Liquid (sterile filtered)

Concentration: 1.0 mg/ml by UV absorbance at 280 nm

Buffer: 0.01 M Sodium Phosphate, 0.25 M Sodium Chloride, pH 7.2

Preservative: 0.02% (w/v) Sodium Azide

Stabilizer: None

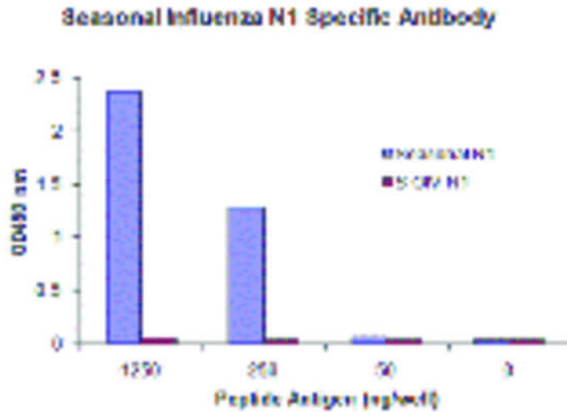
Shipping & Handling

Shipping Condition: Dry Ice

Storage Condition: Store vial at -20° C prior to opening. Aliquot contents and freeze at -20° C or below for extended storage. Avoid cycles of freezing and thawing. Centrifuge product if not completely clear after standing at room temperature. This product is stable for several weeks at 4° C as an undiluted liquid. Dilute only prior to immediate use.

Expiration: Expiration date is one (1) year from date of receipt.

Images

**ELISA**

ELISA of Mouse anti-A N1 antibody. Antigen:(H1N1) N1.
Primary antibody: Seasonal Influenza A N1 antibody. Does not recognize and Swine origin influenza A (S-OIV, H1N1) N1.
Secondary antibody: Peroxidase mouse secondary antibody.

Disclaimer

This product is for research use only and is not intended for therapeutic or diagnostic applications. Please contact a technical service representative for more information. All products of animal origin manufactured by Rockland Immunochemicals are derived from starting materials of North American origin. Collection was performed in United States Department of Agriculture (USDA) inspected facilities and all materials have been inspected and certified to be free of disease and suitable for exportation. All properties listed are typical characteristics and are not specifications. All suggestions and data are offered in good faith but without guarantee as conditions and methods of use of our products are beyond our control. All claims must be made within 30 days following the date of delivery. The prospective user must determine the suitability of our materials before adopting them on a commercial scale. Suggested uses of our products are not recommendations to use our products in violation of any patent or as a license under any patent of Rockland Immunochemicals, Inc. If you require a commercial license to use this material and do not have one, then return this material, unopened to: Rockland Inc., P.O. BOX 5199, Limerick, Pennsylvania, USA.