

Datasheet for 200-301-E40**Syntaxin Antibody****Overview**

Description:	Anti-Syntaxin (MOUSE) Monoclonal Antibody - 200-301-E40
Item No.:	200-301-E40
Size:	100 µL
Applications:	IHC, WB
Reactivity:	Human, Rat, Hamster, Pig
Host Species:	Mouse

Product Details

Background:	Syntaxin antibody detects Syntaxin-1A protein which is part of a family of proteins involved in the docking of synaptic vesicles with the plasma membrane. Syntaxin, along with synaptobrevin and SNAP-25, forms the SNARE complex which mediates synaptic vesicle fusion and exocytosis. Binding of Munc18-1 to the N-terminus of syntaxin 1 has been demonstrated to be essential for exocytic membrane fusion. Decreased levels of phosphorylated syntaxin 1 in the prefrontal cortex have recently been correlated with schizophrenia. Anti-Syntaxin Antibody is ideal for investigators involved in Cell Signaling, Neuroscience, Signal Transduction research.
Synonyms:	Neuron-specific antigen HPC-1, Syntaxin-1A
Host Species:	Mouse
Clonality:	Monoclonal
Clone ID:	SP8
Format:	IgG1

Target Details

Gene Name:	STX1A
Reactivity:	Human, Rat, Hamster, Pig
Immunogen Type:	Native Protein
Immunogen:	Anti-Syntaxin Monoclonal Antibody was produced in mouse by repeated immunizations with Synaptic immunoprecipitate (crude) from human brain.

Purity/Specificity: Anti-Syntaxin Monoclonal Antibody is directed against Syntaxin. Syntaxin antibody was purified by Protein G chromatography from cell culture supernatant. Reactivity is expected from rat, pig and hamster. Cross reactivity with syntaxin from other species has not been determined.

Relevant Links:

- [UniProtKB - Q16623](#)
- [GeneID - 6804](#)
- [NCBI - AAA20940.1](#)

Application Details

Tested Applications: IHC, WB

Application Note: Anti-Syntaxin antibody is suitable for use in Western Blotting and IHC. Expect a band or approximately 36 kDa in size corresponding to syntaxin proteins in Western blot of rat brain lysate. Tested for use in immunohistochemistry on formalin fixed, vibratome sections. Does not work on paraffin sections. Researchers should determine optimal titers for applications that are not stated below.

Assay Dilutions: All assays should be optimized by the user. Recommended dilutions (if any) may be listed below.

IHC: 1:100

WB: 1:1000

Formulation

Physical State: Liquid

Buffer: 0.01 M HEPES, 0.15 M Sodium Chloride, pH 7.5

Stabilizer: 0.1 mg/ml Bovine Serum Albumin (BSA) - IgG and Protease free, 50% (v/v) Glycerol

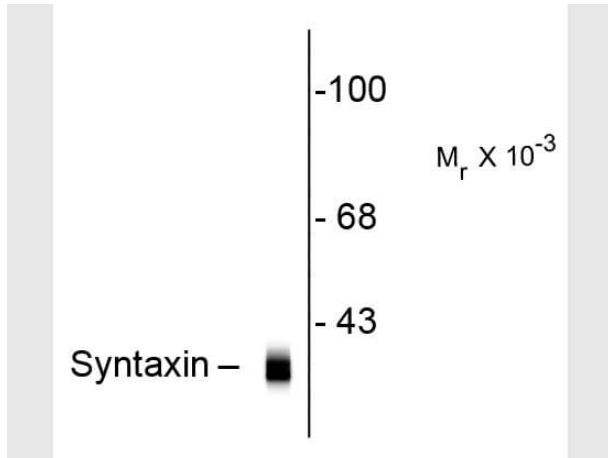
Shipping & Handling

Shipping Condition: Dry Ice

Storage Condition: Store vial at -20° C prior to opening. This product is stable at 4° C as an undiluted liquid. For extended storage, aliquot contents and freeze at -20° C or below. Avoid cycles of freezing and thawing. Dilute only prior to immediate use.

Expiration: Expiration date is one (1) year from date of receipt.

Images

**Western Blot**

Western Blot of Mouse anti-Syntaxin antibody. Lane 1: rat cortex lysate. Lane 2: none. Load: 10 µg per lane. Primary antibody: Syntaxin antibody at 1:1,000 for overnight at 4°C. Secondary antibody: IRDye800™ mouse secondary antibody at 1:10,000 for 45 min at RT. Block: 5% BLOTTO overnight at 4°C. Predicted/Observed size: 36 kDa for Syntaxin. Other band(s): none.

Disclaimer

This product is for research use only and is not intended for therapeutic or diagnostic applications. Please contact a technical service representative for more information. All products of animal origin manufactured by Rockland Immunochemicals are derived from starting materials of North American origin. Collection was performed in United States Department of Agriculture (USDA) inspected facilities and all materials have been inspected and certified to be free of disease and suitable for exportation. All properties listed are typical characteristics and are not specifications. All suggestions and data are offered in good faith but without guarantee as conditions and methods of use of our products are beyond our control. All claims must be made within 30 days following the date of delivery. The prospective user must determine the suitability of our materials before adopting them on a commercial scale. Suggested uses of our products are not recommendations to use our products in violation of any patent or as a license under any patent of Rockland Immunochemicals, Inc. If you require a commercial license to use this material and do not have one, then return this material, unopened to: Rockland Inc., P.O. BOX 5199, Limerick, Pennsylvania, USA.