

Datasheet for 200-301-CW6**MyD88 Antibody [2E9C2]****Overview**

Description:	Anti-MyD88 (MOUSE) Antibody - 200-301-CW6
Item No.:	200-301-CW6
Size:	100 µg
Applications:	ELISA, IF, IHC, WB
Reactivity:	Human, Mouse
Host Species:	Mouse

Product Details

Background: The pro-inflammatory cytokine IL-1 induced cellular response requires IL-1 receptor complex including IL-1RI and IL-1RAcP. MyD88 has been identified as an adapter molecule in the IL-1 signaling pathway. MyD88 associates with and recruits IRAK to the IL-1 receptor complex in response to IL-1 treatment and dominant negative form of MyD88 attenuates IL-1R-mediated NF-kB activation. MyD88 is also employed as a regulator molecule by IL-18 receptor and human Toll receptor, which are members in the Toll/IL-1R family of receptors. Targeted disruption of the MyD88 gene results in lose of cellular responses to IL-1 and IL-18, and MyD88-deficient mice lack responses to bacterial product LPS that employs Toll-like receptors 2 and 4 (TLR2 and TLR4) as the signaling receptors. MyD88 is a general adapter protein for the Toll/IL-1R family of receptors and plays an important role in the inflammatory response induced by cytokines IL-1 and IL-18 and endotoxin. MyD88 gene is expressed in many tissues.

Synonyms:	MyD88 Antibody [2E9C2] , MYD88D
Host Species:	Mouse
Clonality:	Monoclonal
Clone ID:	[2E9C2]
Format:	IgG2b

Target Details

Gene Name:	MYD88
Reactivity:	Human, Mouse

Immunogen Type:	Recombinant Protein
Immunogen:	Anti-MyD88 antibody was produced in mice by repeated immunizations with a recombinant protein corresponding to amino acids 176 to 280 of human MyD88.
Purity/Specificity:	Anti-MyD88 Monoclonal Antibody was Protein A purified. Cross reactivity with MyD88 [2E9C2] from other sources has not been determined.
Relevant Links:	<ul style="list-style-type: none">• UniProtKB - Q99836• GenelD - 4615• NCBI - U70451

Application Details

Tested Applications:	ELISA, IF, IHC, WB
Application Note:	Anti-MyD88 Antibody has been tested for use in ELISA, Western Blotting, Immunohistochemistry-P and Immunofluorescence. Specific conditions for reactivity should be optimized by the end user. Expect a band at approximately 33 kDa in Western Blots of specific cell lysates and tissues. WB validated in mouse samples, IHC validated in human samples. All other applications and species not yet tested.
Assay Dilutions:	All assays should be optimized by the user. Recommended dilutions (if any) may be listed below.
ELISA:	1:20,000
IF:	20 µg/mL
IHC:	2.5 µg/mL
WB:	2 µg/mL

Formulation

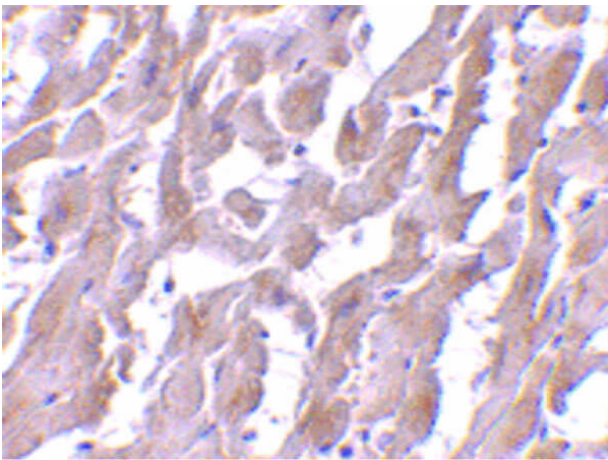
Physical State:	Liquid (sterile filtered)
Concentration:	1 mg/mL by UV absorbance at 280 nm
Buffer:	0.01 M Sodium Phosphate, 0.25 M Sodium Chloride, pH 7.2
Preservative:	0.02% (w/v) Sodium Azide
Stabilizer:	None

Shipping & Handling

Shipping Condition:	Dry Ice
----------------------------	---------

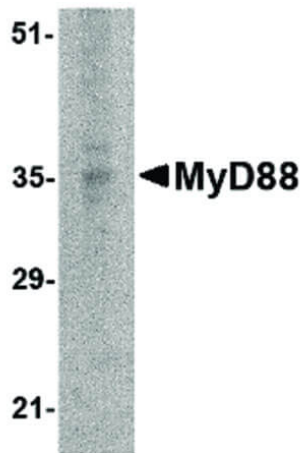
Storage Condition:	Store vial at -20° C prior to opening. Aliquot contents and freeze at -20° C or below for extended storage. Avoid cycles of freezing and thawing. Centrifuge product if not completely clear after standing at room temperature. This product is stable for several weeks at 4° C as an undiluted liquid. Dilute only prior to immediate use.
Expiration:	Expiration date is one (1) year from date of receipt.

Images



Immunohistochemistry

Immunohistochemistry of Mouse anti-MyD88 antibody.
Tissue: human heart. Primary antibody: MyD88 antibody at 2.5 µg/mL. Secondary antibody: Peroxidase mouse secondary antibody at 1:2,500. Localization: MyD88 is cytoplasmic.



Western Blot

Western Blot of Mouse anti-MyD88 antibody. Lane A: EL4 whole cell lysate. Primary antibody: EndoG antibody at 2 µg/mL overnight at 4°C. Secondary antibody: Mouse HRP secondary antibody. Block: 5% BLOTTO. Predicted/Observed size: 33 kDa and 5 isoforms, 35 kDa for MyD88.

Disclaimer

This product is for research use only and is not intended for therapeutic or diagnostic applications. Please contact a technical service representative for more information. All products of animal origin manufactured by Rockland Immunochemicals are derived from starting materials of North American origin. Collection was performed in United States Department of Agriculture (USDA) inspected facilities and all materials have been inspected and certified to be free of disease and suitable for exportation. All properties listed are typical characteristics and are not specifications. All suggestions and data are offered in good faith but without guarantee as conditions and methods of use of our products are beyond our control. All claims must be made within 30 days following the date of delivery. The prospective user must determine the suitability of our materials before adopting them on a commercial scale. Suggested uses of our products are not recommendations to use our products in violation of any patent or as a license under any patent of Rockland Immunochemicals, Inc. If you require a commercial license to use this material and do not have one, then return this material, unopened to: Rockland Inc., P.O. BOX 5199, Limerick, Pennsylvania, USA.