

Datasheet for 200-301-BQ2

Hax1a Antibody [8F9G7]**Overview**

Description:	Anti-Hax1a (MOUSE) Antibody - 200-301-BQ2
Item No.:	200-301-BQ2
Size:	100 µg
Applications:	ELISA, WB
Reactivity:	Human, Mouse, Rat
Host Species:	Mouse

Product Details

Background: The HS-1 associated protein X-1 (Hax1) was initially identified in a yeast two-hybrid assay on the basis of its ability to bind to the hemopoietic cell-specific protein 1 (HS-1). Hax1 possesses anti-apoptotic activity and is structurally related to Bcl-2 family members, including the presence of BH1- and BH2-like domains. It has recently been shown to interact with HIV viral protein R (Vpr), a protein required for viral pathogenesis of HIV and linked to T-cell apoptosis through activation of caspases 3 and 9. Other studies indicate that Hax1-mediated processing of HtrA2 (also known as Omi) by the mitochondrial protease PARL allows survival of lymphocytes and neurons when cytokines are limiting. At least four isoforms of Hax1 are known to exist. This antibody is expected to recognize the longest isoform (Hax1a) as well as the shortest.

Synonyms:	Hax1a Antibody [8F9G7] , SCN3, HS1BP1, HCLSBP1
Host Species:	Mouse
Clonality:	Monoclonal
Clone ID:	[8F9G7]

Target Details

Gene Name:	HAX1
Reactivity:	Human, Mouse, Rat
Immunogen Type:	Conjugated Peptide
Immunogen:	Anti-Hax1a antibody was produced by repeated immunizations in mice with a 15 amino acid synthetic peptide near the N-terminus of human Hax1a.

Purity/Specificity: Anti-Hax1a Monoclonal Antibody was Protein G purified. Cross reactivity with Hax1a [8F9G7] from other sources has not been determined.

Relevant Links:

- [UniProtKB - O00165](#)
- [GeneID - 10456](#)
- [NCBI - NP_006109](#)

Application Details

Tested Applications: ELISA, WB

Application Note: Anti-Hax1a Antibody has been tested for use in ELISA and Western Blotting. Specific conditions for reactivity should be optimized by the end user. Expect a band at approximately 32 kDa in Western Blots of specific cell lysates and tissues. Validated in human samples. All other applications and species not yet tested.

Assay Dilutions: All assays should be optimized by the user. Recommended dilutions (if any) may be listed below.

ELISA: 1:10,000 - 1:20,000

WB: 1-2 µg/mL

Formulation

Physical State: Liquid (sterile filtered)

Concentration: 1 mg/mL by UV absorbance at 280 nm

Buffer: 0.01 M Sodium Phosphate, 0.25 M Sodium Chloride, pH 7.2

Preservative: 0.02% (w/v) Sodium Azide

Stabilizer: None

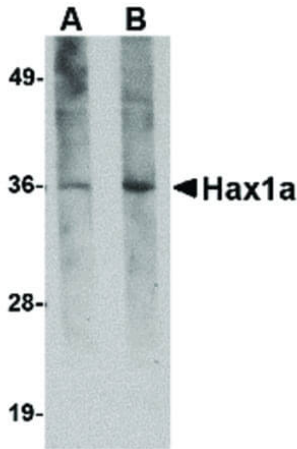
Shipping & Handling

Shipping Condition: Dry Ice

Storage Condition: Store vial at -20° C prior to opening. Aliquot contents and freeze at -20° C or below for extended storage. Avoid cycles of freezing and thawing. Centrifuge product if not completely clear after standing at room temperature. This product is stable for several weeks at 4° C as an undiluted liquid. Dilute only prior to immediate use.

Expiration: Expiration date is one (1) year from date of receipt.

Images



Western Blot

Western Blot of Mouse anti-Hax1a antibody. Lane A: human brain tissue lysate at 1 µg/mL. Lane B: human brain tissue lysate at 2 µg/mL. Primary antibody: Hax1a antibody overnight at 4°C. Secondary antibody: Mouse HRP secondary antibody. Block: 5% BLOTTO. Predicted/Observed size: 31 kDa with 5 isoforms, 36 kDa for Hax1a.

Disclaimer

This product is for research use only and is not intended for therapeutic or diagnostic applications. Please contact a technical service representative for more information. All products of animal origin manufactured by Rockland Immunochemicals are derived from starting materials of North American origin. Collection was performed in United States Department of Agriculture (USDA) inspected facilities and all materials have been inspected and certified to be free of disease and suitable for exportation. All properties listed are typical characteristics and are not specifications. All suggestions and data are offered in good faith but without guarantee as conditions and methods of use of our products are beyond our control. All claims must be made within 30 days following the date of delivery. The prospective user must determine the suitability of our materials before adopting them on a commercial scale. Suggested uses of our products are not recommendations to use our products in violation of any patent or as a license under any patent of Rockland Immunochemicals, Inc. If you require a commercial license to use this material and do not have one, then return this material, unopened to: Rockland Inc., P.O. BOX 5199, Limerick, Pennsylvania, USA.