

**Datasheet for 200-301-B46****LGR4 Antibody****Overview**

<b>Description:</b>	Anti-LGR4 Monoclonal Antibody (MOUSE) - 200-301-B46
<b>Item No.:</b>	200-301-B46
<b>Size:</b>	1 mg
<b>Applications:</b>	ELISA, WB
<b>Reactivity:</b>	Human, Chimpanzee, Macaque Monkey
<b>Host Species:</b>	Mouse

**Product Details**

<b>Background:</b>	LGR4, also known as leucine-rich repeat-containing G protein-coupled receptor 4, is a G protein-coupled receptors (GPCRs). GPCRs are membrane bound proteins that play key roles in a variety of physiologic functions. Members of the leucine-rich GPCR (LGR) family, such as GPR48, have multiple N-terminal leucine-rich repeats (LRRs) and a 7-transmembrane domain. LGR4 is an orphan GPCR reported to be expressed in steroidogenic tissues such as placenta, ovary, testis, adrenal, pancreas, prostate, and thyroid, as well as in spinal cord, stomach, heart, and kidney.
<b>Synonyms:</b>	mouse anti-LGR4 antibody, mouse anti-LGR 4 antibody, leucine-rich repeat-containing G protein-coupled receptor 4
<b>Host Species:</b>	Mouse
<b>Clonality:</b>	Monoclonal
<b>Clone ID:</b>	6G8.B3.G5.C3
<b>Format:</b>	IgG2b

**Target Details**

<b>Gene Name:</b>	LGR4
<b>Reactivity:</b>	Human, Chimpanzee, Macaque Monkey
<b>Immunogen Type:</b>	Conjugated Peptide

<b>Immunogen:</b>	This LGR4 antibody was produced by repeated immunizations with a synthetic peptide corresponding to an internal region of human LGR4 protein. The hybridoma was produced by fusing BALB/c mouse splenocytes and mouse myeloma SP2/O cells using conventional technology.
<b>Purity/Specificity:</b>	Anti-LGR4 Antibody product was purified from concentrated tissue culture supernate by Protein A chromatography. This antibody is specific for human LGR4 protein. A BLAST analysis was used to suggest cross-reactivity with LGR4 from chimpanzee, orangutan and macaque based on 100% homology with the immunizing sequence. Cross-reactivity with LGR4 from other sources has not been determined.
<b>Relevant Links:</b>	<ul style="list-style-type: none"><li>• <a href="#">NCBI - 157694513</a></li><li>• <a href="#">UniProtKB - Q8N537</a></li><li>• <a href="#">GenelD - 55366</a></li></ul>

## Application Details

<b>Tested Applications:</b>	ELISA, WB
<b>Application Note:</b>	Anti-LGR4 antibody has been tested by ELISA and western blotting, and is suitable in immunohistochemistry. Expect a band approximately 102 kDa in size corresponding to LGR4 protein by western blotting in the appropriate cell lysate or extract. Specific conditions for reactivity should be optimized by the end user. Use formalin-fixed paraffin-embedded sections for immunohistochemistry. No pre-treatment of sample is required.
<b>Assay Dilutions:</b>	All assays should be optimized by the user. Recommended dilutions (if any) may be listed below.
<b>ELISA:</b>	1:20,000 - 1:100,000
<b>IHC:</b>	5 ug/mL
<b>WB:</b>	1:500 - 1:3,000

## Formulation

<b>Physical State:</b>	Liquid (sterile filtered)
<b>Concentration:</b>	1 mg/ml
<b>Buffer:</b>	0.02 M Potassium Phosphate, 0.15 M Sodium Chloride, pH 7.2
<b>Preservative:</b>	0.01% (w/v) Sodium Azide
<b>Stabilizer:</b>	None

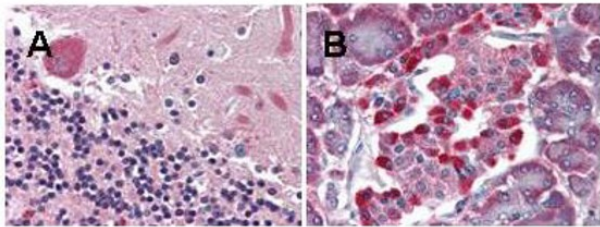
## Shipping & Handling

**Shipping Condition:** Dry Ice

**Storage Condition:** Store Anti-LGR4 Monoclonal Antibody at -20° C prior to opening. Aliquot contents and freeze at -20° C or below for extended storage. Avoid cycles of freezing and thawing. Centrifuge antibody if not completely clear after standing at room temperature. This product is stable for several weeks at 4° C as an undiluted liquid. Dilute only prior to immediate use.

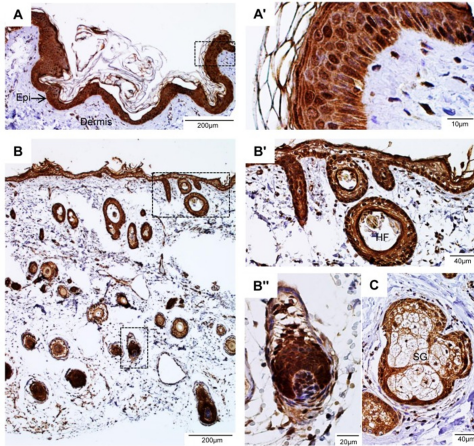
**Expiration:** Expiration date is one (1) year from date of receipt.

## Images



### Immunohistochemistry

Rockland's anti-LGR4 monoclonal antibody was used diluted to 5 µg/ml to detect LGR4 staining at the membrane of cells in various human tissues. A. Brain cerebellum. B. Pancreas islet. Strongly positive staining is noted in subsets of cells within the islets of Langerhans. Moderately positive staining was observed in Purkinje and Golgi neurons of the cerebellum, adrenal medulla, neuroendocrine cells, hepatocytes, lung macrophages, seminiferous tubules and Leydig cells of the testis. Faintly to moderately positive staining was also observed in cardiac myocytes and renal tubules, granulocytes, and subsets of lymphocytes. Some elastin background staining is noted. Tissue was formalin fixed and paraffin embedded. No pre-treatment of sample was required. The image shows the localization of antibody as the precipitated red signal, with a hematoxylin purple nuclear counterstain. Personal communication, Andrew Elston, Lifespan Biosciences, Seattle, WA.

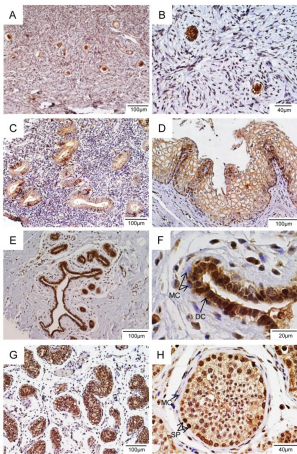


**Immunohistochemistry**

LGR4 is highly expressed in the epidermis and hair follicles of human skin.

A, representative micrograph of a skin section stained with 7E7, Epi – epidermis. The boxed area is enlarged in A'. B, lower magnification of a skin section showing staining of hair follicles. The boxed areas are enlarged in B' and B'', HF – hair follicle. C, staining was shown in the basal layer of sebaceous gland (SG).

Fig 2. PMID: 24205130

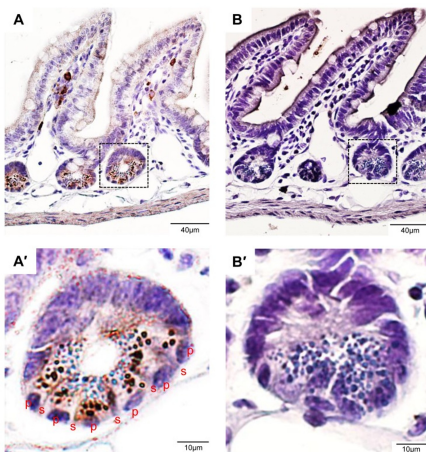


**Immunohistochemistry**

LGR4 is highly expressed in germ cells and epithelial cells in human reproductive organs.

A, ovary, B, primordial follicles of ovary, C, uterine glands, D, stratified squamous epithelium of uterine cervix, E, mammary duct, F, breast intralobular terminal duct, DC – duct cells, MC – myoepithelial cells, G, testis, H, seminiferous tube of testis, SP – spermatogonia, MC – myoid cells. Fig 3.

PMID: 24205130

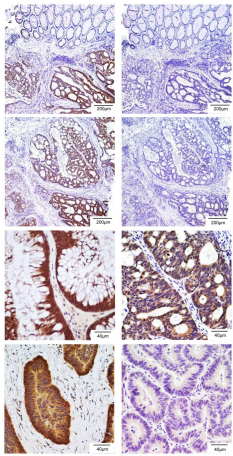


**Immunohistochemistry**

LGR4 is strongly expressed in the Paneth cells in mouse intestine.

A, an ileum section stained with the antibody 5A3. B, an adjacent section stained with normal rat IgG. A' and B', enlarged view of the boxed area in A and B, respectively. P – Paneth cells, s – stem cells. Fig 4.

PMID: 24205130

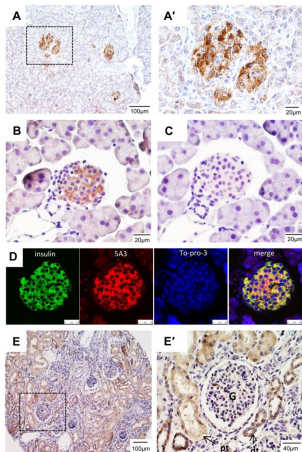


### Immunohistochemistry

LGR4 is overexpressed in a significant fraction of human colon cancers.

A and C, Staining of two colon tumor samples with 7E7. Specific and strong staining on colon tumor epithelial layers was clearly notable. B and D, Staining of adjacent sections of A and C, respectively, with 7E7 preincubated with human LGR4-ECD. The signal was blocked by incubation with LGR4-ECD. E-G, Three representatives of colon tumors with strong LGR4-IR. H, One representative of colon tumors with no expression of LGR4. Figure 5.

PMID: 24205130

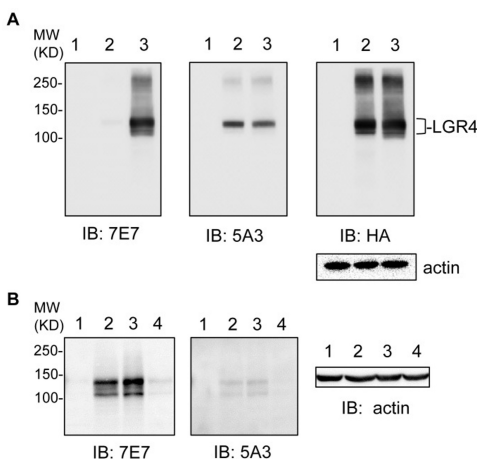


### Immunohistochemistry

Expression of LGR4 in the pancreas and kidney.

A, Staining of human pancreas with 7E7. A', Enlarged view of the area boxed in A. B, Staining of mouse pancreas with 5A3. C, Staining of an adjacent section of B with normal rat IgG as negative control. D, Co-staining of mouse pancreas with 5A3 and insulin antibody. E, Staining of human kidney, E', an enlarged view of the boxed area in E. G – glomerulus, pt – proximal convoluted tubule, dt – distal convoluted tubule. Fig 6.

PMID: 24205130



### Western Blot

Recombinant and endogenous LGR4 were detected with custom generated rat monoclonal antibodies.

A, Western blot of HEK293T transfected with vector (1), mouse LGR4 tagged with HA (2), or human LGR4 tagged with HA (3) using antibodies 7E7 (left panel), 5A3 (mid panel), and anti-HA (right panel). B, Western blot of LGR4 using 7E7 (left panel) and 5A3 (mid panel) on human colon tumor cell lines HCT116 (1), parental HT29 (2), vector-infected HT29 (3) and LGR4-shRNA infected HT29 (4). Actin was used as loading control. Fig 1. PMID: 24205130

## Disclaimer

This product is for research use only and is not intended for therapeutic or diagnostic applications. Please contact a technical service representative for more information. All products of animal origin manufactured by Rockland Immunochemicals are derived from starting materials of North American origin. Collection was performed in United States Department of Agriculture (USDA) inspected facilities and all materials have been inspected and certified to be free of disease and suitable for exportation. All properties listed are typical characteristics and are not specifications. All suggestions and data are offered in good faith but without guarantee as conditions and methods of use of our products are beyond our control. All claims must be made within 30 days following the date of delivery. The prospective user must determine the suitability of our materials before adopting them on a commercial scale. Suggested uses of our products are not recommendations to use our products in violation of any patent or as a license under any patent of Rockland Immunochemicals, Inc. If you require a commercial license to use this material and do not have one, then return this material, unopened to: Rockland Inc., P.O. BOX 5199, Limerick, Pennsylvania, USA.