

Datasheet for 200-301-901**CENP-E****Overview**

Description:	Anti-CENP-E (MOUSE) Monoclonal Antibody - 200-301-901
Item No.:	200-301-901
Size:	100 µg
Applications:	IF, IP, WB
Reactivity:	Human
Host Species:	Mouse

Product Details

Background:	CENP-E, Centrosome-associated protein E, is a kinesin-like minus-end directed microtubule motor protein that accumulates in the G ₂ phase of the cell cycle. Unlike other centrosome-associated proteins, it is not present during interphase and first appears at the centromere region of chromosomes during prometaphase. CENP-E is proposed to be one of the motors responsible for mammalian chromosome movement and/or spindle elongation. CENP-E interacts with CENP-F and BUBR1 kinase. CENP-E associates with kinetochores during congression, relocates to the spindle midzone at anaphase, and is quantitatively discarded at the end of the cell division.
Synonyms:	mouse anti-CENP-E antibody, Centromere-associated protein E, Centromeric protein E antibody, KIF10 antibody, Kinesin-7, Kinesin family member 10 antibody, Kinesin-related protein CENPE
Host Species:	Mouse
Clonality:	Monoclonal
Clone ID:	1H12
Format:	IgG1

Target Details

Gene Name:	CENPE
Reactivity:	Human
Immunogen Type:	Recombinant Protein

Immunogen:	This protein A purified monoclonal antibody was produced by repeated immunizations with a full length recombinant protein corresponding to human CENP-E protein.
Purity/Specificity:	This Protein A purified antibody is directed against human CENP-E protein. The product was purified from tissue culture supernatant by chromatography. This antibody reacts with CENP-E from human cells. Reactivity against homologues from other sources is not known.
Relevant Links:	<ul style="list-style-type: none">• NCBI - CAA78727.1• UniProtKB - Q02224• GeneID - 1062

Application Details

Tested Applications:	IF, IP, WB
Application Note:	This protein A purified antibody has been tested for use in immunoprecipitation, immunofluorescence staining and western blot and is capable of detecting endogenous protein. Specific conditions for reactivity should be optimized by the end user. Expect a predominant band at ~ 320 kDa corresponding to full-length protein by western blotting in the appropriate cell lysate or extract.
Assay Dilutions:	All assays should be optimized by the user. Recommended dilutions (if any) may be listed below.
ELISA:	1:5,000 - 1:20,000
IF:	1:500 - 1:2,000
IP:	1:200
WB:	1:500 - 1:2,000

Formulation

Physical State:	Liquid (sterile filtered)
Concentration:	1.0 mg/mL by UV absorbance at 280 nm
Buffer:	0.02 M Potassium Phosphate, 0.15 M Sodium Chloride, pH 7.2
Preservative:	0.01% (w/v) Sodium Azide
Stabilizer:	None

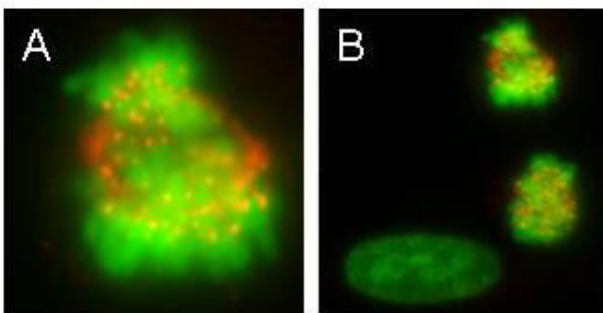
Shipping & Handling

Shipping Condition:	Dry Ice
----------------------------	---------

Storage Condition: Store vial at -20° C prior to opening. Aliquot contents and freeze at -20° C or below for extended storage. Avoid cycles of freezing and thawing. Centrifuge product if not completely clear after standing at room temperature. This product is stable for several weeks at 4° C as an undiluted liquid. Dilute only prior to immediate use.

Expiration: Expiration date is one (1) year from date of receipt.

Images



Immunofluorescence Microscopy

Rockland's monoclonal anti-CENPE antibody was used to detect CENPE protein, visible as discrete nuclear dots on prometaphase and metaphase cells that relocate to the spindle midzone at anaphase (panel A). Interphase cells show no discrete staining (bottom left, panel B). HeLa cells were fixed in paraformaldehyde and stained using this primary antibody. AlexaFluor 555 TM conjugated anti-Mouse antibody (red) was used for detection. DNA was stained using bis-benzimide (DAPI) (green). Personal Communication, Tim Yen, Fox Chase Cancer Center, Philadelphia, PA.

Disclaimer

This product is for research use only and is not intended for therapeutic or diagnostic applications. Please contact a technical service representative for more information. All products of animal origin manufactured by Rockland Immunochemicals are derived from starting materials of North American origin. Collection was performed in United States Department of Agriculture (USDA) inspected facilities and all materials have been inspected and certified to be free of disease and suitable for exportation. All properties listed are typical characteristics and are not specifications. All suggestions and data are offered in good faith but without guarantee as conditions and methods of use of our products are beyond our control. All claims must be made within 30 days following the date of delivery. The prospective user must determine the suitability of our materials before adopting them on a commercial scale. Suggested uses of our products are not recommendations to use our products in violation of any patent or as a license under any patent of Rockland Immunochemicals, Inc. If you require a commercial license to use this material and do not have one, then return this material, unopened to: Rockland Inc., P.O. BOX 5199, Limerick, Pennsylvania, USA.