

**Datasheet for 200-301-390****Keratin Antibody****Overview**

<b>Description:</b>	Anti-Keratin (MOUSE) Monoclonal Antibody - 200-301-390
<b>Item No.:</b>	200-301-390
<b>Size:</b>	100 µg
<b>Applications:</b>	ELISA, IF, IHC, Multiplex, WB
<b>Reactivity:</b>	Human
<b>Host Species:</b>	Mouse

**Product Details**

<b>Background:</b>	Keratins are intermediate filament proteins responsible for the structural integrity of epithelial cells and are subdivided into epithelial keratins and hair keratins. There are two types of keratins (cytoskeletal and microfibrillar) and are clustered in a region of chromosome. Cytokeratins (CK) are intermediate filaments of epithelial cells, both in keratinizing tissue (i.e. skin) and non-keratinizing cells (i.e. mesothelial). Anti-Keratin Antibody is useful for researchers interested in cytoskeletal signaling and developmental biology research.
<b>Synonyms:</b>	mouse anti-keratin antibody, mouse anti-cytokeratin 6 antibody, PC2 antibody, Type II keratin isoform K6c antibody
<b>Host Species:</b>	Mouse
<b>Clonality:</b>	Monoclonal
<b>Clone ID:</b>	C11
<b>Format:</b>	IgG1

**Target Details**

<b>Gene Name:</b>	KRT6C
<b>Reactivity:</b>	Human
<b>Immunogen Type:</b>	Native Protein
<b>Immunogen:</b>	This protein A purified monoclonal antibody was produced by repeated immunizations with purified human cytoskeletal preparations from A431 cells.

**Purity/Specificity:** This protein A purified mouse monoclonal antibody reacts specifically with keratins from human tissues and derived cell lines. This antibody reacts with keratin (56 kDa), keratin 17 (46 kDa), keratin 18 (45 kDa) and keratin 19 (40 kDa) derived from humans. Cross reactivity with keratins from other sources has not been determined. No reaction is expected against other filament proteins including vimentin, desmin and neurofilament protein.

**Relevant Links:**

- [UniProtKB - P48668](#)
- [NCBI - P48668.3](#)
- [GeneID - 286887](#)

## Application Details

**Tested Applications:** ELISA, IF, IHC, Multiplex, WB

**Application Note:** Anti-Keratin Antibody has been tested in ELISA, immunohistochemistry, immunofluorescence, immunoblotting and immunoprecipitation. For a positive control use skin, colon carcinoma and squamous granulocyte carcinoma cells.

**Assay Dilutions:** All assays should be optimized by the user. Recommended dilutions (if any) may be listed below.

**ELISA:** 1:5,000 - 1:20,000

**IF:** 1:50 - 1:200

**IHC:** 1:50 - 1:200

**IP:** 1:100

**WB:** 1:50 - 1:200

## Formulation

**Physical State:** Liquid (sterile filtered)

**Concentration:** 0.929 mg/mL by UV absorbance at 280 nm

**Buffer:** 0.02 M Potassium Phosphate, 0.15 M Sodium Chloride, pH 7.2

**Preservative:** 0.01% (w/v) Sodium Azide

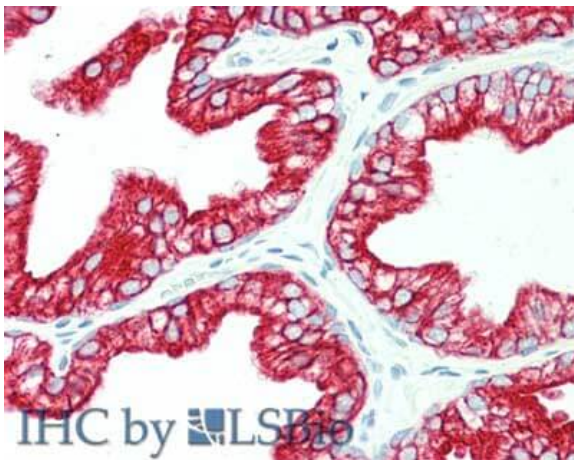
**Stabilizer:** None

## Shipping & Handling

**Shipping Condition:** Dry Ice

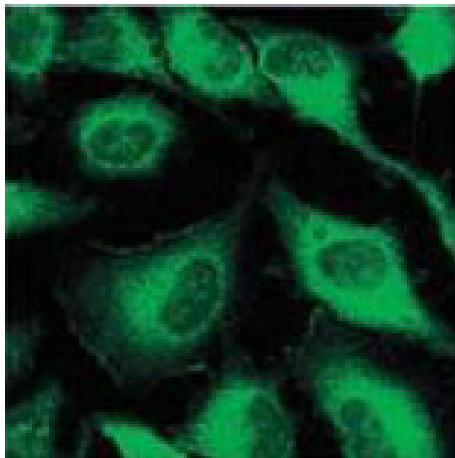
<b>Storage Condition:</b>	Store vial at -20° C prior to opening. Aliquot contents and freeze at -20° C or below for extended storage. Avoid cycles of freezing and thawing. Centrifuge product if not completely clear after standing at room temperature. This product is stable for several weeks at 4° C as an undiluted liquid. Dilute only prior to immediate use.
<b>Expiration:</b>	Expiration date is one (1) year from date of receipt.

## Images



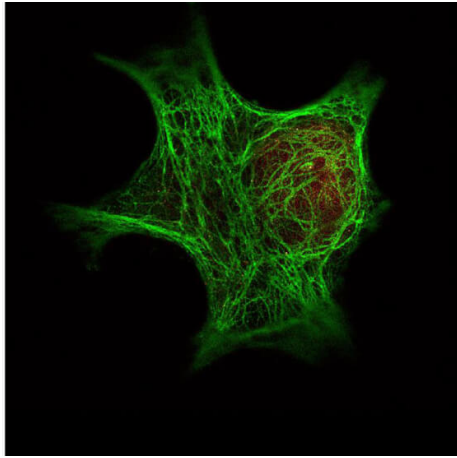
### Immunohistochemistry

Immunohistochemistry of Mouse anti-Keratin antibody.  
Tissue: human prostate. Fixation: formalin fixed paraffin embedded. Antigen retrieval: not required. Primary antibody: anti-Keratin antibody at 10 µg/mL for 1 h at RT. Secondary antibody: Peroxidase mouse secondary antibody at 1:10,000 for 45 min at RT. Staining: Keratin as precipitated red signal with hematoxylin purple nuclear counterstain.



### Immunofluorescence Microscopy

Immunofluorescence using ROCKLAND Immunochemical's Mouse Anti-Keratin antibody. Confocal slices of HeLa cells are between 0.5 and 0.6 µm where the image is taken near the bottom of the cell. Use FITC conjugated Goat-a-Mouse IgG [H&L] (p/n 610-102-121) at 1:2,000 dilution for detection.



### Immunofluorescence Microscopy

Immunofluorescence Microscopy of Rockland Immunochemical's Anti-Keratin antibody (p/n 200-301-390) was used with Rockland's DyLight™ 488 goat anti-mouse (p/n 610-141-121) [shown in green] to detect Keratin by Immunofluorescence. In the same experiment, Rockland's polyclonal Anti-HDAC-1 antibody (p/n 600-401-879) was used with Atto425 Anti-Rabbit IgG (p/n 611-151-122) [shown in red] to detect HDAC-1. Data was collected on a STED-CW TCS-SP5 Confocal system (Leica Microsystems) equipped with a DFC 350FX camera allowing sequential acquisition in wide-field, confocal and STED CW imaging modes and provided courtesy of: Myriam Gastard, PhD, personal communication, Leica Microsystems, Inc. USA



### Western Blot

Western blot using ROCKLAND Immunochemical's Mouse Anti-Keratin antibody. This antibody recognizes a single 56kDa band corresponding to human keratin as confirmed by the position of molecular weight markers (not shown). Approximately 100ng of keratin from human epidermis was applied under reducing conditions to a pre-cast 4-20% iGel from Gradipore Inc. A 1:400 dilution of Mab anti-Keratin was used for 2h followed by detection using a 1:5,000 dilution of IRDye™800 conjugated Goat-a-Mouse IgG [H&L] (p/n 610-132-121) and visualization using the Odyssey® Infrared Imaging System developed by LI-COR. Other detection systems will yield similar results. IRDye is a trademark of LI-COR, Inc.

## Disclaimer

This product is for research use only and is not intended for therapeutic or diagnostic applications. Please contact a technical service representative for more information. All products of animal origin manufactured by Rockland Immunochemicals are derived from starting materials of North American origin. Collection was performed in United States Department of Agriculture (USDA) inspected facilities and all materials have been inspected and certified to be free of disease and suitable for exportation. All properties listed are typical characteristics and are not specifications. All suggestions and data are offered in good faith but without guarantee as conditions and methods of use of our products are beyond our control. All claims must be made within 30 days following the date of delivery. The prospective user must determine the suitability of our materials before adopting them on a commercial scale. Suggested uses of our products are not recommendations to use our products in violation of any patent or as a license under any patent of Rockland Immunochemicals, Inc. If you require a commercial license to use this material and do not have one, then return this material, unopened to: Rockland Inc., P.O. BOX 5199, Limerick, Pennsylvania, USA.