

## Datasheet for 200-1678

**Anti-Pyruvate Kinase Antibody Biotin Conjugated****Overview**

<b>Description:</b>	Anti-Pyruvate Kinase (Rabbit Muscle) (GOAT) Antibody Biotin Conjugated (BULK ORDER) - 200-1678
<b>Item No.:</b>	200-1678
<b>Size:</b>	10 mg
<b>Applications:</b>	WB
<b>Reactivity:</b>	Rabbit
<b>Host Species:</b>	Goat

**Product Details**

<b>Background:</b>	Pyruvate Kinase is an enzyme that is key in the glycolytic process. Pyruvate Kinase's specific activity is to catalyze the transfer of a phosphate group from phosphoenolpyruvate to ADP, yielding one molecule of pyruvate and one molecule of ATP. A isoenzyme of Pyruvate Kinase, known as the M2, is a key area of study in tumorigenesis, as the M2 isoenzyme seems to elevate aerobic glycolysis in tumor cells, leading to tumor proliferation. Conflicting evidence as to the importance of this isoenzyme in tumor growth establishes this as a large area of exploration and study. Anti-Pyruvate Kinase Antibody is ideal for investigators in Cancer, Cell Biology, and Signal Transduction research.
<b>Synonyms:</b>	goat anti-Pyruvate Kinase Antibody, biotin Conjugated goat anti-Pyruvate Kinase Antibody, Pyruvate kinase isozymes M1/M2 antibody, Pyruvate kinase muscle isozyme antibody, Pyruvate kinase 2/3 antibody, Cytosolic thyroid hormone-binding protein antibody, PKM2
<b>Host Species:</b>	Goat
<b>Conjugate:</b>	Biotin
<b>Clonality:</b>	Polyclonal
<b>Format:</b>	IgG

**Target Details**

<b>Gene Name:</b>	PKM
<b>Reactivity:</b>	Rabbit

<b>Immunogen Type:</b>	Native Protein
<b>Immunogen:</b>	Pyruvate Kinase [Rabbit Muscle]
<b>Purity/Specificity:</b>	Anti-Pyruvate Kinase Antibody is an IgG fraction antibody purified from monospecific antiserum by a multi-step process which includes delipidation, salt fractionation and ion exchange chromatography followed by extensive dialysis against the buffer stated above. Assay by immunoelectrophoresis resulted in a single precipitin arc against anti-Biotin, anti-Goat Serum as well as purified and partially purified Pyruvate Kinase [Rabbit Muscle]. Anti-Pyruvate Kinase has been reported to react with all forms of pyruvate kinase (pan M-PK). Cross reactivity against Pyruvate Kinase from other sources may occur but have not been specifically determined.
<b>Relevant Links:</b>	<ul style="list-style-type: none"><li>• <a href="#">UniProtKB - P11974</a></li><li>• <a href="#">NCBI - NP_001182574.1</a></li><li>• <a href="#">GeneID - 100008676</a></li></ul>

## Application Details

<b>Tested Applications:</b>	WB
<b>Application Note:</b>	Anti-Pyruvate Kinase Biotin Antibody has been tested by western blot and is suitable to be assayed against 1.0 ug of Pyruvate Kinase in a standard capture ELISA using Peroxidase Conjugated Streptavidin #S000-03 and ABTS (2,2'-azino-bis-[3-ethylbentiazoline-6-sulfonic acid]) code # ABTS-100 as a substrate for 30 minutes at room temperature. A working dilution of 1:3,000 to 1:15,000 of the reconstitution concentration is suggested for Anti-Pyruvate Kinase Antibody.
<b>Assay Dilutions:</b>	All assays should be optimized by the user. Recommended dilutions (if any) may be listed below.
<b>ELISA:</b>	1:4,000 - 1:20,000
<b>WB:</b>	1:500 - 1:2,000

## Formulation

<b>Physical State:</b>	Lyophilized
<b>Concentration:</b>	10.0 mg/mL by UV absorbance at 280 nm
<b>Buffer:</b>	0.02 M Potassium Phosphate, 0.15 M Sodium Chloride, pH 7.2
<b>Preservative:</b>	0.01% (w/v) Sodium Azide
<b>Stabilizer:</b>	10 mg/mL Bovine Serum Albumin (BSA) - Immunoglobulin and Protease free
<b>Reconstitution Volume:</b>	1.0 mL
<b>Reconstitution Buffer:</b>	Restore with deionized water (or equivalent)

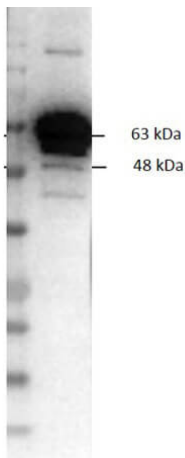
## Shipping & Handling

**Shipping Condition:** Ambient

**Storage Condition:** Store vial at 4° C prior to restoration. For extended storage aliquot contents and freeze at -20° C or below. Avoid cycles of freezing and thawing. Centrifuge product if not completely clear after standing at room temperature. This product is stable for several weeks at 4° C as an undiluted liquid. Dilute only prior to immediate use.

**Expiration:** Expiration date is one (1) year from date of receipt.

## Images



### Western Blot

Western Blot of Goat Anti-Pyruvate Kinase Biotin Conjugate. Lane 1: Opal Prestain Molecular Weight Marker. Lane 2: 50ng of Pyruvate Kinase. Primary Antibody: Goat Anti-Pyruvate Kinase Biotin at 1ug/mL o/n @ 4C. Secondary Antibody: Streptavidin-HRP: S000-03 at 1:40,000 for 30 min at RT. Blocking: MB-070 for 30 min at RT.

## Disclaimer

This product is for research use only and is not intended for therapeutic or diagnostic applications. Please contact a technical service representative for more information. All products of animal origin manufactured by Rockland Immunochemicals are derived from starting materials of North American origin. Collection was performed in United States Department of Agriculture (USDA) inspected facilities and all materials have been inspected and certified to be free of disease and suitable for exportation. All properties listed are typical characteristics and are not specifications. All suggestions and data are offered in good faith but without guarantee as conditions and methods of use of our products are beyond our control. All claims must be made within 30 days following the date of delivery. The prospective user must determine the suitability of our materials before adopting them on a commercial scale. Suggested uses of our products are not recommendations to use our products in violation of any patent or as a license under any patent of Rockland Immunochemicals, Inc. If you require a commercial license to use this material and do not have one, then return this material, unopened to: Rockland Inc., P.O. BOX 5199, Limerick, Pennsylvania, USA.