

## Datasheet for 200-1176

# Pepsin Antibody

### Overview

<b>Description:</b>	Anti-Pepsin (GOAT) Antibody (BULK ORDER) - 200-1176
<b>Item No.:</b>	200-1176
<b>Size:</b>	50 mg
<b>Applications:</b>	ELISA, IHC, WB
<b>Reactivity:</b>	Pig
<b>Host Species:</b>	Goat

### Product Details

<b>Background:</b>	Pepsin antibody detects Pepsin protein. Pepsin is an enzyme whose pepsinogen is released by the chief cells in the stomach and degrades food proteins into peptides. Pepsin belongs to the peptidase A1 family and is one of three principal proteolytic enzymes in the digestive system. Pepsin is most efficient in cleaving peptide bonds between hydrophobic and preferably aromatic amino acids such as phenylalanine, tryptophan, and tyrosine at positions P1 and P1'. Anti-Pepsin Antibody is ideal for investigators involved in Cell Signaling and Cell Biology research.
<b>Synonyms:</b>	goat anti-Pepsin Antibody, Pepsin A antibody, Pepsin a precursor antibody, Pepsin antibody, Pepsinogen 1 second locus antibody, Pepsinogen 3 group 1 antibody, Pepsinogen a3 antibody
<b>Host Species:</b>	Goat
<b>Clonality:</b>	Polyclonal
<b>Format:</b>	IgG

### Target Details

<b>Gene Name:</b>	PGA
<b>Reactivity:</b>	Pig
<b>Immunogen Type:</b>	Native Protein
<b>Immunogen:</b>	Anti-Pepsin Antibody was produced by repeated immunizations with pork Pepsin protein isolated from swine stomach.

**Purity/Specificity:** Anti-PEPSIN is an IgG fraction antibody purified from monospecific antiserum by a multi-step process which includes delipidation, salt fractionation and ion exchange chromatography followed by extensive dialysis against the buffer stated above. Assay by immunoelectrophoresis resulted in a single precipitin arc against anti-Goat Serum as well as purified and partially purified Pepsin [Porcine Stomach]. Cross reactivity against Pepsin from other tissues and species may occur but have not been specifically determined.

**Relevant Links:**

- [UniProtKB - P00791](#)
- [NCBI - AAA31095.1](#)
- [GeneID - 396892](#)

## Application Details

**Tested Applications:** ELISA, IHC, WB

**Application Note:** Anti-Pepsin antibody has been tested in ELISA, western blot and immunohistochemistry. This product detects a single band of the expected apparent molecular weight and for ELISA. Researchers should determine optimal titers for applications that are not stated below.

**Assay Dilutions:** All assays should be optimized by the user. Recommended dilutions (if any) may be listed below.

**ELISA:** 1:50,000 - 1:200,000

**IHC:** 1:2,000 - 1:10,000

**IP:** 1:100

**WB:** 1:5,000 - 1:20,000

## Formulation

**Physical State:** Lyophilized

**Concentration:** 10.0 mg/mL by UV absorbance at 280 nm

**Buffer:** 0.02 M Potassium Phosphate, 0.15 M Sodium Chloride, pH 7.2

**Preservative:** 0.01% (w/v) Sodium Azide

**Stabilizer:** None

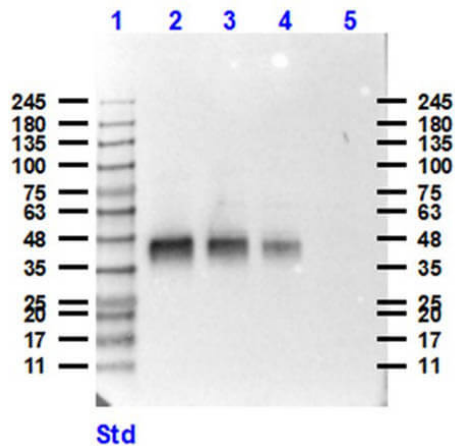
**Reconstitution Volume:** 5.0 mL

**Reconstitution Buffer:** Restore with deionized water (or equivalent)

## Shipping & Handling

<b>Shipping Condition:</b>	Ambient
<b>Storage Condition:</b>	Store vial at 4° C prior to restoration. For extended storage aliquot contents and freeze at -20° C or below. Avoid cycles of freezing and thawing. Centrifuge product if not completely clear after standing at room temperature. This product is stable for several weeks at 4° C as an undiluted liquid. Dilute only prior to immediate use.
<b>Expiration:</b>	Expiration date is one (1) year from date of receipt.

## Images

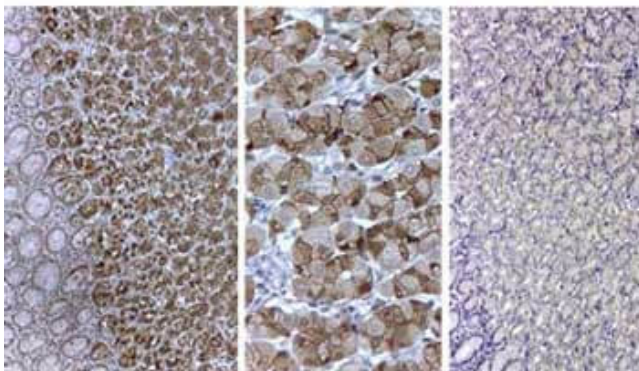


### Western Blot

Western Blot of Anti-Pepsin Antibody. Lane 1: Opal Prestained Molecular Weight Ladder (p/n MB-210-0500). Lane 2: HeLa Lysate (10 $\mu$ g) + Pepsin (0.1 $\mu$ g) [+]. Lane 3: HeLa Lysate (10 $\mu$ g) + Pepsin (0.05 $\mu$ g) [+]. Lane 4: HeLa Lysate (10 $\mu$ g) + Pepsin (0.02 $\mu$ g) [+]. Lane 5: HeLa Lysate (p/n W09-000-364) (10 $\mu$ g) [-]. Primary Antibody: Anti-Pepsin at 1 $\mu$ g/mL overnight at 2-8°C. Secondary Antibody: Donkey Anti-Goat IgG HRP at 1:40,000 at RT for 30 minutes. Block: BlockOut Buffer (p/n MB-073). Exposure: 15 sec. Predicted MW: ~41kDa. Observed MW: ~45kDa.

### Immunohistochemistry

Immunohistochemistry of goat anti-pepsin antibody at 1:100.



## Disclaimer

This product is for research use only and is not intended for therapeutic or diagnostic applications. Please contact a technical service representative for more information. All products of animal origin manufactured by Rockland Immunochemicals are derived from starting materials of North American origin. Collection was performed in United States Department of Agriculture (USDA) inspected facilities and all materials have been inspected and certified to be free of disease and suitable for exportation. All properties listed are typical characteristics and are not specifications. All suggestions and data are offered in good faith but without guarantee as conditions and methods of use of our products are beyond our control. All claims must be made within 30 days following the date of delivery. The prospective user must determine the suitability of our materials before adopting them on a commercial scale. Suggested uses of our products are not recommendations to use our products in violation of any patent or as a license under any patent of Rockland Immunochemicals, Inc. If you require a commercial license to use this material and do not have one, then return this material, unopened to: Rockland Inc., P.O. BOX 5199, Limerick, Pennsylvania, USA.