

## Datasheet for 200-109-077

**Protein A Antibody Texas Red™ Conjugated****Overview**

<b>Description:</b>	Anti-Protein A (GOAT) Antibody Texas Red™ Conjugated - 200-109-077
<b>Item No.:</b>	200-109-077
<b>Size:</b>	100 µg
<b>Reactivity:</b>	Protein A
<b>Host Species:</b>	Goat

**Product Details**

<b>Background:</b>	Protein A is a cell wall protein originating from the bacterium <i>Staphylococcus aureus</i> . Protein A binds to immunoglobulins through interaction with the IgG heavy chain within the Fc region. Affinity to Fc may vary depending on IgG species origins or subclasses. Protein A is predicted 42kDa based on sedimentation data and observed to run ~55-56kDa on SDS-Page.
<b>Synonyms:</b>	goat anti-Protein A Antibody, Texas Red™ Conjugated goat anti-Protein A Antibody, Protein A Texas Red™, Texas Red™, Protein A Texas Red™ Antibody
<b>Host Species:</b>	Goat
<b>Conjugate:</b>	Texas Red®
<b>Clonality:</b>	Polyclonal
<b>Format:</b>	IgG
<b>F/P Ratio:</b>	1.89

**Target Details**

<b>Reactivity:</b>	Protein A
<b>Immunogen Type:</b>	Native Protein
<b>Immunogen:</b>	Protein A [ <i>Staphylococcus aureus</i> ]

**Purity/Specificity:** Anti-Protein A is an IgG fraction antibody purified from monospecific antiserum by a multi-step process which includes delipidation, salt fractionation and ion exchange chromatography followed by extensive dialysis against the buffer stated above. Assay by immunoelectrophoresis resulted in a single precipitin arc against purified and partially purified Protein A [*Staphylococcus aureus*], anti-Goat IgG and anti-Goat Serum. Cross reactivity against Protein A from other sources is unknown.

## Application Details

**Application Note:** Anti-Protein A Texas Red Conjugated Antibody is suitable for immunomicroscopy and flow cytometry or FACS analysis as well as other antibody based fluorescent assays requiring lot-to-lot consistency.

**Assay Dilutions:** All assays should be optimized by the user. Recommended dilutions (if any) may be listed below.

**FC:** User Optimized

**IF:** 1:500 - 1:2,500

## Formulation

**Physical State:** Lyophilized

**Concentration:** 1.0 mg/mL by UV absorbance at 280 nm

**Buffer:** 0.02 M Potassium Phosphate, 0.15 M Sodium Chloride, pH 7.2

**Preservative:** 0.01% (w/v) Sodium Azide

**Stabilizer:** 10 mg/mL Bovine Serum Albumin (BSA) - Immunoglobulin and Protease free

**Reconstitution Volume:** 100 µL

**Reconstitution Buffer:** Restore with deionized water (or equivalent)

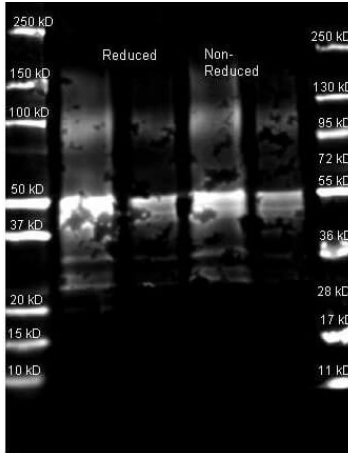
## Shipping & Handling

**Shipping Condition:** Ambient

**Storage Condition:** Store vial at 4° C prior to restoration. For extended storage aliquot contents and freeze at -20° C or below. Avoid cycles of freezing and thawing. Centrifuge product if not completely clear after standing at room temperature. This product is stable for several weeks at 4° C as an undiluted liquid. Dilute only prior to immediate use.

**Expiration:** Expiration date is one (1) year from date of receipt.

## Images



### Western Blot

Western Blot of Goat anti-Protein A Antibody. Lane 1: Protein A Reduced. Lane 2: Protein A Reduced. Lane 3: Protein A Non-Reduced. Lane 4: Protein A Non-Reduced. Load: Lane 1 and 3 - 1.0  $\mu$ g per lane, Lane 2 and 4 - 0.25  $\mu$ g per lane. Primary antibody: Protein A antibody at 1:5,000 for overnight at 4°C. Secondary antibody: DyLight™ 649 goat secondary antibody at 1:10,000 for 90 min at RT. Block: 5% BLOTTO overnight at 4°C. Predicted/Observed size: ~42kDa/~50 kDa for Protein A. Other band(s): Protein A splice variants and isoforms.

## Disclaimer

This product is for research use only and is not intended for therapeutic or diagnostic applications. Please contact a technical service representative for more information. All products of animal origin manufactured by Rockland Immunochemicals are derived from starting materials of North American origin. Collection was performed in United States Department of Agriculture (USDA) inspected facilities and all materials have been inspected and certified to be free of disease and suitable for exportation. All properties listed are typical characteristics and are not specifications. All suggestions and data are offered in good faith but without guarantee as conditions and methods of use of our products are beyond our control. All claims must be made within 30 days following the date of delivery. The prospective user must determine the suitability of our materials before adopting them on a commercial scale. Suggested uses of our products are not recommendations to use our products in violation of any patent or as a license under any patent of Rockland Immunochemicals, Inc. If you require a commercial license to use this material and do not have one, then return this material, unopened to: Rockland Inc., P.O. BOX 5199, Limerick, Pennsylvania, USA.